

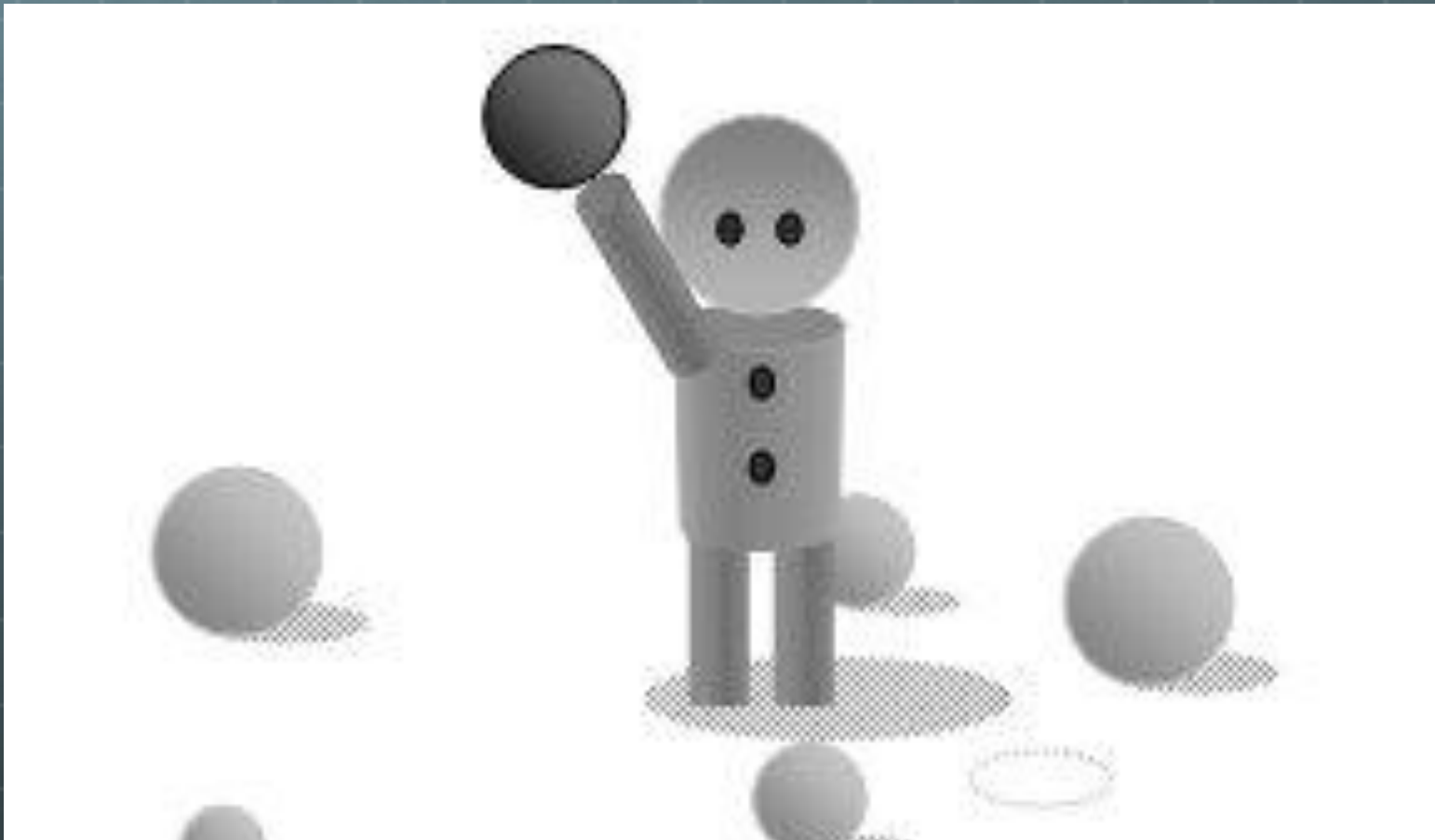
# New Vocabulary

# The cavity process

- (кариозный процесс)



*For instance=for*  
*example*



# gobs

- (уйма)



# To expand

- (расширять)

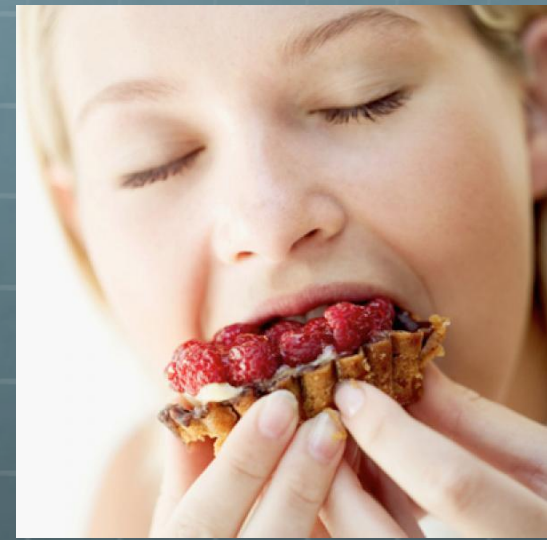


EXPAND

**Celebrates CES Sweepstakes**

# To indulge

- (предаваться чему-либо)



# Gatorade (напиток)



# Candy “Life Saver”



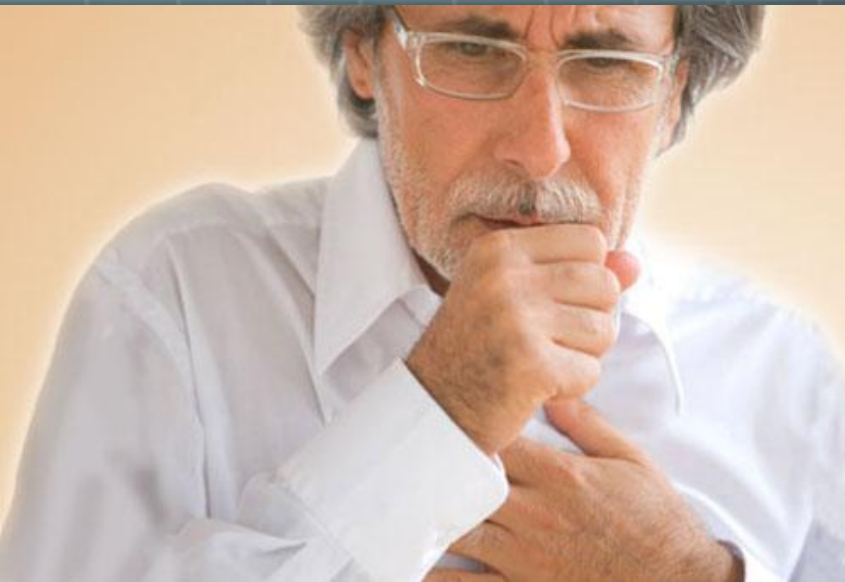


# Jolly Rancher



# *Manifestation of symptoms*

- (проявление симптомов)



# Without further ado

- (без дальнейшего промедления)

without further

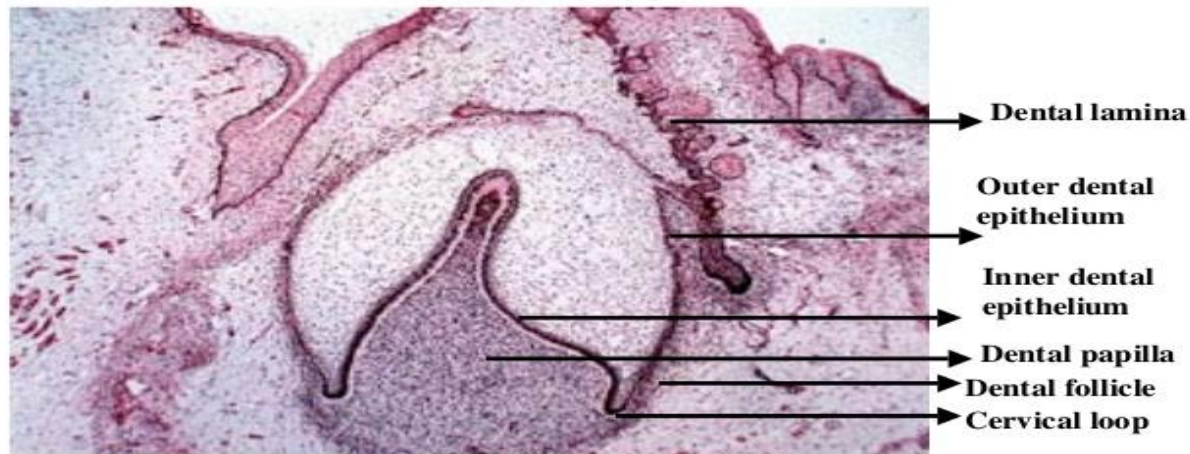
ado

# follicle

- (фолликул)

## 3. Bell Stage

<http://www.usc.edu/hsc/dental/ohisto/>



- Continued growth leads to bell stage, where the enamel organ resembles a bell with deepening of the epithelium over the dental papilla
- Continuation of histodifferentiation (ameloblasts and odontoblasts are defined) and beginning of morphodifferentiation (tooth crown assumes its final shape)

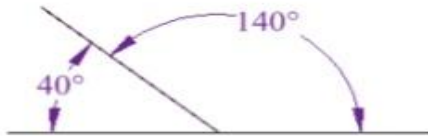
# adjacent

- (смежный, соседний, примыкающий)

## Adjacent or Not Adjacent?

### Adjacent

Why?



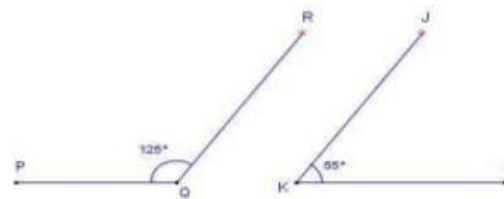
Names:

Supplementary Angles

Adjacent Angles

### Not Adjacent

Why?



Names:

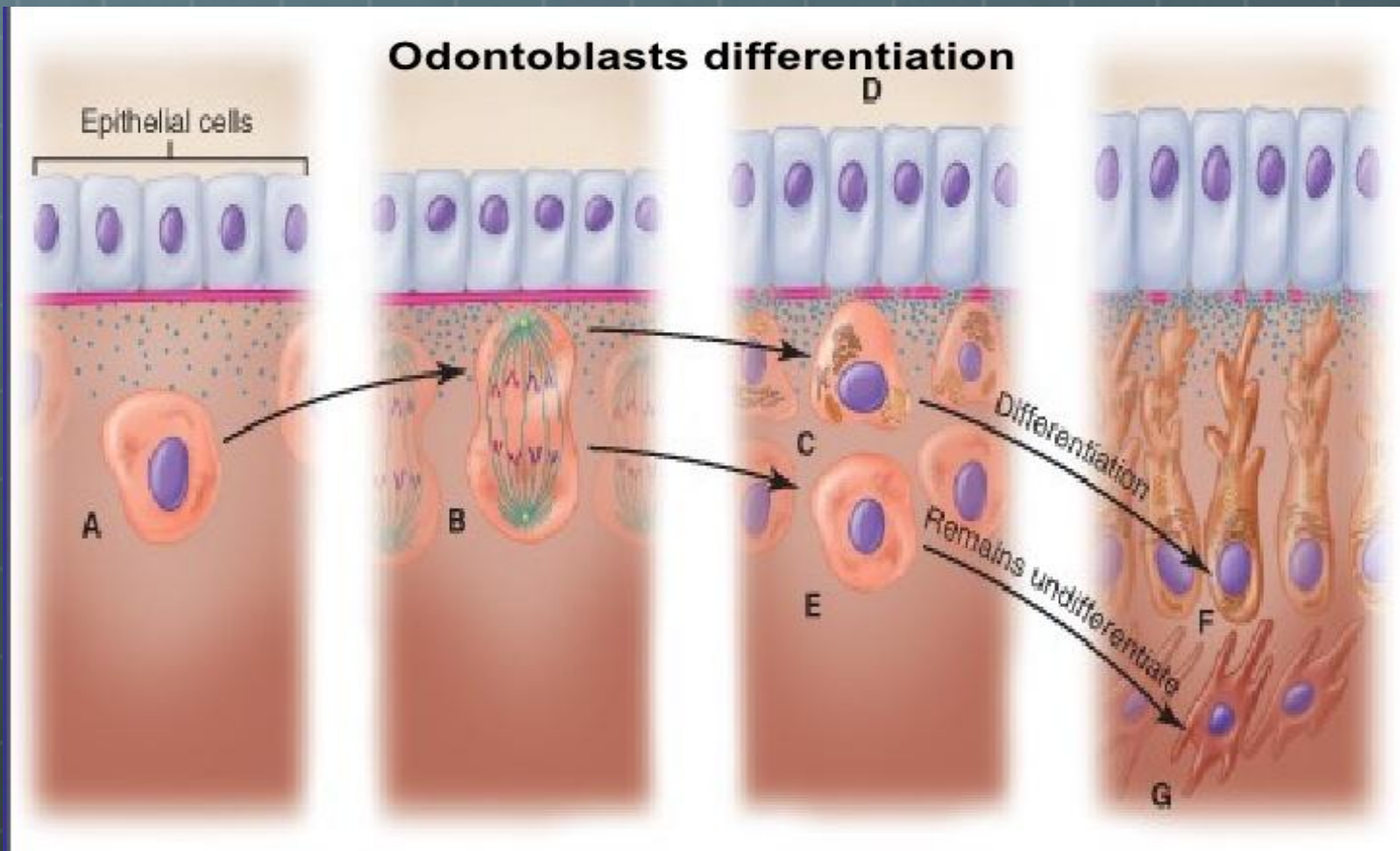
Supplementary Angles

Angle PQR

Angle JKL

# Dentinogenesis

- (дентиногенез)



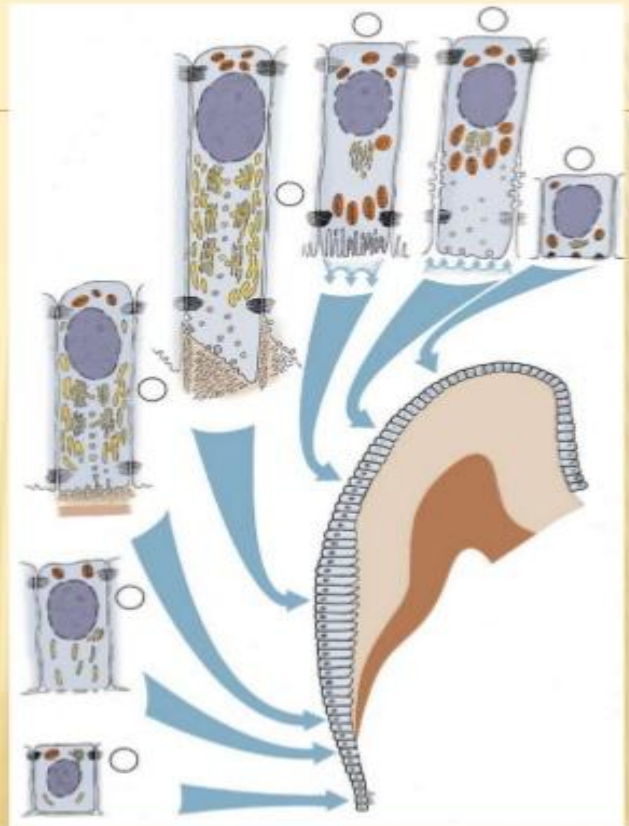
# Amelogenesis

- (Амелогенез)

## AMELOGENESIS

**Schematic representation of the various functional stages in the life cycle of ameloblasts as would occur in a human tooth.**

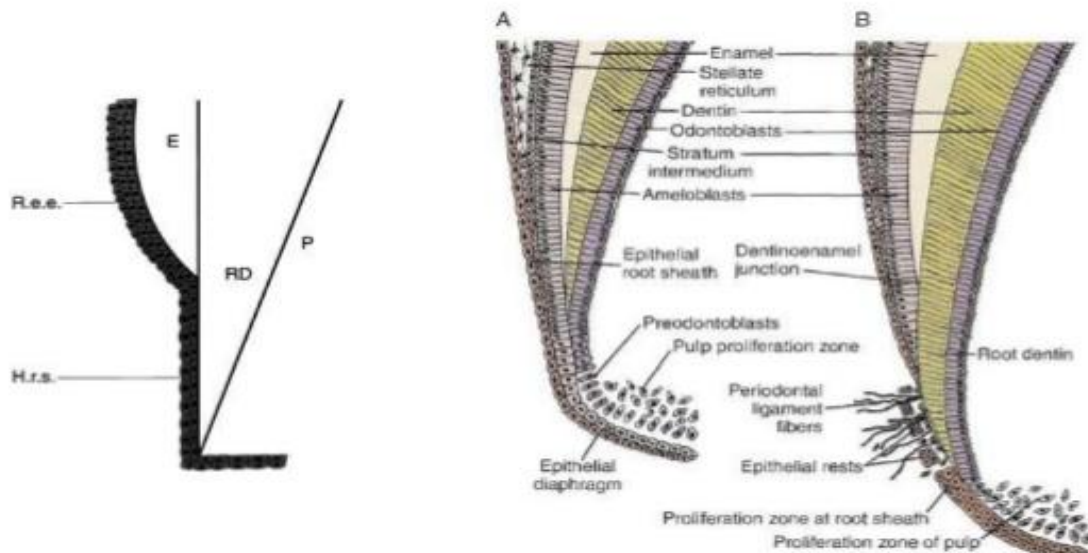
- 1, Morphogenetic stage;
- 2, histodifferentiation stage;
- 3, initial secretory stage (no Tomes' process);
- 4, secretory stage (Tomes' process);
- 5, ruffle-ended ameloblast of the maturative stage;
- 6, smooth-ended ameloblast of the maturative stage;
- 7, protective stage.



# Epithelial Root Sheath

- (эпителиальная оболочка)

## EPITHELIAL ROOT SHEATH OF HERTWIG





# Ectomesenchymal tissue

- (эктомезенхимальная ткань)

