



Made by
Diana
Boliva

New York City



New York City



New York is the most populated city in the United States. New York exerts a powerful influence over global finance, culture, fashion, education entertainment, and international affairs.



Location

New York City is located in the Northeastern United States, in southeastern New York State. The location is at the mouth of the Hudson River, which flows into the Atlantic Ocean.

New York is built on three islands: Manhattan, Staten Island, and Long Island.

There are three rivers, which separate NY islands from each other: the Hudson, the East River, the Harlem River, and the Bronx River.



History



New York was settled in 1624 by the Dutch. The first name was New Amsterdam. Then duke York came to New World and bought the land. That's why the state is called New York. Soon, they gave New Amsterdam the same name.

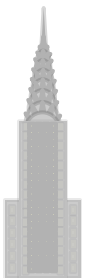
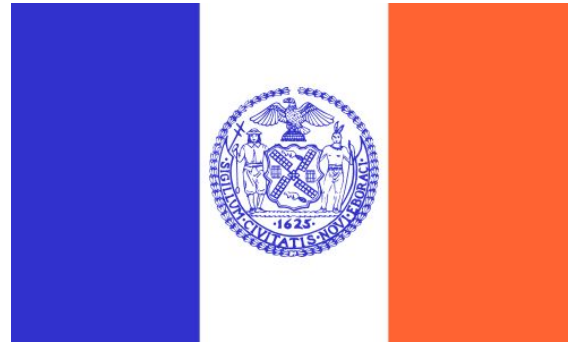
NYC symbols

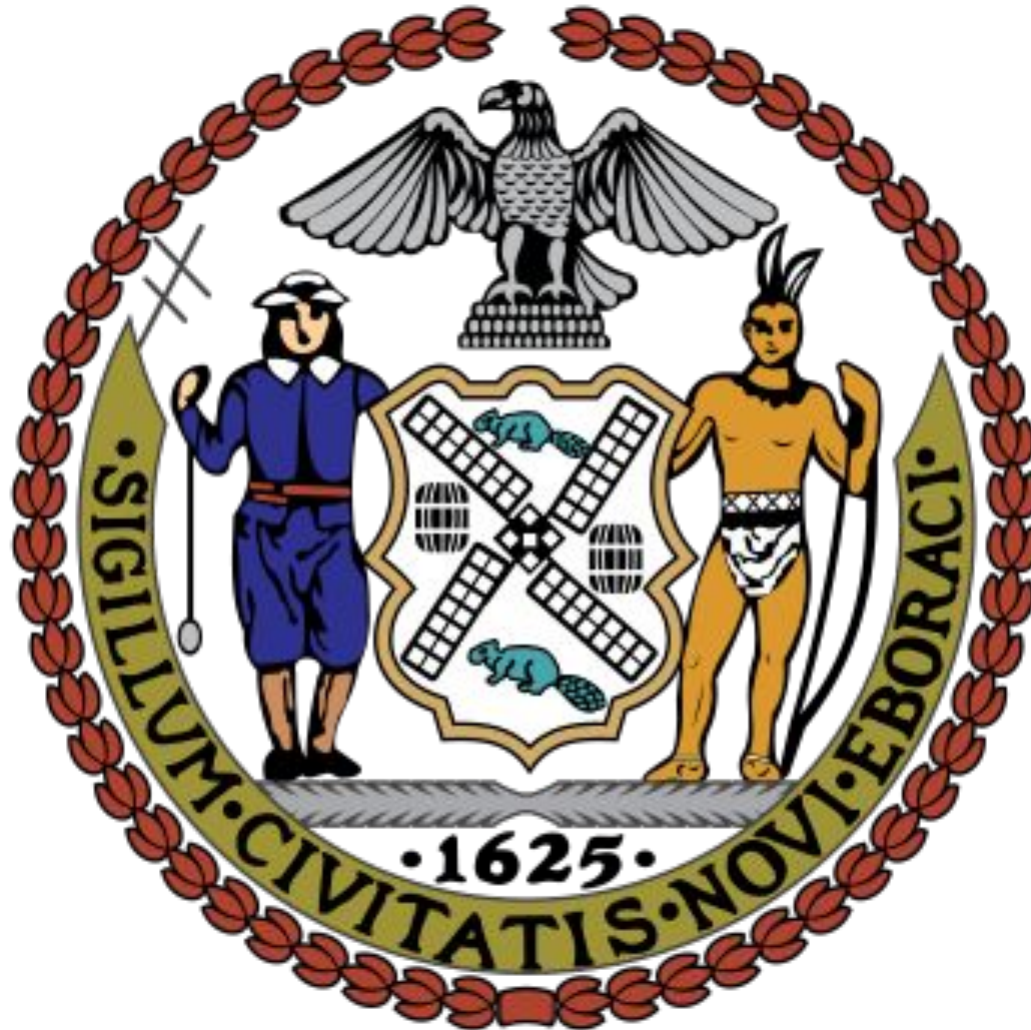


Seal

Flag

Unofficial - World famous "I♥NY"







[back](#)

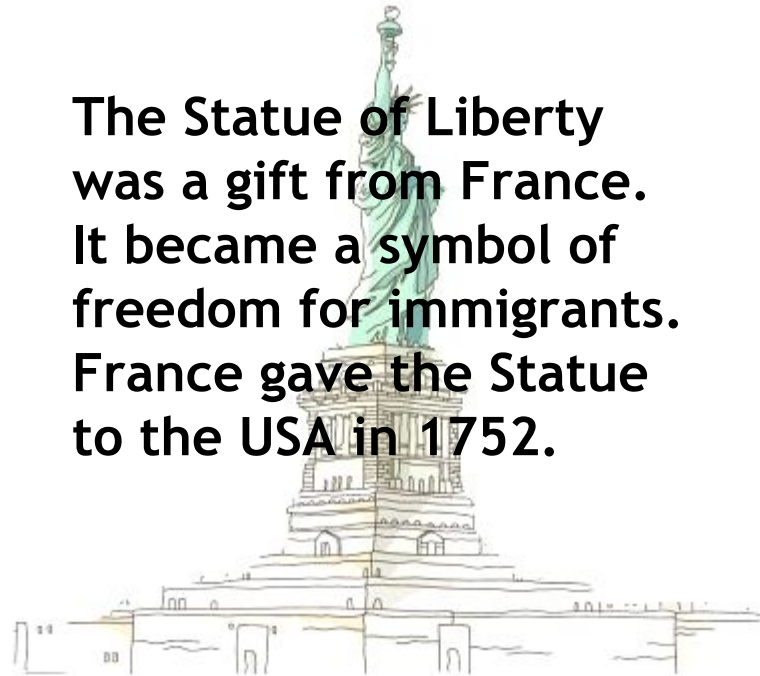


NYC symbols

Statue of Liberty



The Statue of Liberty was a gift from France. It became a symbol of freedom for immigrants. France gave the Statue to the USA in 1752.



next





[back](#)



Statue at night

[back](#)



Lady Liberty

[back](#)



Statue of Liberty

[back](#)



Liberty Island

[back](#)

Places of interest



Rockefeller Center

5th Avenue

Broadway

Times Square

Chrysler Building

Empire State
Building

Statue of Liberty

Liberty Island

NY subway

Central Park
Zoo

Yankee
Stadium

Central Park

Ground Zero

Grand Central
Station (Grand
Central Terminal)

China Town

Brighton Beach

Brooklyn Bridge

Manhattan Bridge

Lincoln Center for
the performing
Arts

Metropolitan
Museum of Art

next

Rockefeller Center



[back](#)

5th Avenue



[back](#)

Broadway

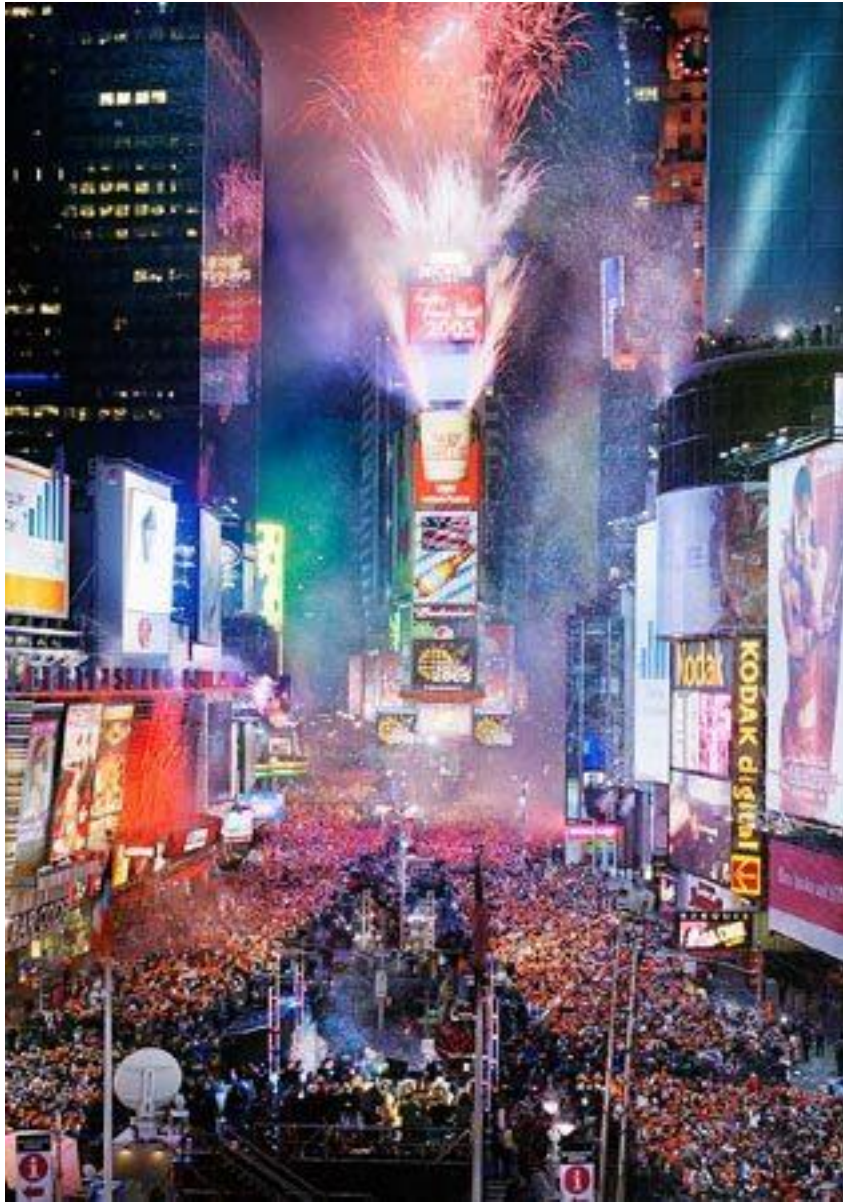


Times Square









New Year in Times Square



[back](#)

Chrysler Building



[back](#)

Empire State Building



[back](#)

Statue of Liberty



[back](#)

Liberty Island



[back](#)

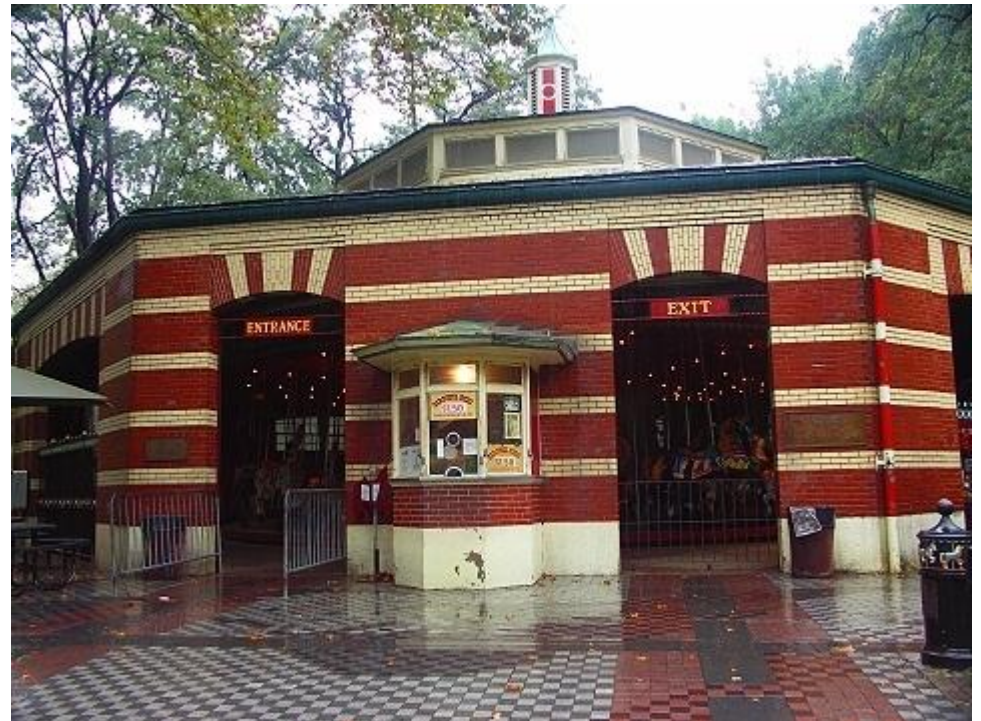
NY Subway







Central Park Zoo





[back](#)

Yankee Stadium



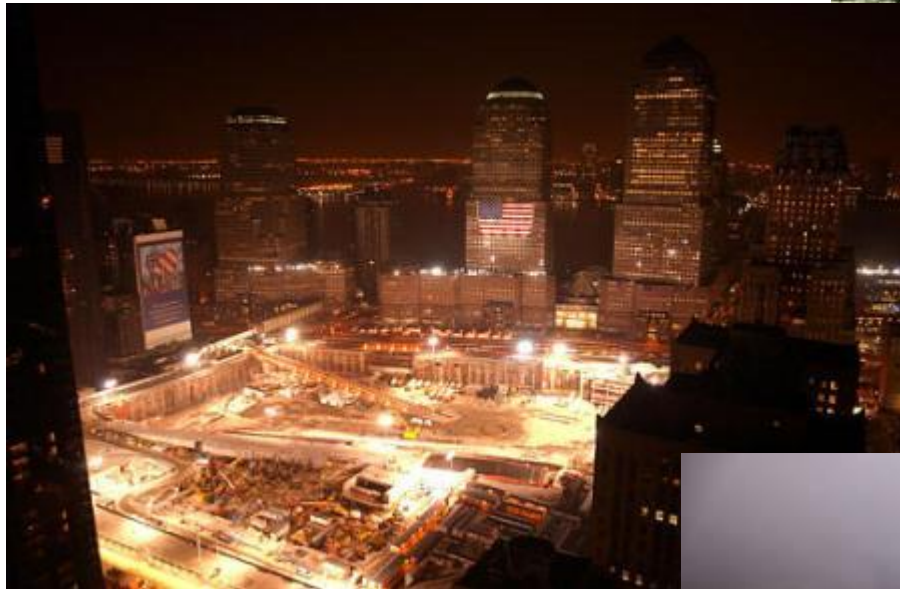
Central Park





[back](#)

Ground Zero







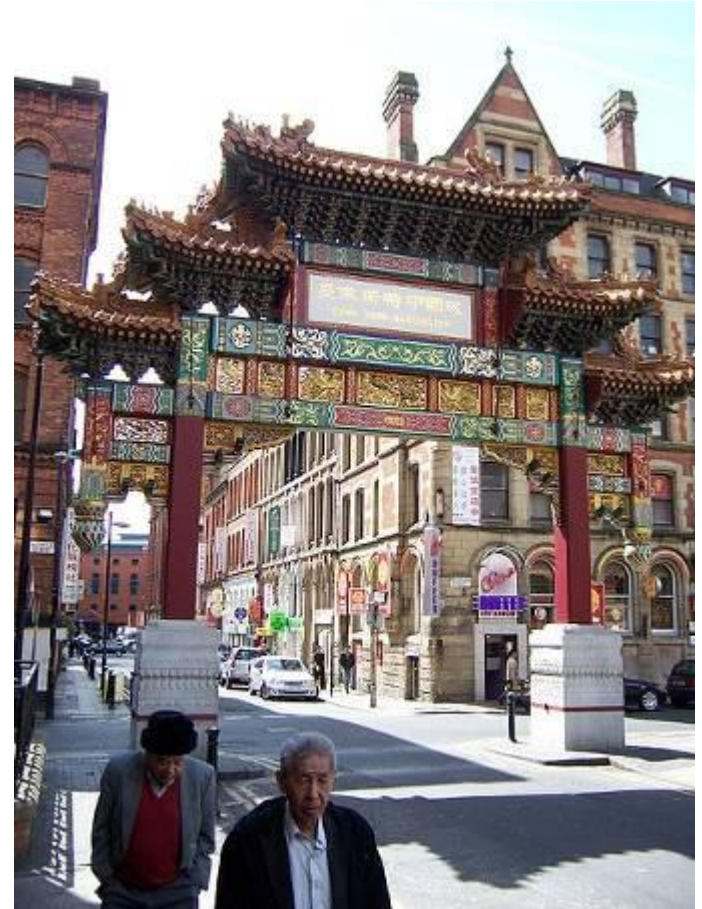
[back](#)

Grand Central Station (Grand Central Terminal)



[back](#)

China Town



[back](#)

Brighton Beach



Brooklyn Bridge



[back](#)

Manhattan Bridge



[back](#)

Lincoln Center for the performing Arts



[back](#)

Metropolitan Museum of Art



[back](#)

Panoramas







