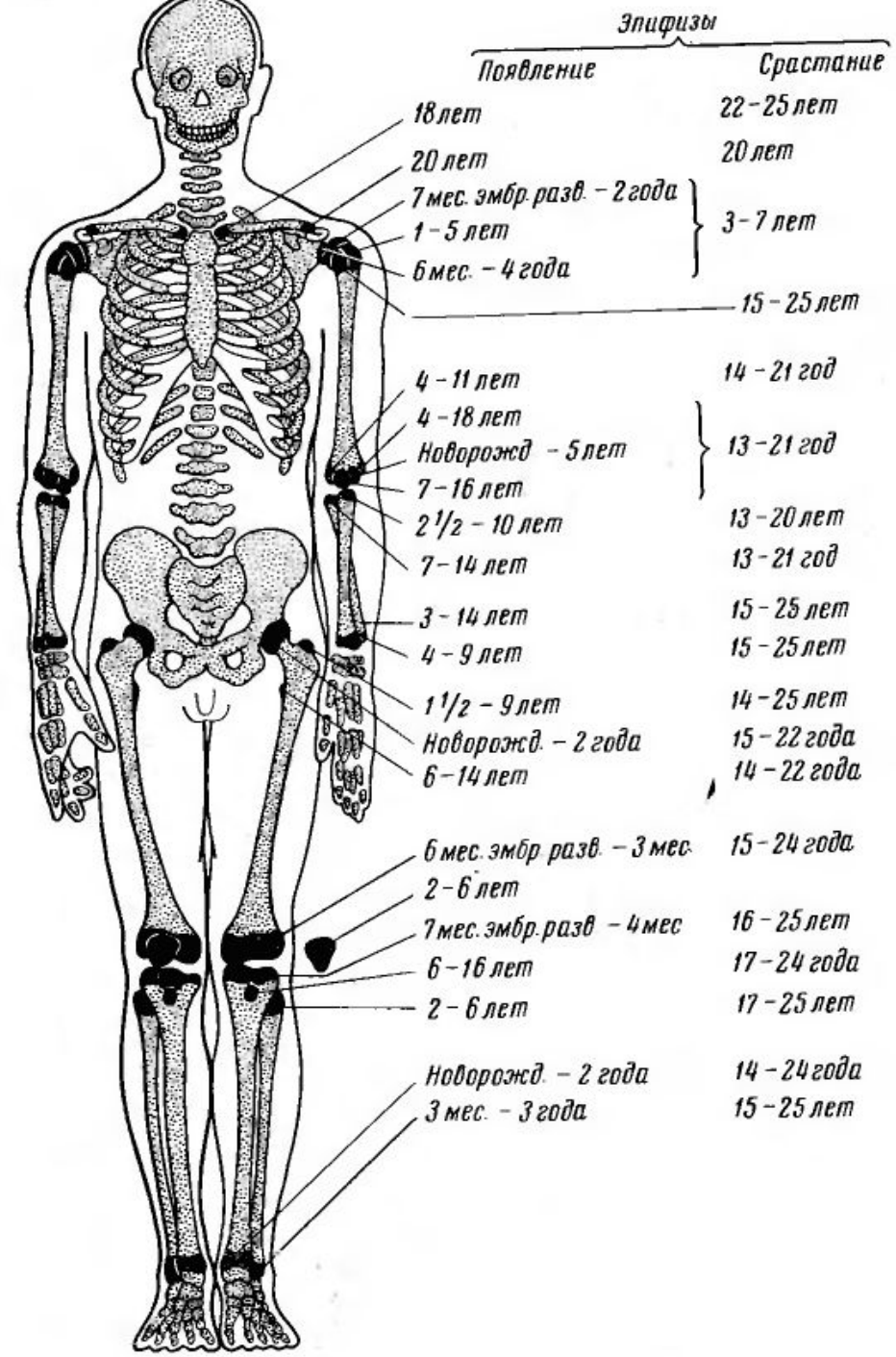
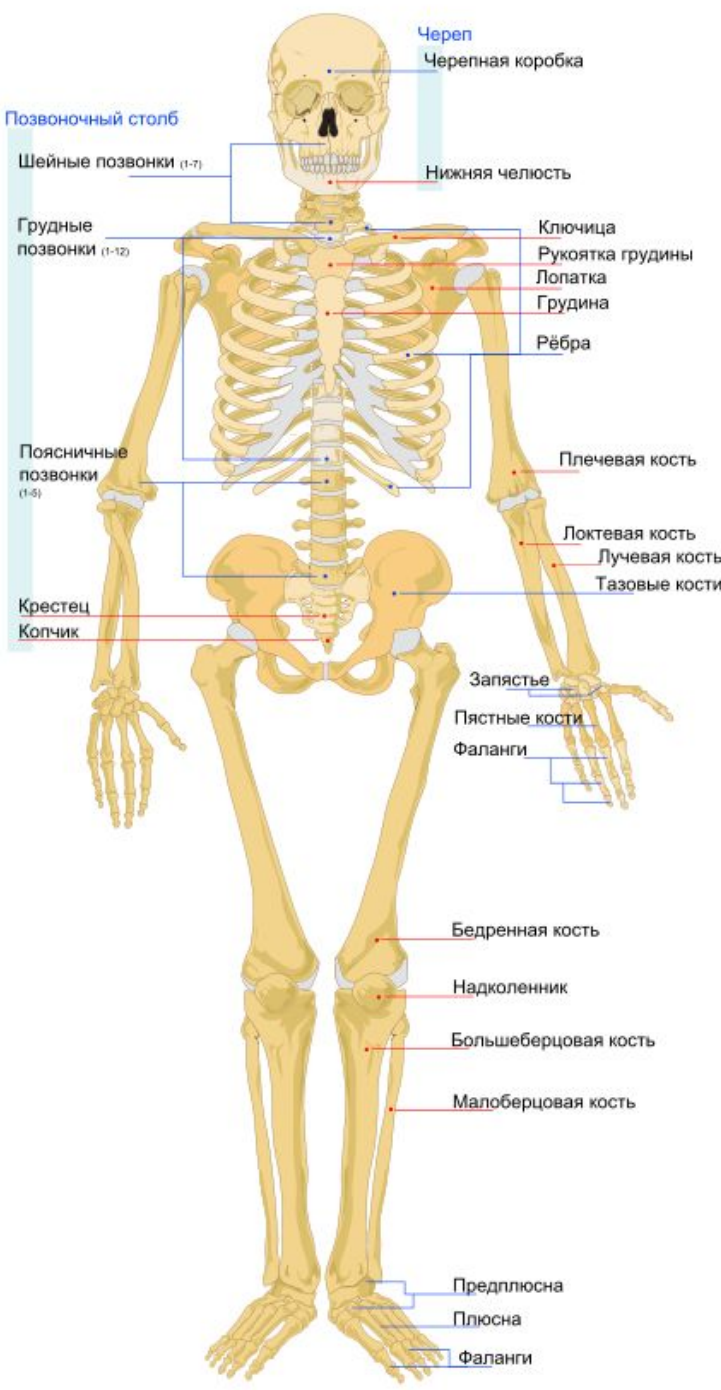
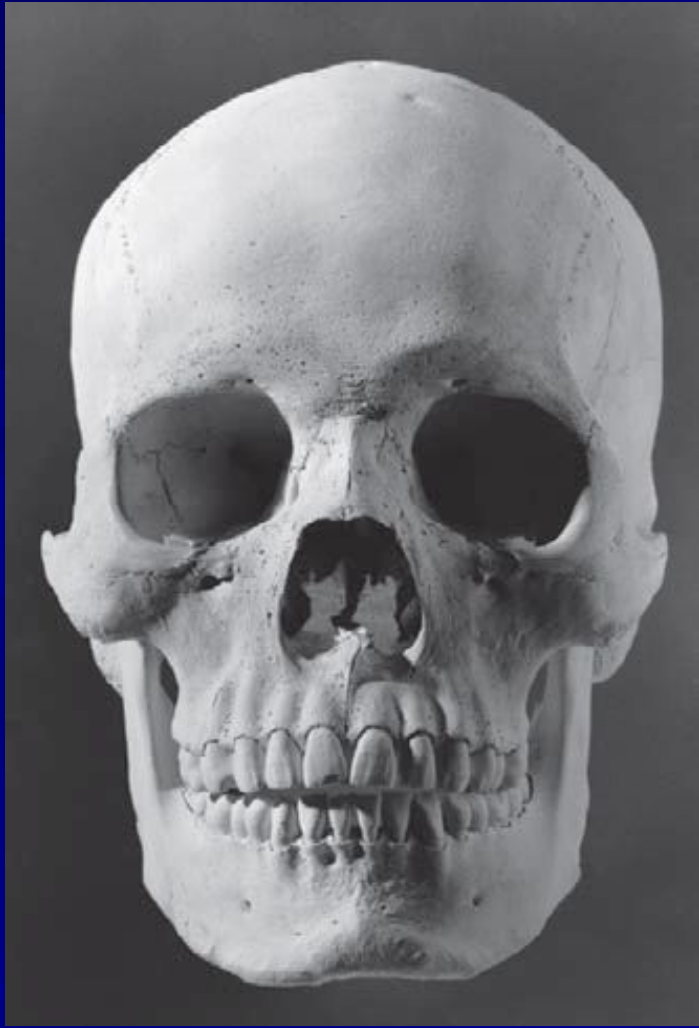
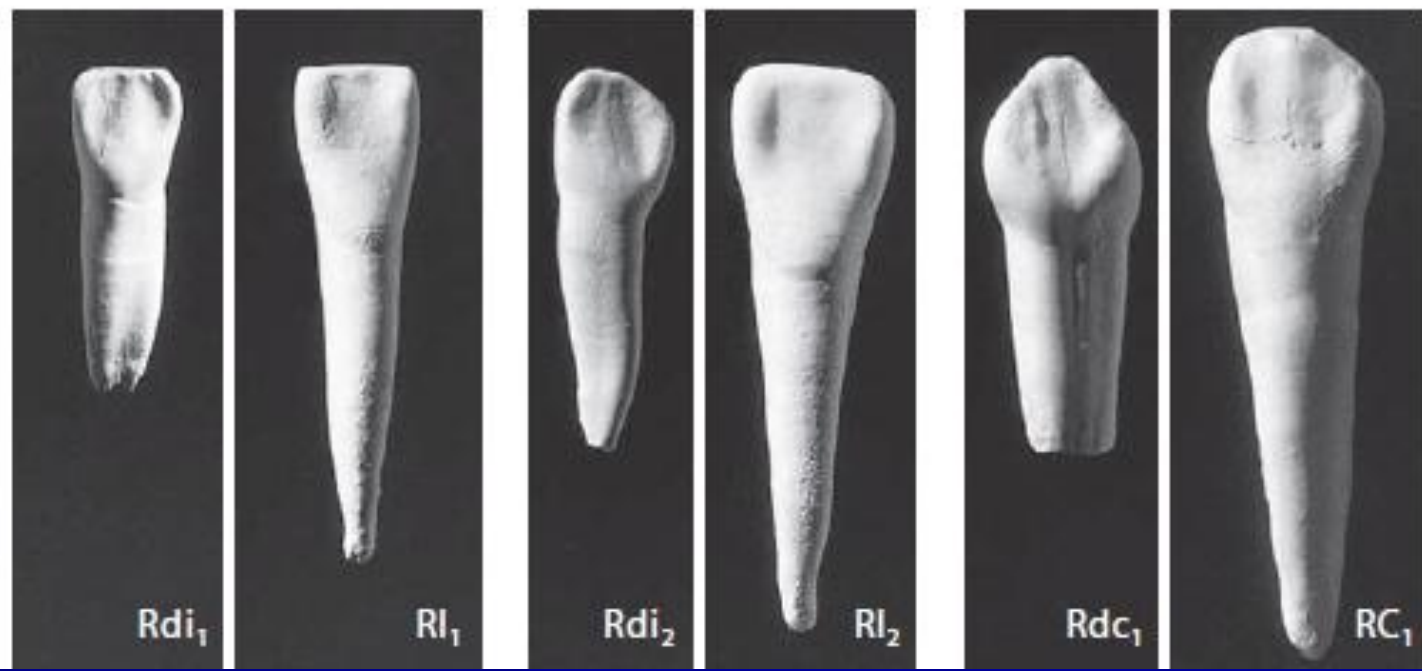
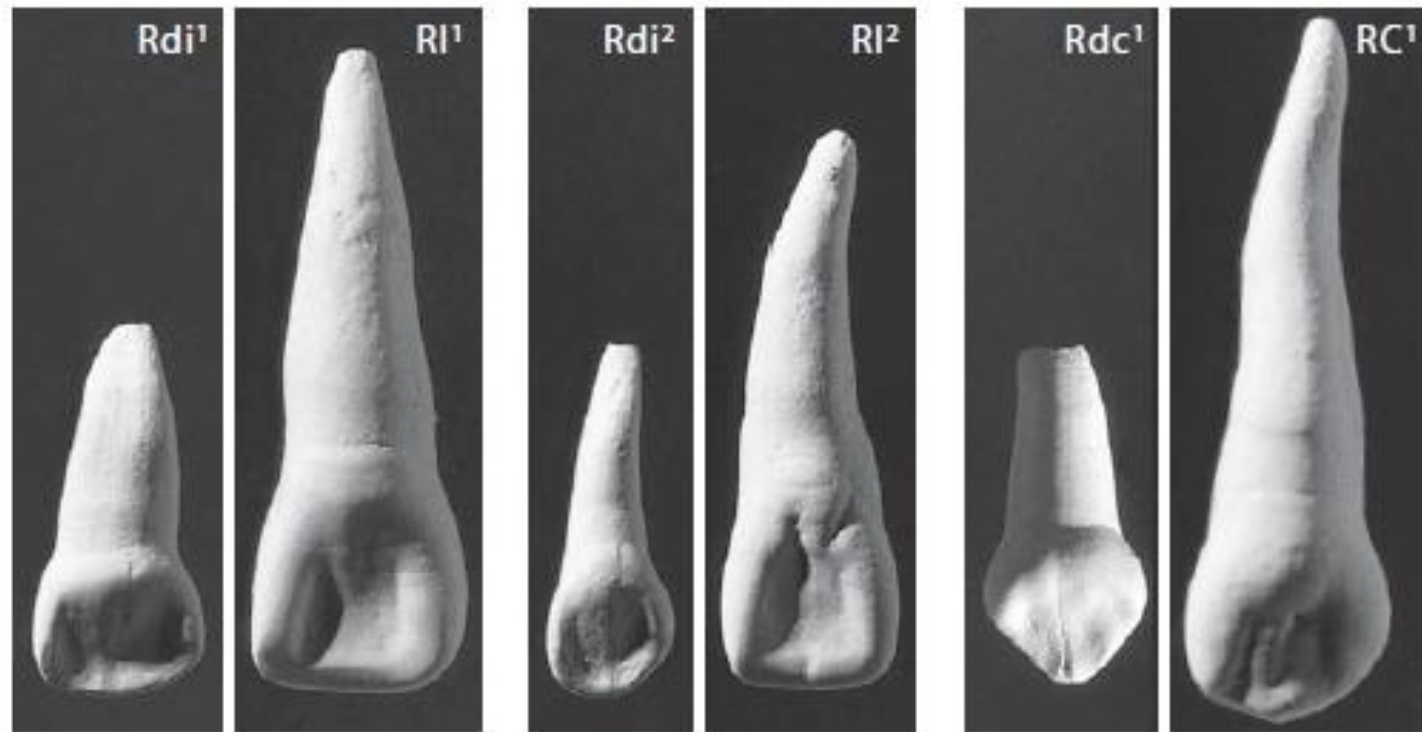


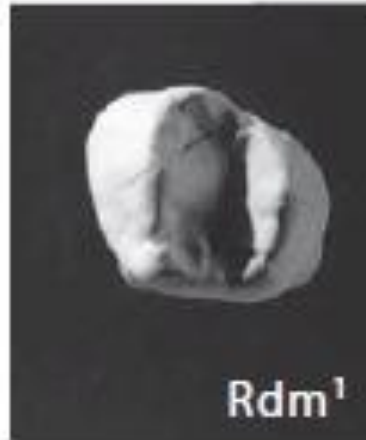
Основы изучения скелетированных останков человека











Определение пола и возраста по скелетным останкам

Возрастная периодизация

Детский (Infantilis)	первый (Infantilis I)	до 6-7 лет
	второй (Infantilis II)	до 12-13 лет
Юношеский (Juvenis)		до 18-20 лет
Взрослый (Adultus)	первый (Adultus I)	20-(24) лет
	второй (Adultus II)	(25)-34 лет
Зрелый (Maturus)	первый (Maturus I)	35-(44) лет
	второй (Maturus II)	(45)-55 лет
Старческий (Senilis)		56 лет и старше



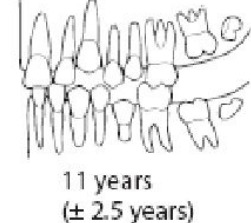
5 months
In utero
(± 2 months)



2 years
(± 8 months)




7 years
(± 2 years)



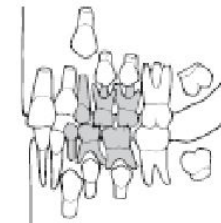
11 years
(± 2.5 years)



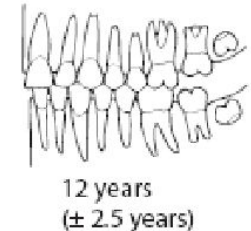
7 months
(± 2 months)



3 years
(± 1 year)



8 years
(± 2 years)



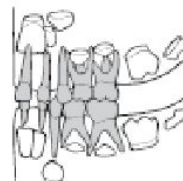
12 years
(± 2.5 years)



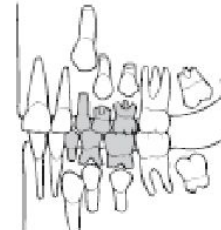
Birth
(± 2 months)



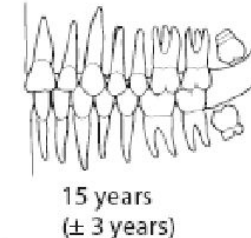
6 months
(± 3 months)



4 years
(± 1 year)



9 years
(± 3 years)



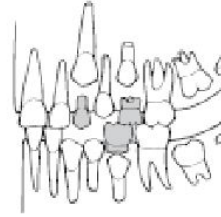
15 years
(± 3 years)



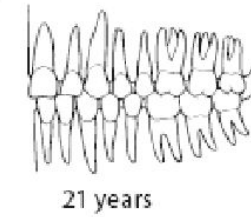
9 months
(± 3 months)



5 years
(± 1.5 years)



10 years
(± 2.5 years)



21 years



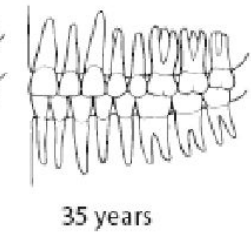
1 year
(± 4 months)



18 months
(± 6 months)



6 years
(± 2 years)



35 years



Кость	Новорожденные	Первое детство (до 7 лет)	Второе детство (до 12/13 лет)	Юношеский возраст*
Плечевая	45-70	70-190	190-250	250-х
Лучевая	35-60	60-150	150-200	200-х
Локтевая	40-65	65-165	165-220	220-х
Бедренная	75-85	85-260	260-360	360-х
Большая берцовая	60-70	70-220	220-280	280-х
Малая берцовая	55-67	67-220	220-275	275-х

* Только для костей, не имеющих эпифизы.

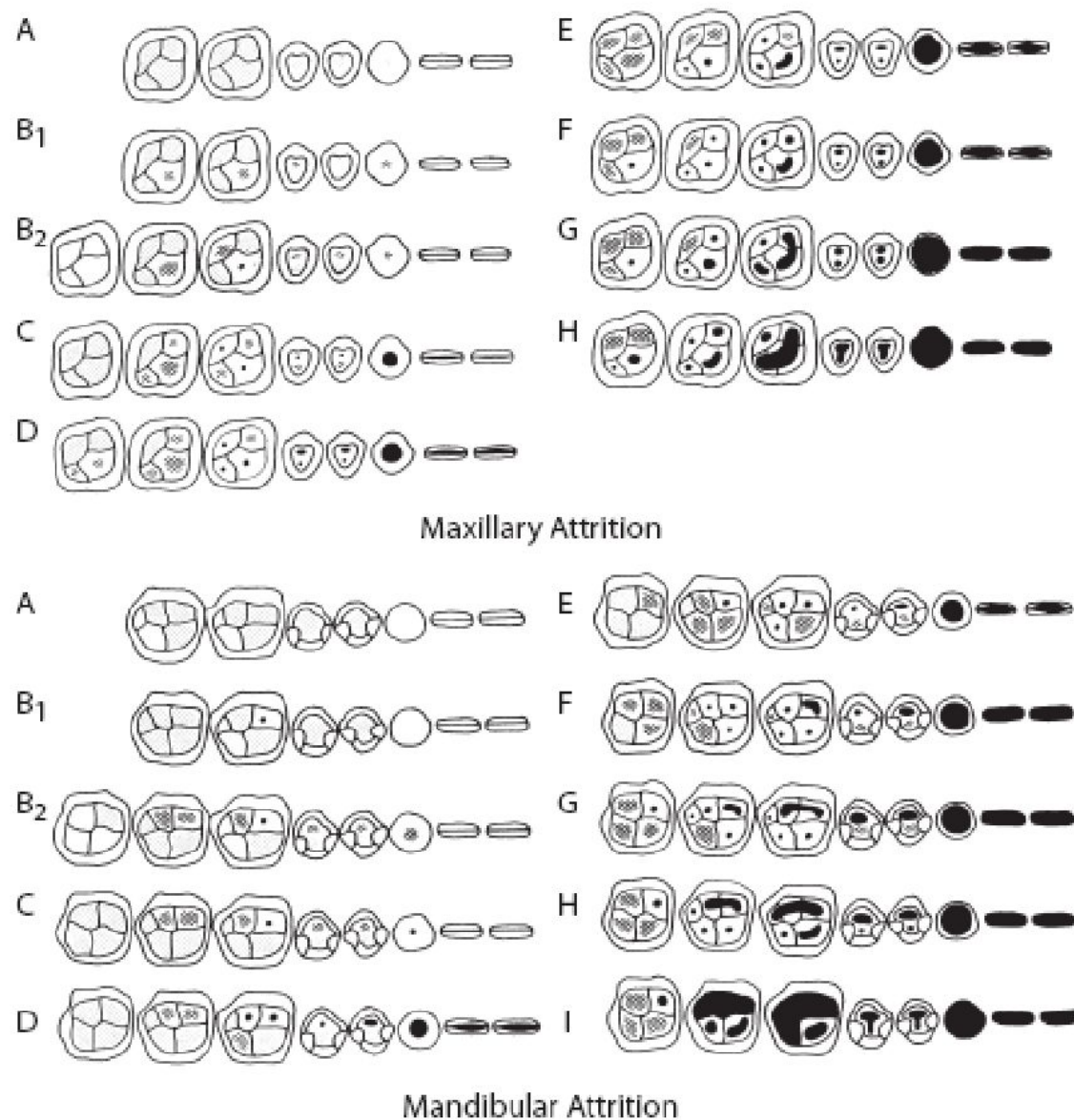


Figure 19.3 Modal tooth-wear patterns of a prehistoric Native American population from Libben, Ohio. Wear is divided into phases for right maxillary (top) and left mandibular (bottom) dentitions. Exposed dentine is shown in black. Age in years for the various phases are as follows: A, 12–18; B₁, 16–20; B₂, 16–20; C, 18–22; D, 20–24; E, 24–30; F, 30–35; G, 35–40; H (maxillary), 40–50; H (mandibular), 40–45; I, 45–55. See Lovejoy (1985) for a full description.

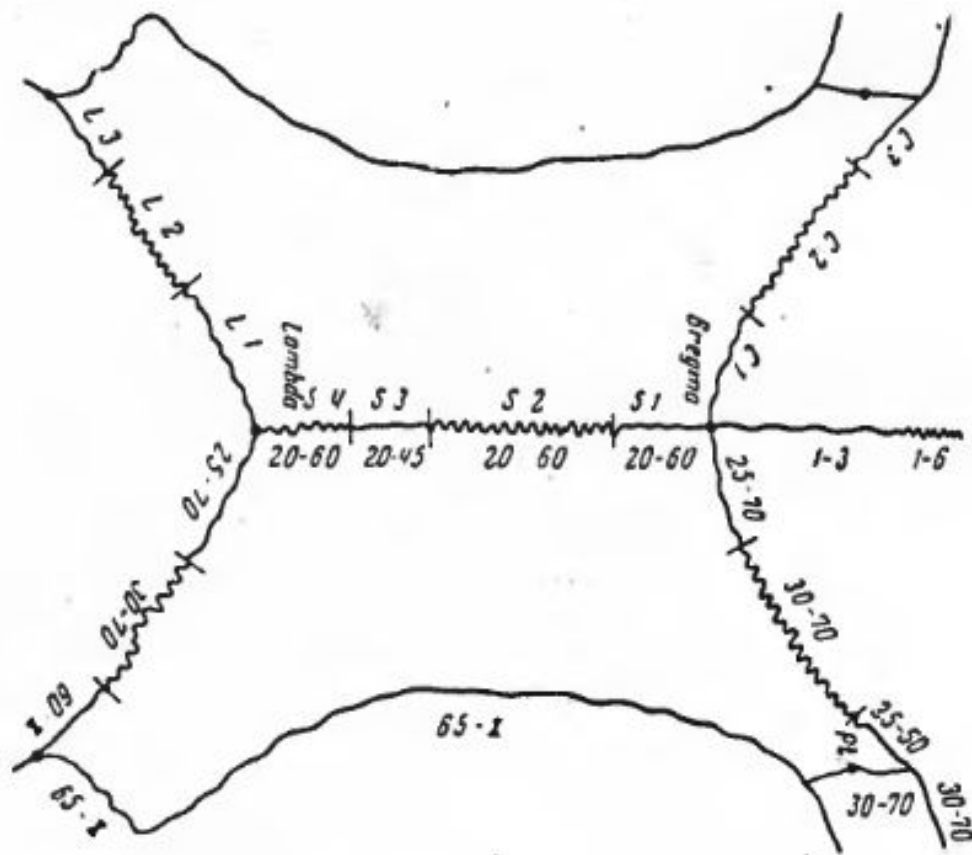
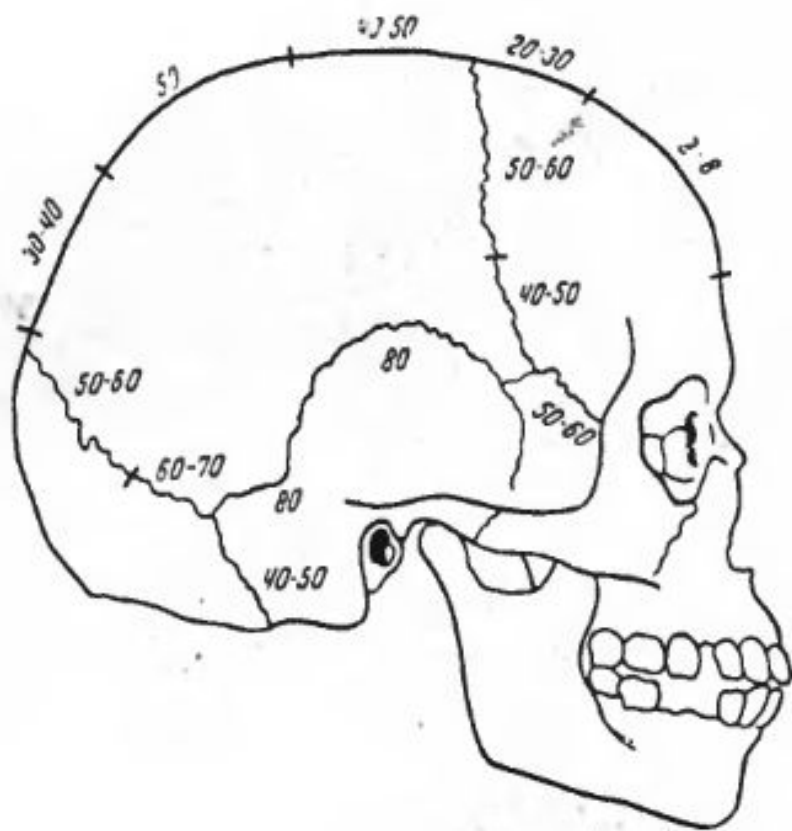
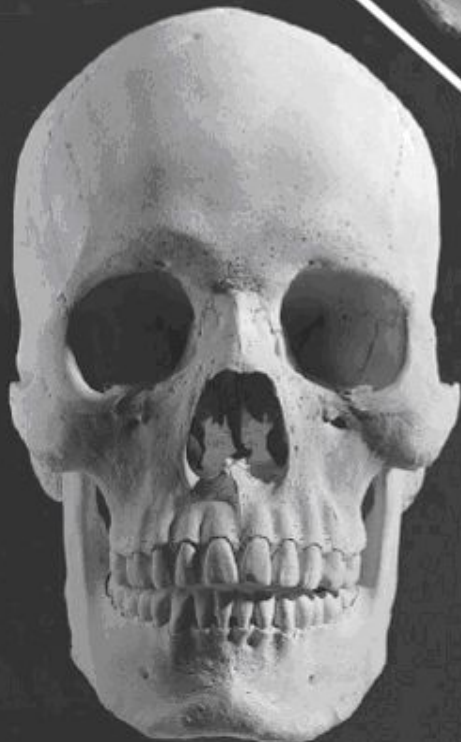
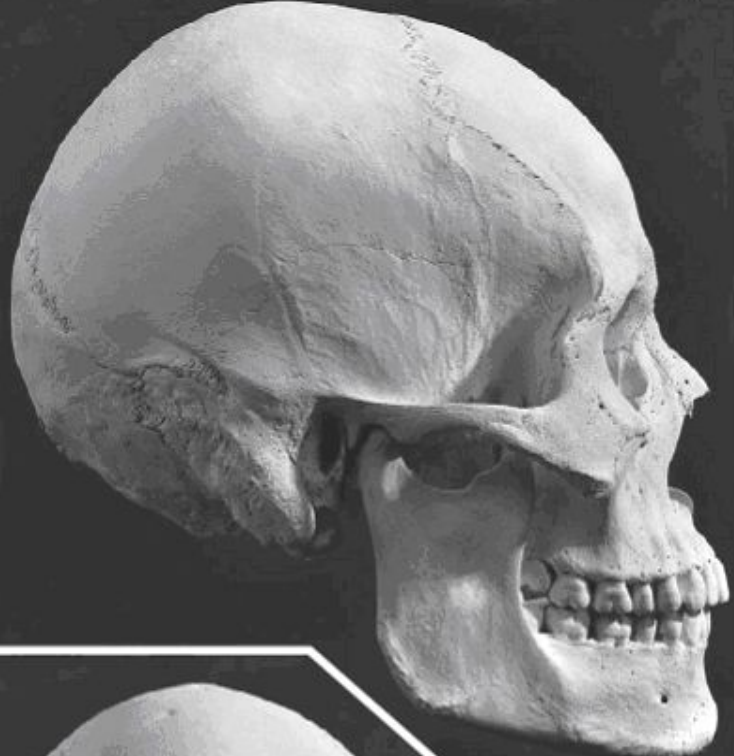
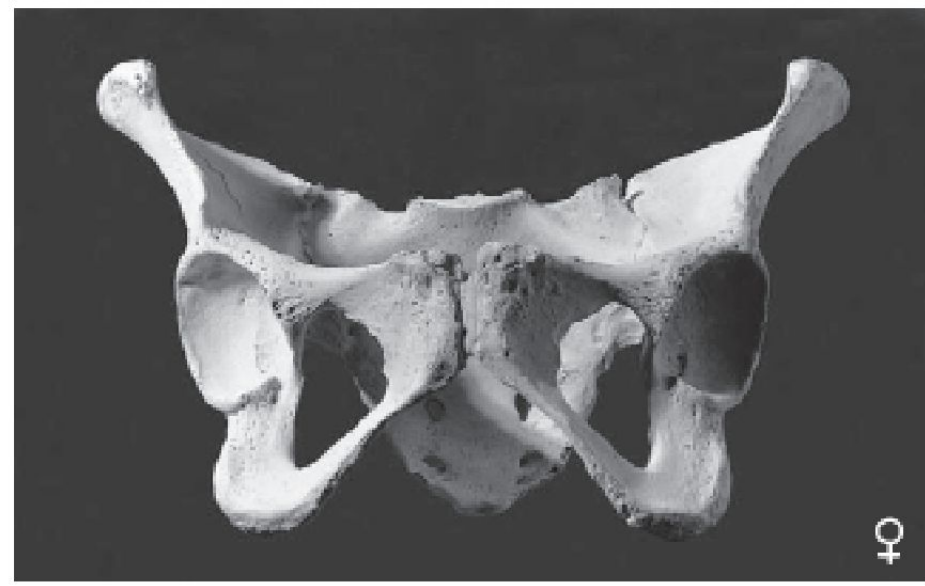


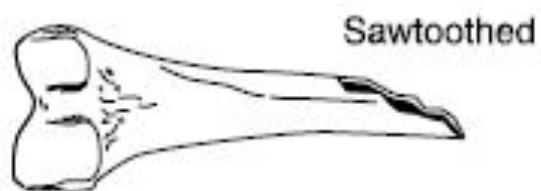
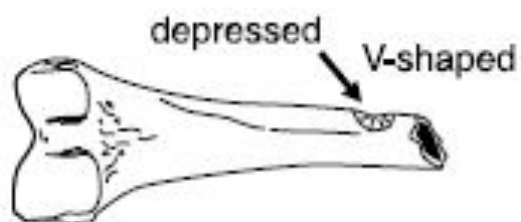
Рис. 11. Схема облитерации черепных швов (по Симпсону и по Оливье)







Perimortem Fractures



Postmortem Fractures

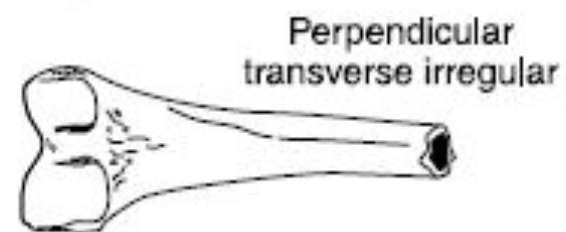
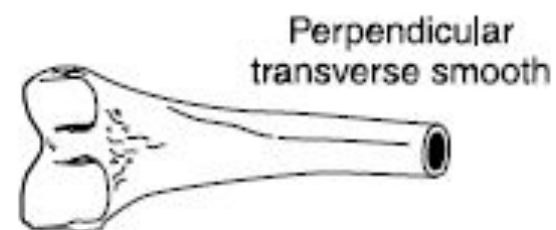
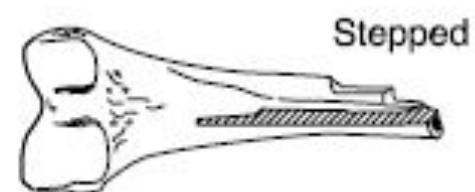
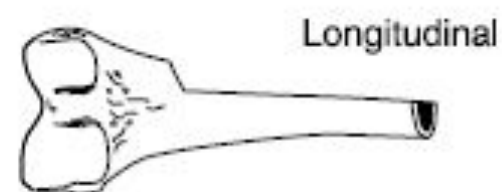


Figure 3.8 Fracture types in long bone shafts. (Adapted from Marshall, 1989:14.)



