

PAP5300DUO
service manual

content

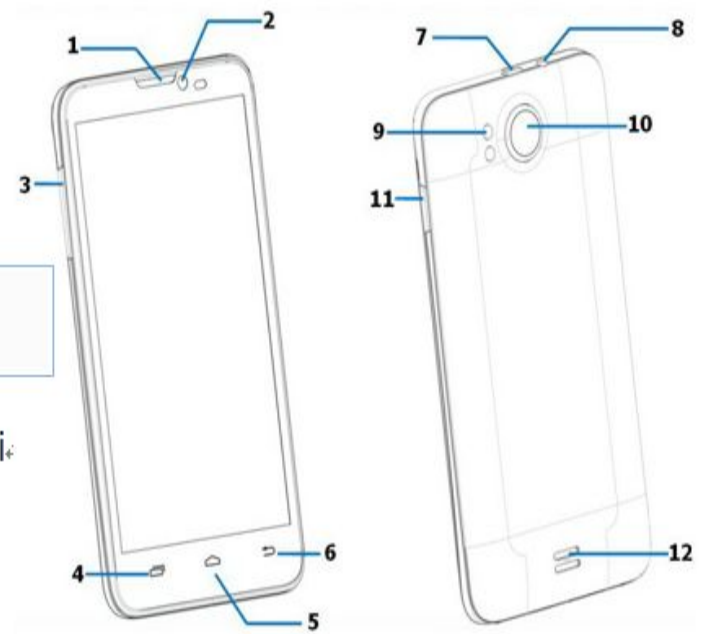
- 1、 Product introduce.....p3-p5**
- 2、 Disassembly guidep6-p20**
- 3、 Repairing guidep21-p31**

Product introduce



1	Приймач	Отримання голосових дзвінків
2	Передня камера	Фотозйомка перед екраном
3	Гучність + \ -	Налаштування рівня гучності
4	Меню	Відображення опцій меню
5	Головна сторінка	Повернення на Головну сторінку
6	Назад	Повернення на по
7	USB-порт	Підключення кабе
8	Роз'єм навушників	Підключення навушників
9	Фотоспалах	Фотозйомка в умовах низької освітленості
10	Задня камера	Фотозйомка
11	Живлення	Увімкнення / вимкнення пристрою; Перехід в / вихід зі сплячого режиму
12	Динамік	Відтворення музики телефону

当前词典中暂无与“o”相符的解释



Product introduce

Model :

Product size: 147*77.2*9.9

Platform: Qualcomm MSM8225Q, Quad-Core 1.2GHz

Memory: 4GB+1GB (Nand&sdram+RAM)

System: Android 4.1

Frequency band: WCDMA:900/2100MHz, GSM:900/1800/1900MHz

Battery: 2100mAh

charger: Travel charger

USB cable: MICRO 5PIN

earphone: 3.5jack

LCD&TP: 5.3 FWVGA TN, resolution:854*480, Capacitance TP (Glove touch), multi-point touch

Camera:1.2M and 8.0M CMOS

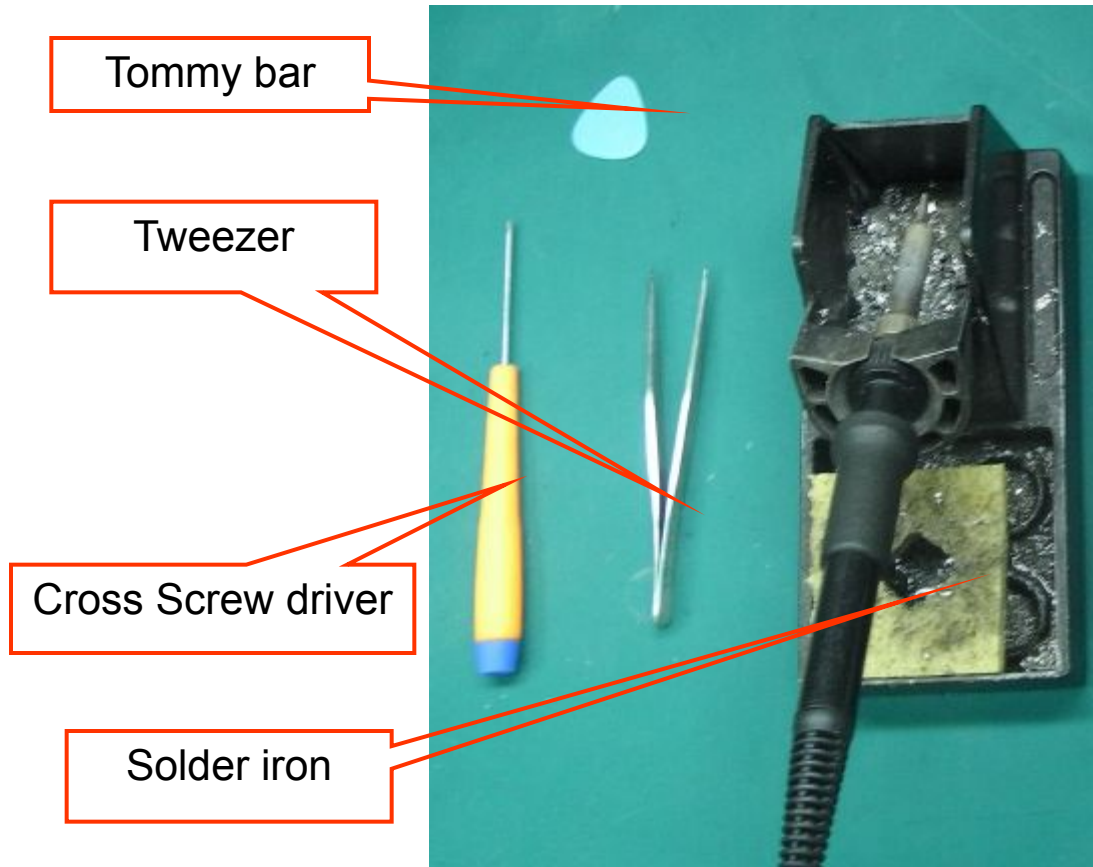
Support:GPS, BT4.0, WIFI, FM。

Support:3D graphics accelerator, accelerator sensor, distance sensor, light feeling sensor。

Disassembly guide

1. Tools list

Tweezer /Cross screw driver/ Solder/Tommy bar/hot gun



Disassembly guide

2. Battery cover disassembly

open the battery cover, as the Fig. 1

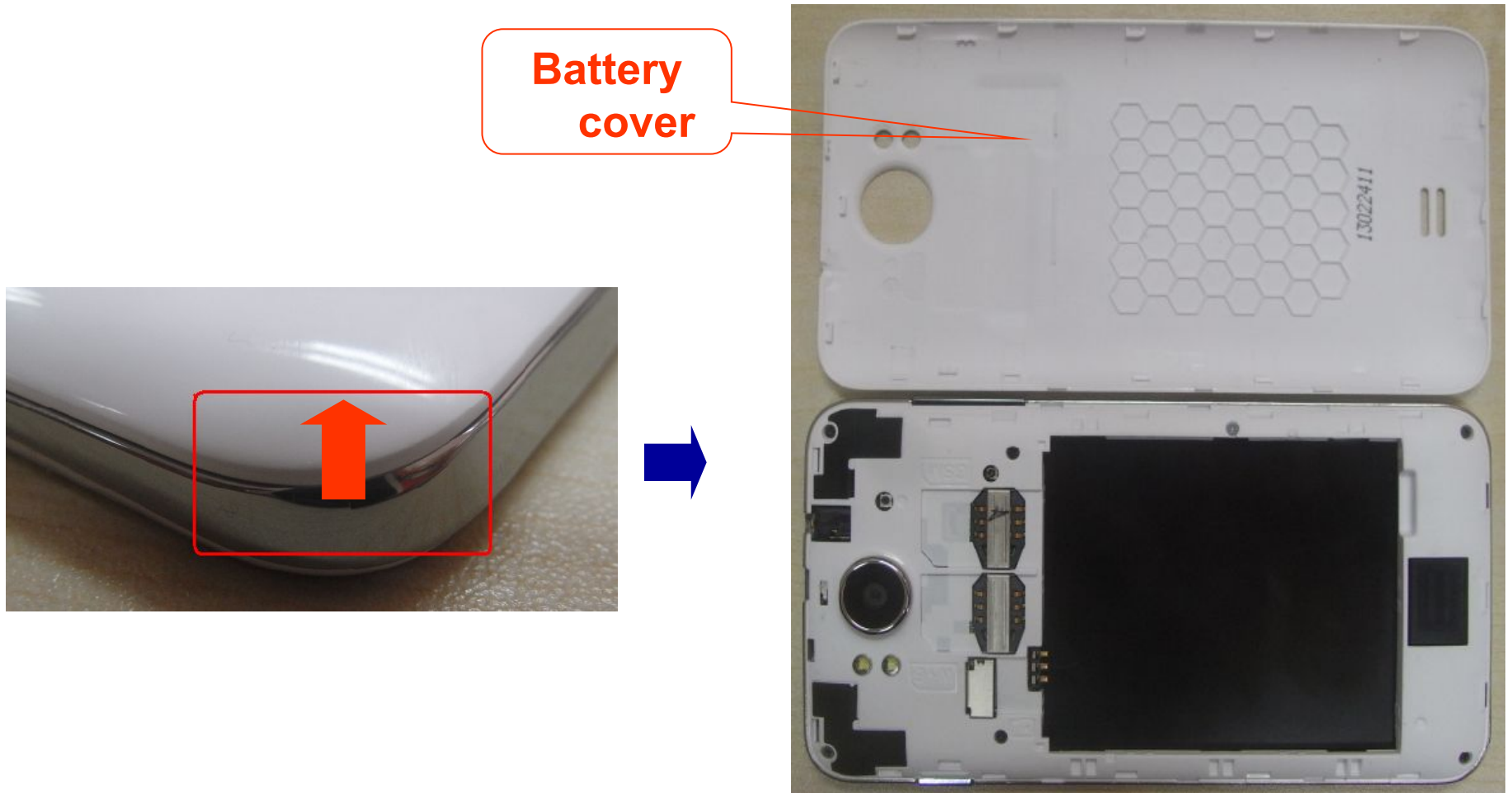


Fig. 1

Disassembly guide

3. Back cover disassembly

1) Unscrew 7 screws in back cover , as the Fig.2;

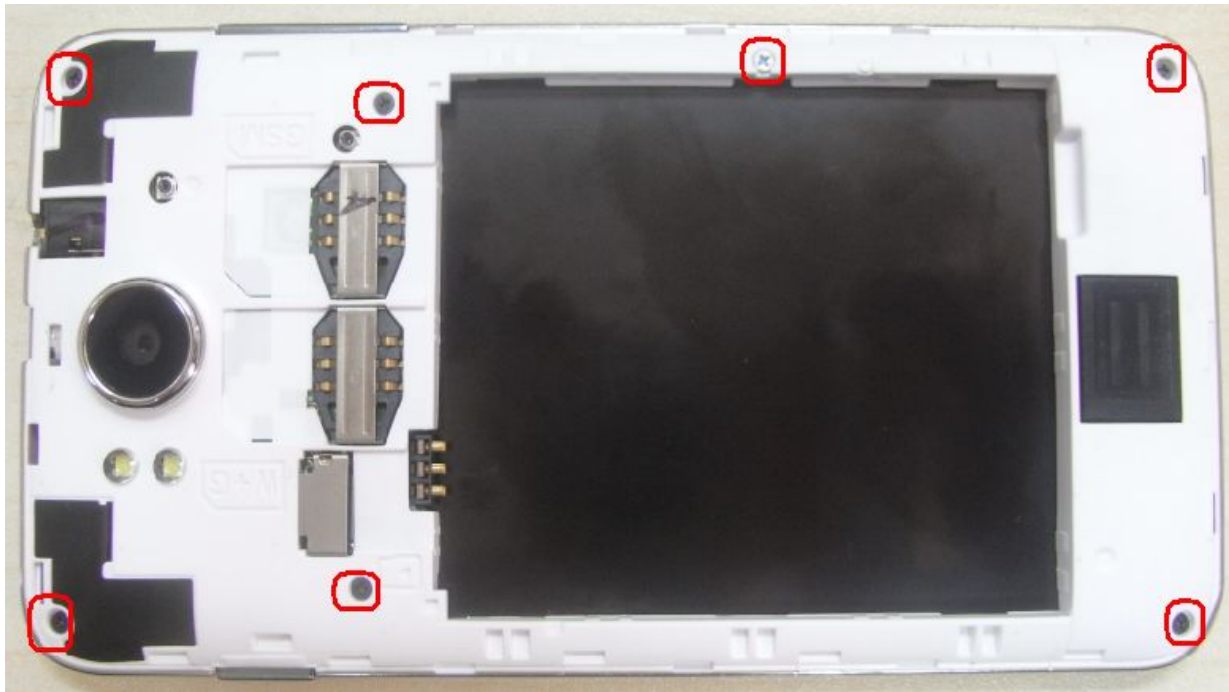


Fig. 2

Disassembly guide

2) Disassemble back cover with Tommy bar , as the Fig.3;

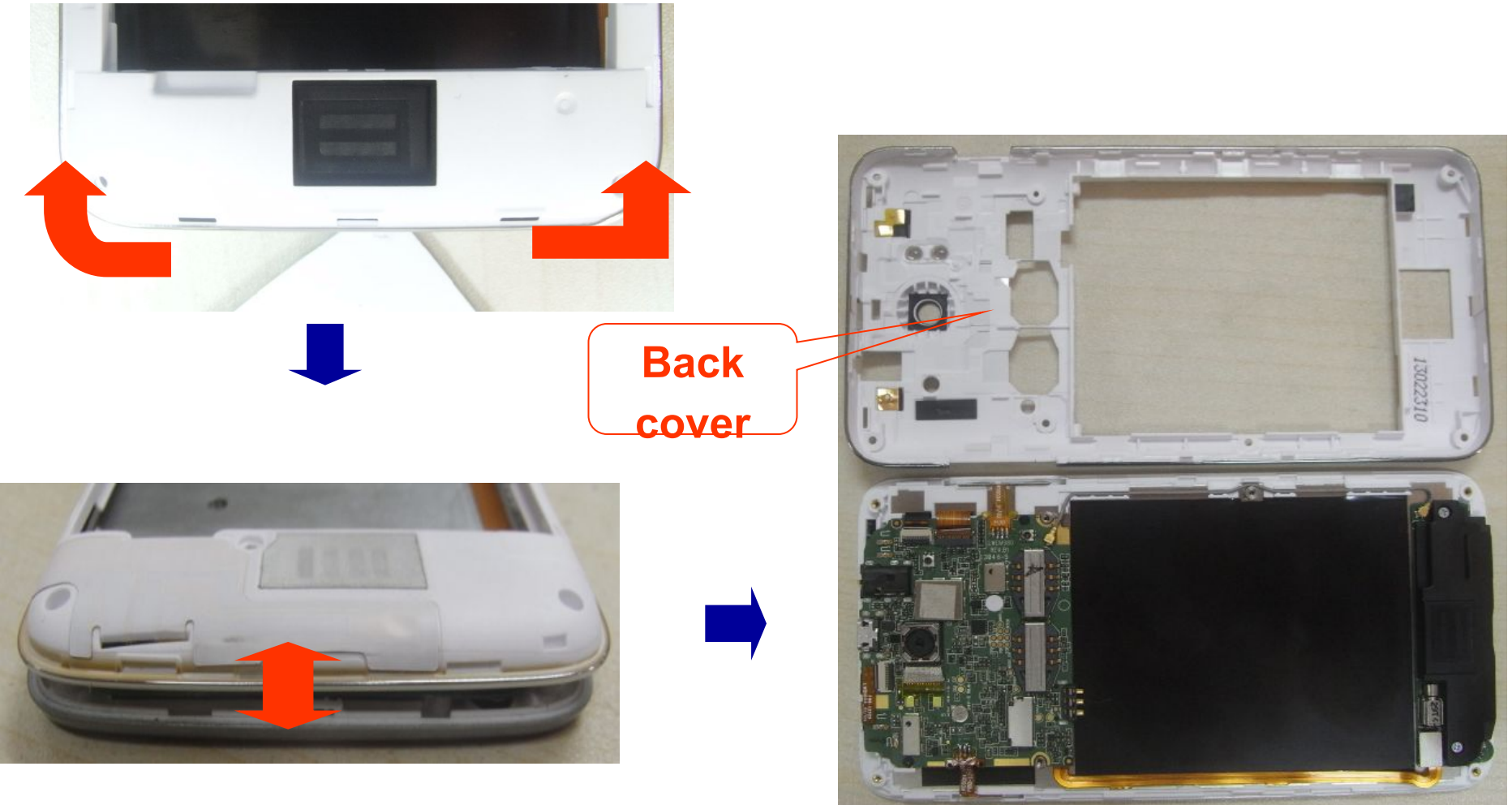


Fig. 3

Disassembly guide

4.Main board and front cover disassembly

1) The main components of distribution, as the fig.4 ;

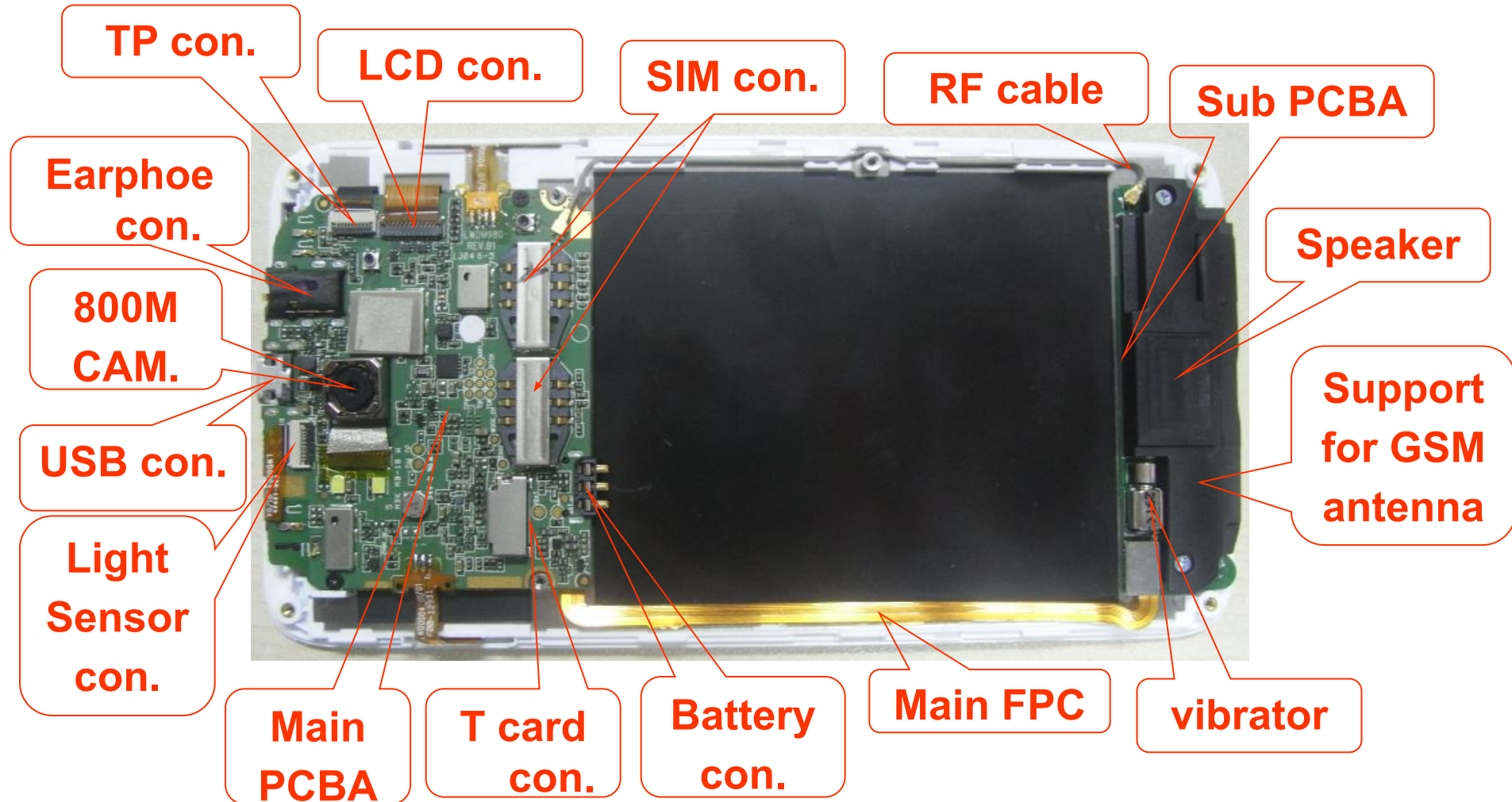


Fig.4

Disassembly guide

2) remove two screws and open the LCD con.& TP con. , as the fig.5;

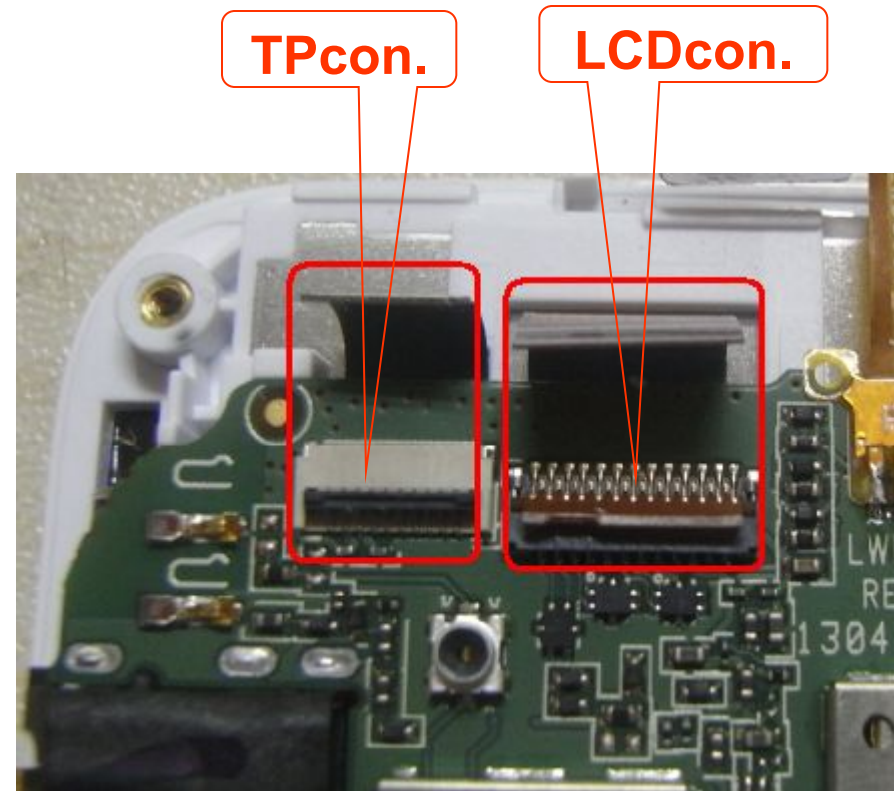
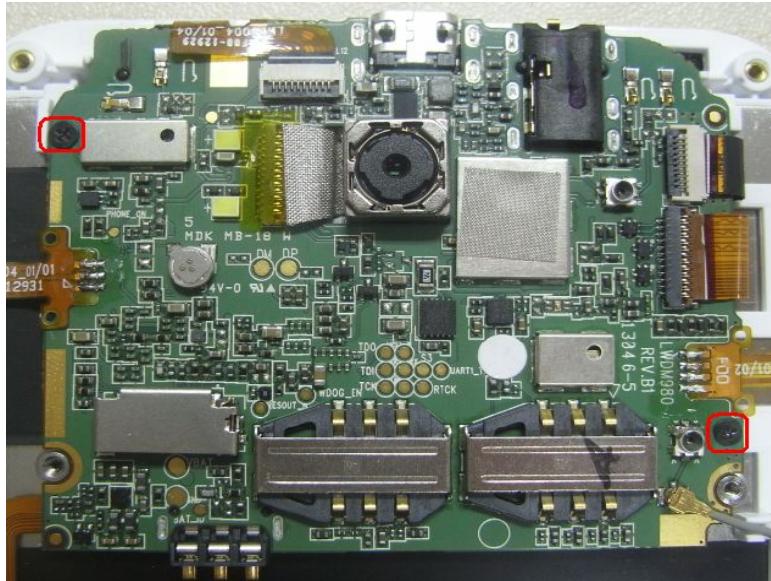
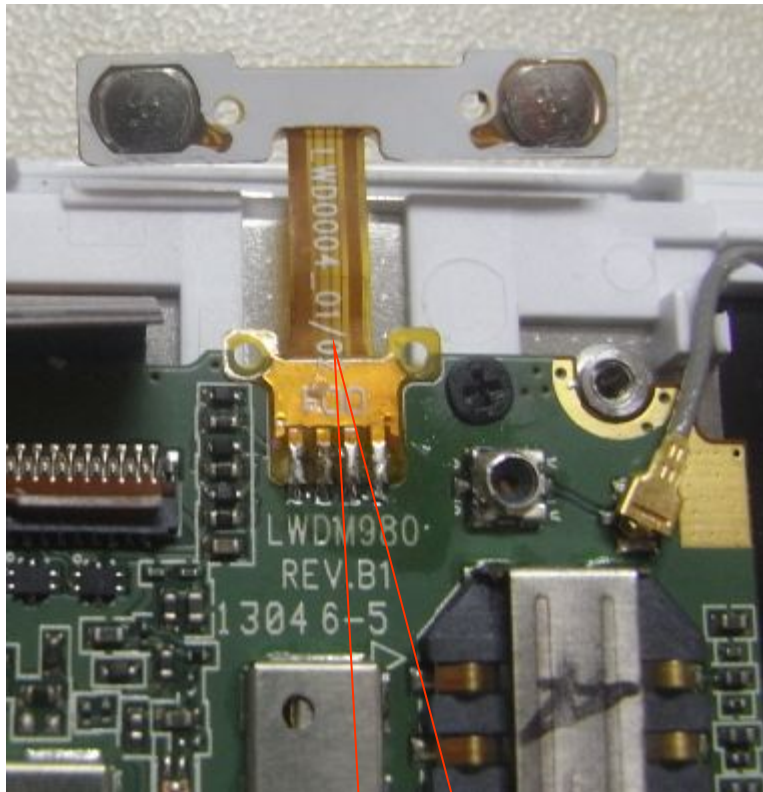


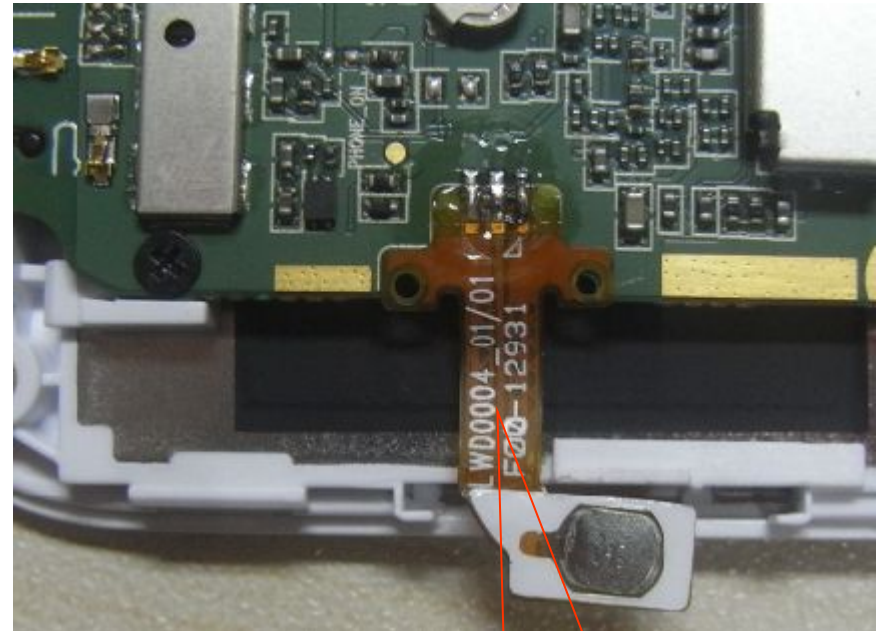
Fig.5

Disassembly guide

3) remove the volume key FPC & power key FPC, as the FIG. 6



**Volume key
FPC**



**Power key
FPC**

Fig.6

Disassembly guide

4) open the main board and remove the RF cable con. And main FPC con..as the FIG.7

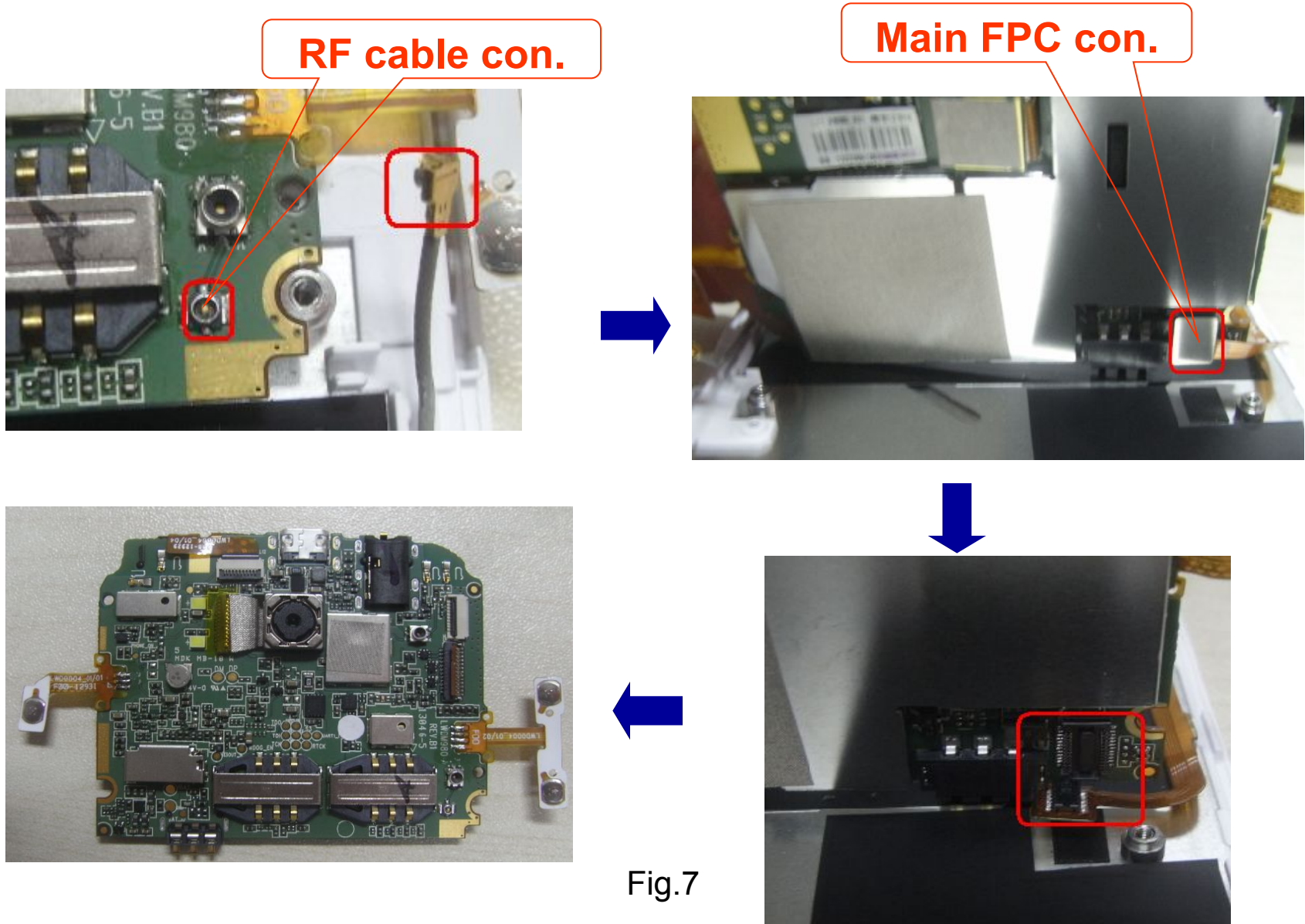
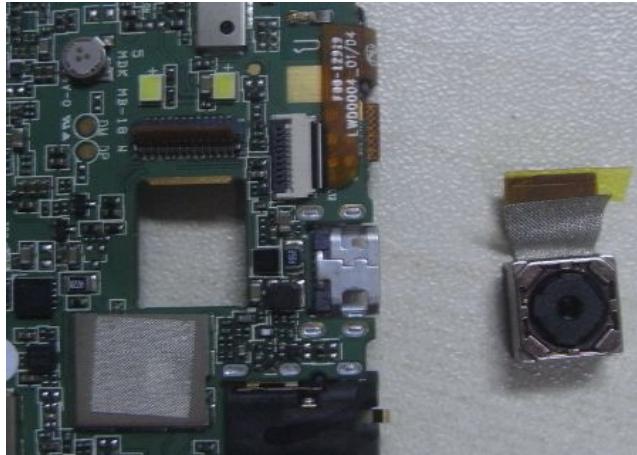


Fig.7

Disassembly guide

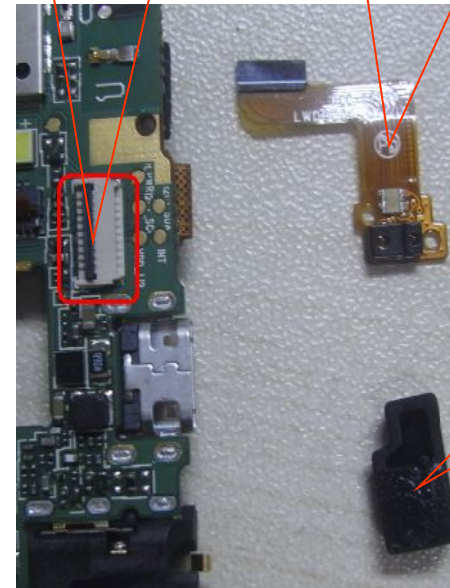
5. 3M camera & light sensor disassembly

remove the light sensor and 1.2M camera and 8M camera , as the fig.8;

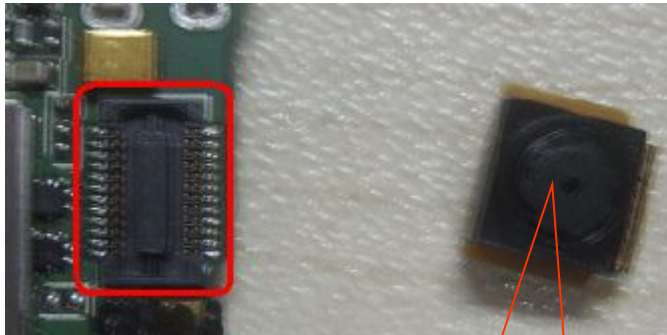


Light sensor con.

Light sensor FPC



**Support For
Light sensor**



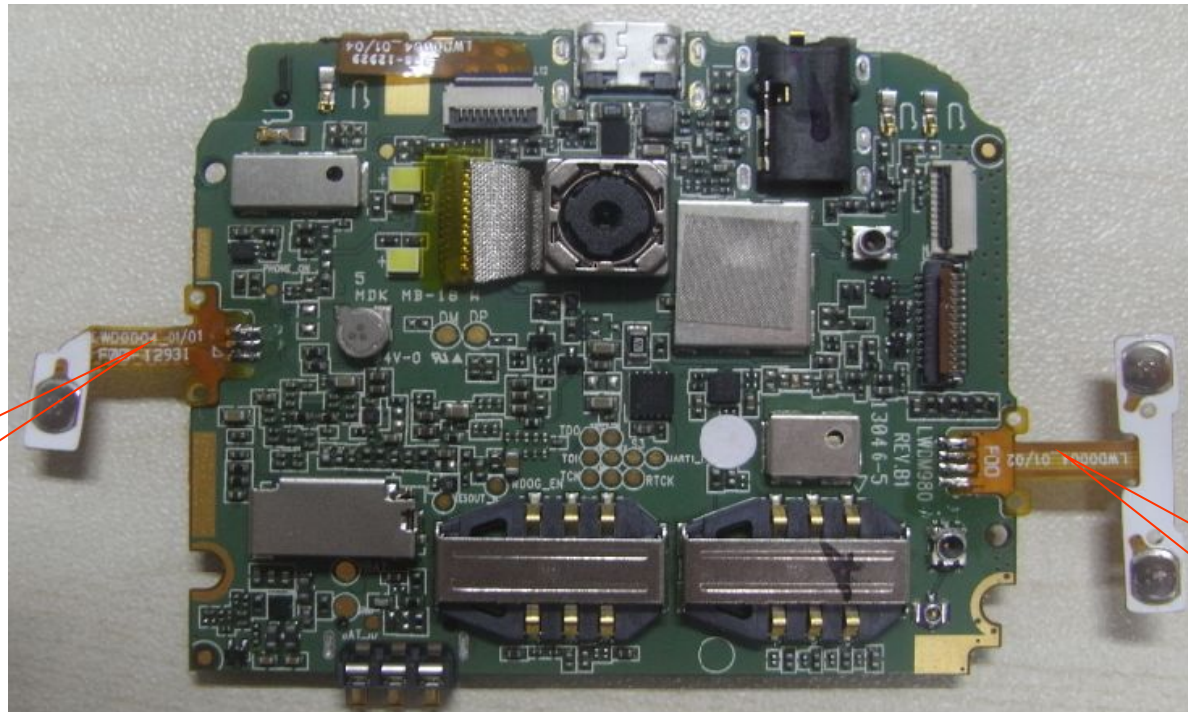
1.2M cam.

Fig.8

Disassembly guide

6. Power key FPC & volume key FPC disassembly

remove the power key FPC and volume key FPC with the iron, as the fig.9;



**Power
key FPC**

**Volume
key FPC**

Fig.9

Disassembly guide

7. receiver and speaker disassembly

remove the receiver and speaker, as the FIG.10;

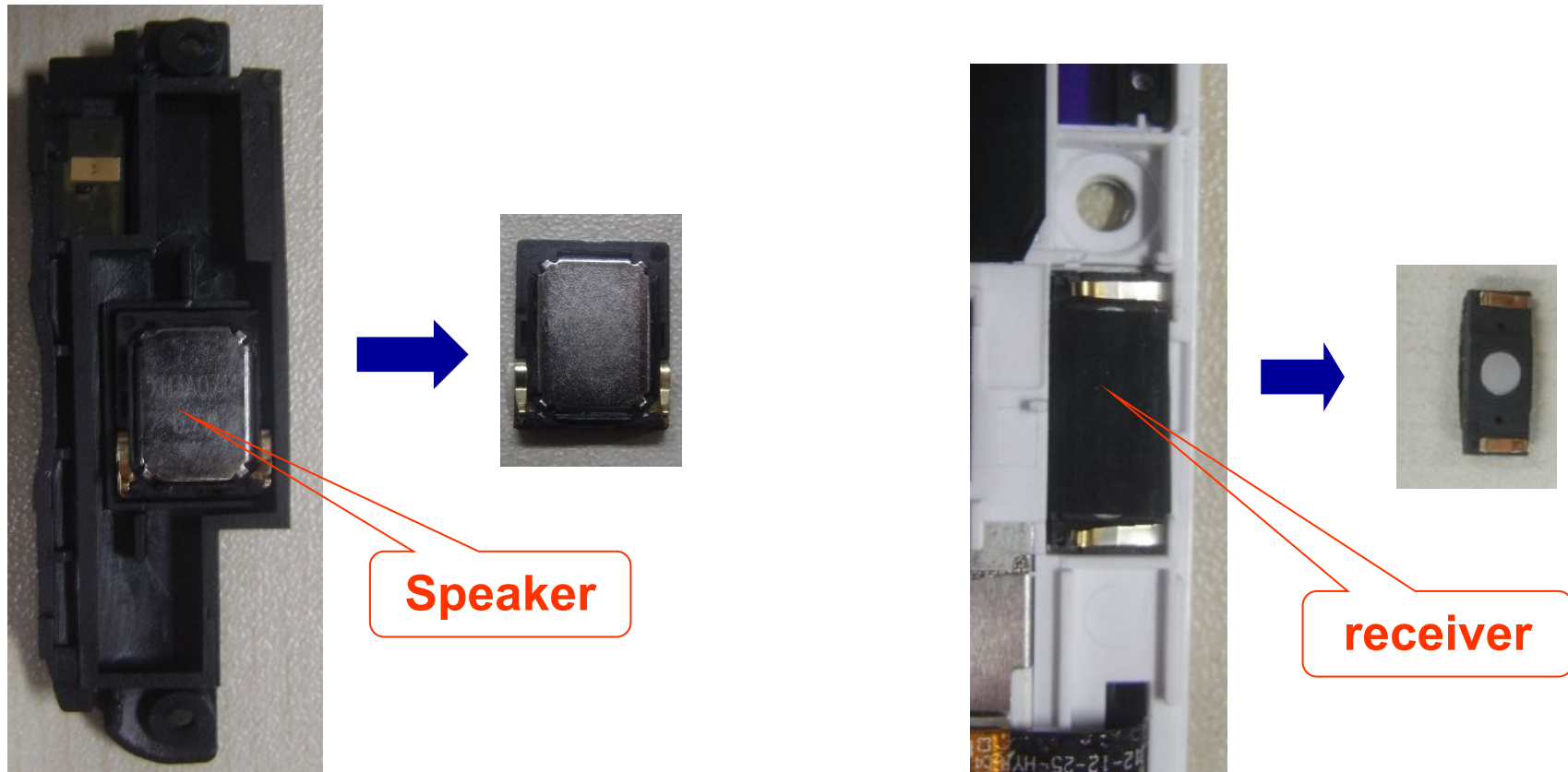


Fig.10

Disassembly guide

8. Sub PCBA disassembly

remove two screws and the sub PCBA and Support for GSM antenna from the , as the fig.12;

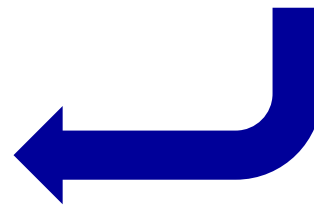
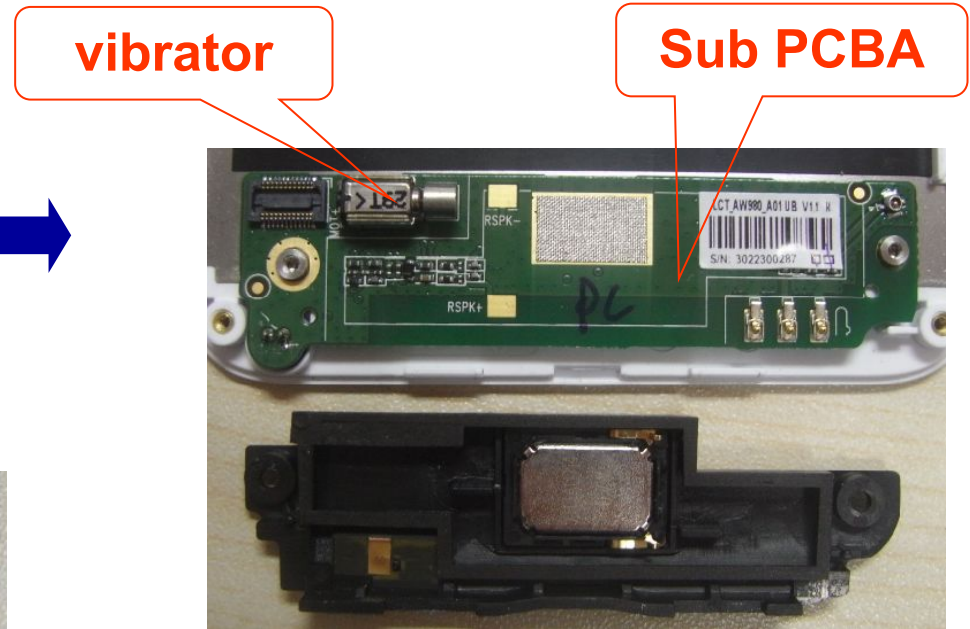


Fig.12

Disassembly guide

10.MIC disassembly

Remove MIC, as the fig.13;

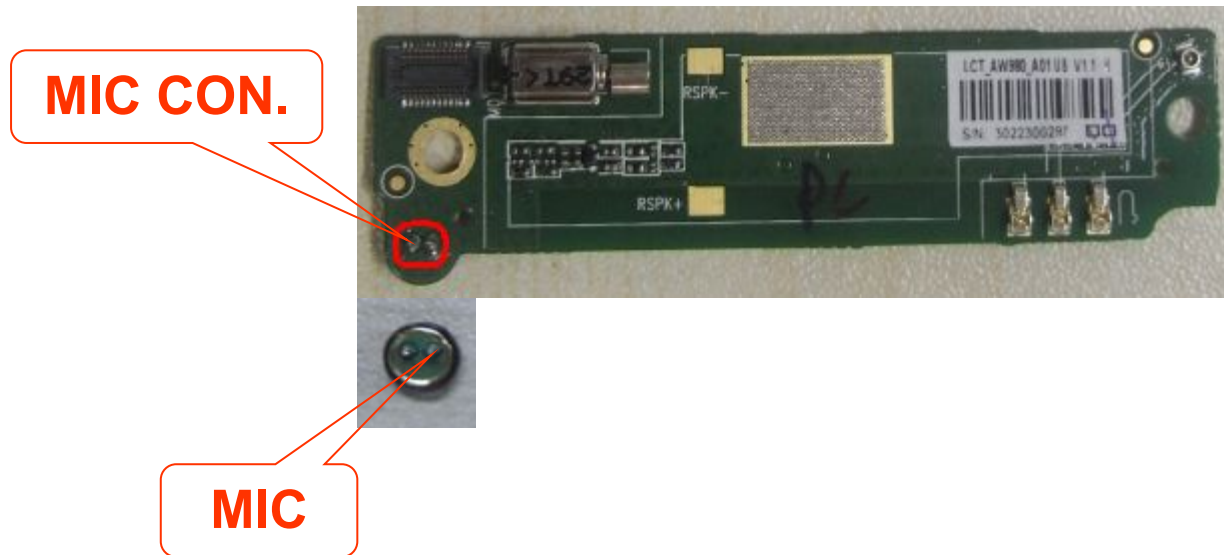


Fig.13

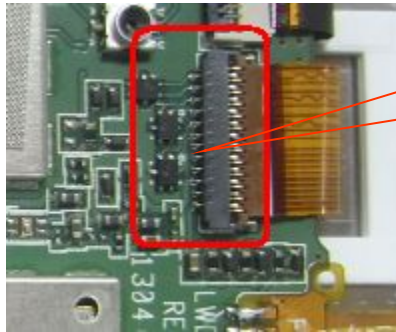
Structure parts diagram



Repairing guide

1. LCD

- a. Check if the SW is correct, otherwise to upgrade the SW;
- b. Check the LCD if is ok, otherwise change a new LCD;
- c. If that the LCD loose, re-assemble the LCD and test;
- d. Checking the LCD connector if is ok, otherwise re-solder it or change a new one;
- e. Checking the circuit around the LCD connector.



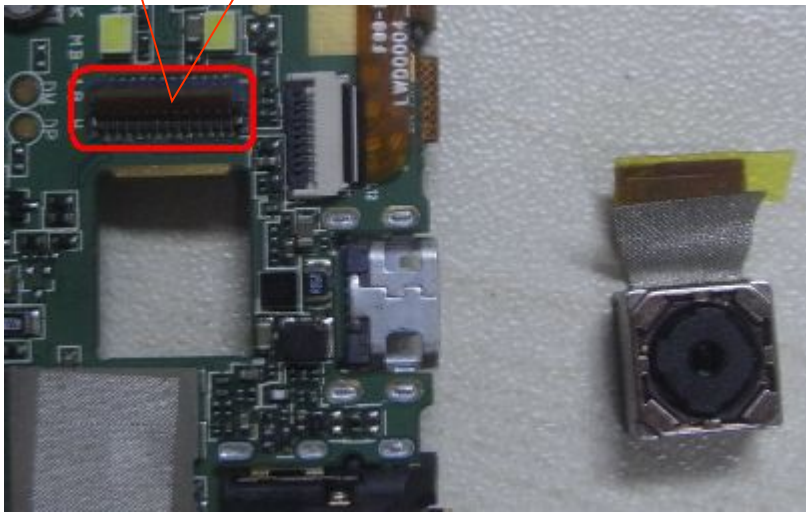
**LCD
connector**

Repairing guide

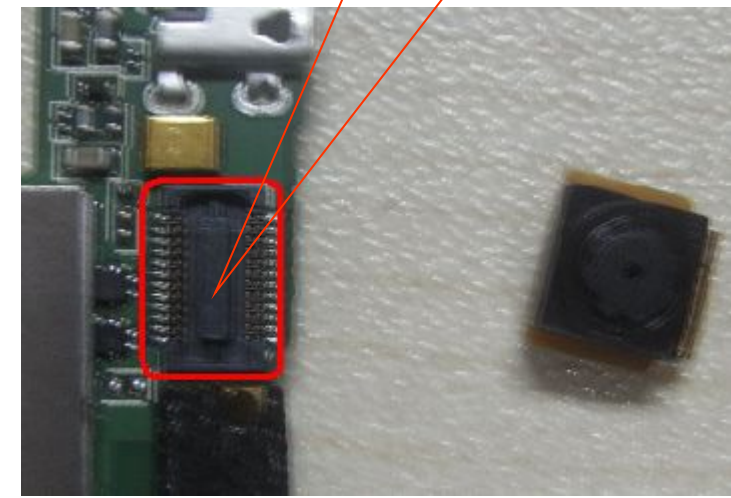
2. Camera

- a. Checking the camera is assemble ok, re-assemble the camera and test;
- b. Using the good camera to do cross test, it can check if the camera is ok;
- c. Checking the camera connector if is ok as below picture, otherwise to re-solder or change a new one;
- d. Checking the circuit around the camera connector.

Back Camera connector



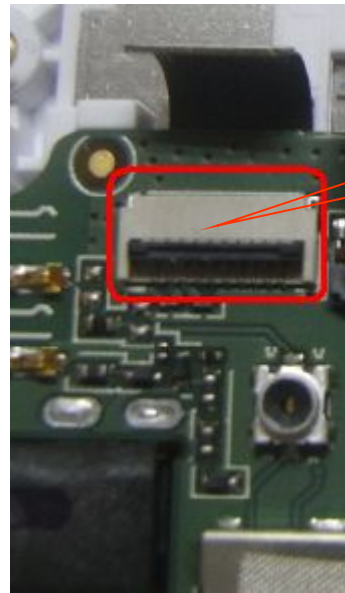
Front Camera connector



Repairing guide

3. TP

- a. Checking the SW and upgrade the SW;
- b. Checking the FPC of TP and re-assemble it;
- c. Using the good TP to do cross test;
- d. Checking the TP connector, otherwise re-solder or change a new one;
- e. Checking the circuit around the TP connector.

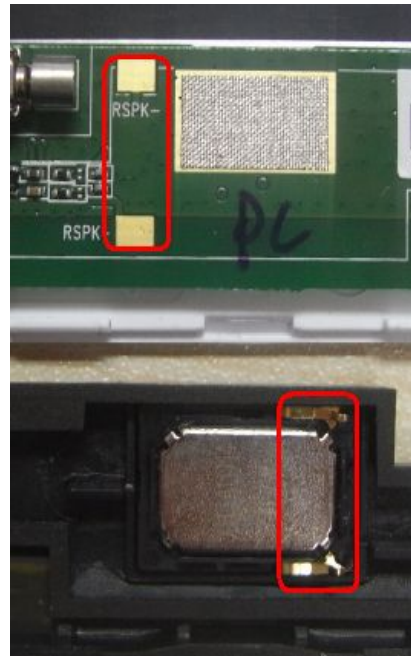


TP Connector

Repairing guide

4.Ring

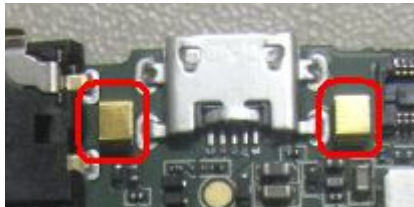
- a. Checking the shrapnel of speaker if is ok;
- b. Checking the resistance of speaker if is ok, otherwise to change a new one;
- c. Checking the FPC if is ok;
- d. Checking SPK-FPC if connector with sub-board is ok.



Repairing guide

5.receiver

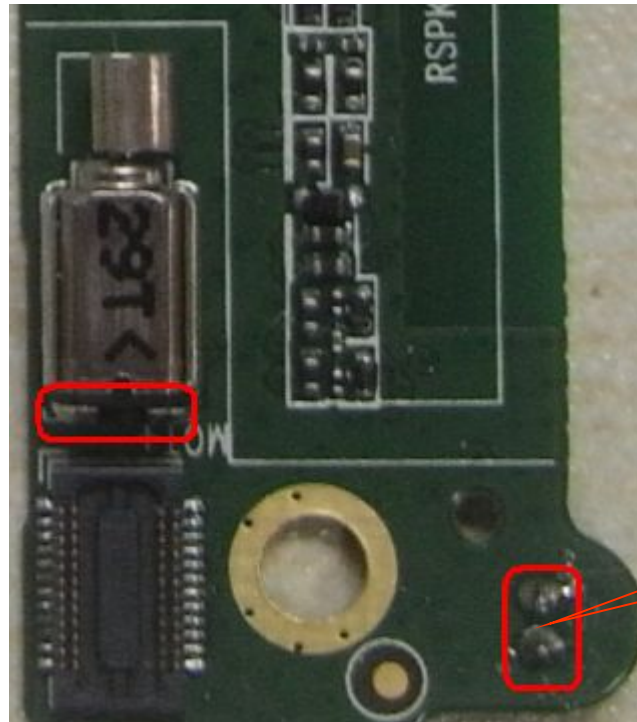
- a. Checking the shrapnel of receiver if is ok;
- b. Checking the resistance of receiver if is ok, otherwise to change a new one;
- c. Checking the connector point on the main board if is ok, as below picture;
- c. Checking the receiver circuit if is ok.



Repairing guide

6.MIC and Vibrator

- a. Checking the MIC and Vibrator is cold soldering, re-solder it;
- b. Change the MIC and Vibrator;
- c. Checking the circuit of MIC and Vibrator;
- d. Checking the FPC if connect ok.

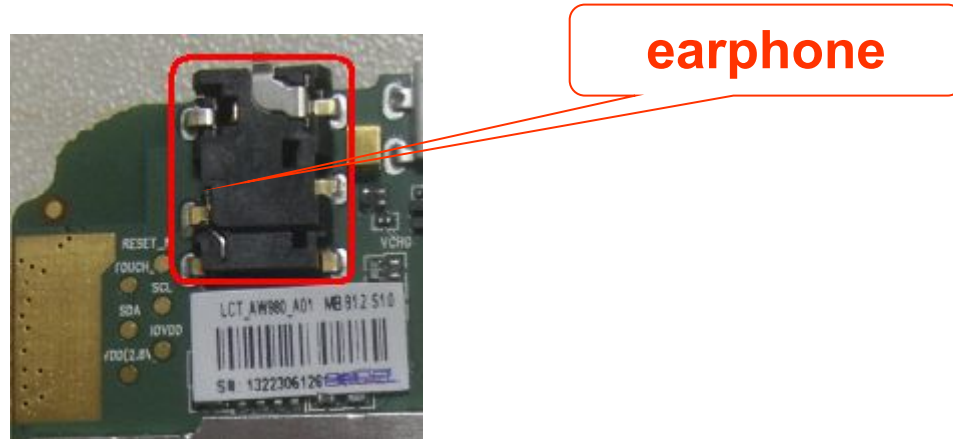


MIC CON.

Repairing guide

7. Earphone

- a. Checking the shrapnel of earphone if is ok;
- b. Checking the connector point on the main board if is ok, as below picture;
- c. Change earphone connector;
- c. Checking the circuit of earphone.

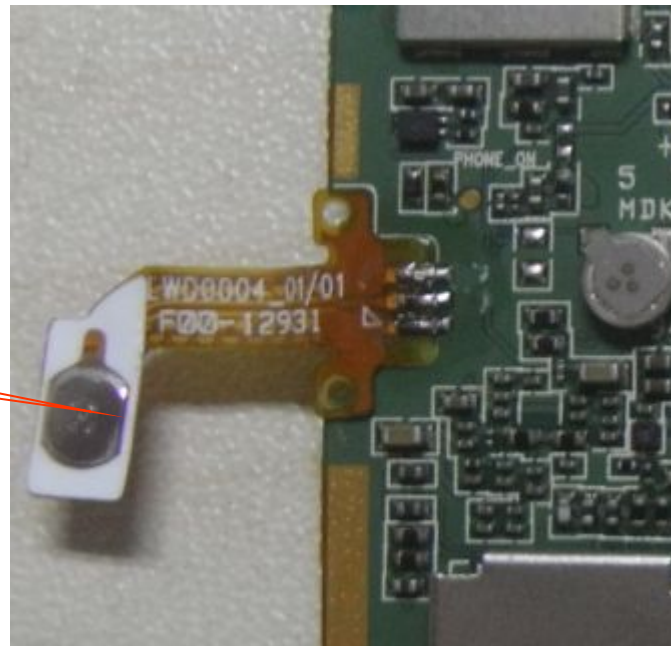


Repairing guide

8.No Power On

- a. Checking the voltage of battery if is 3.8-4.2V and connect ok;
- b. Upgrade the SW;
- b. Checking the power on key and circuit around it.;

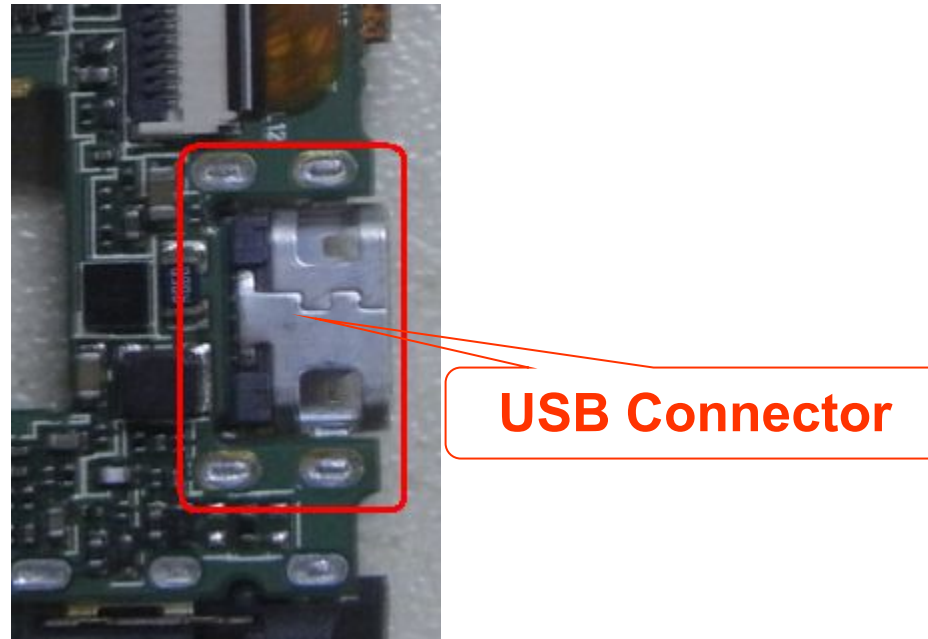
Power On



Repairing guide

9.No charging

- a. Checking the voltage of battery if is over 3.4V;
- b. Checking the charger and USB cable if is ok;
- c. Checking the USB connector and circuit if is ok.

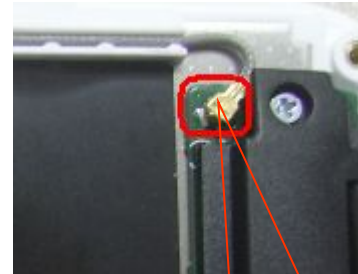
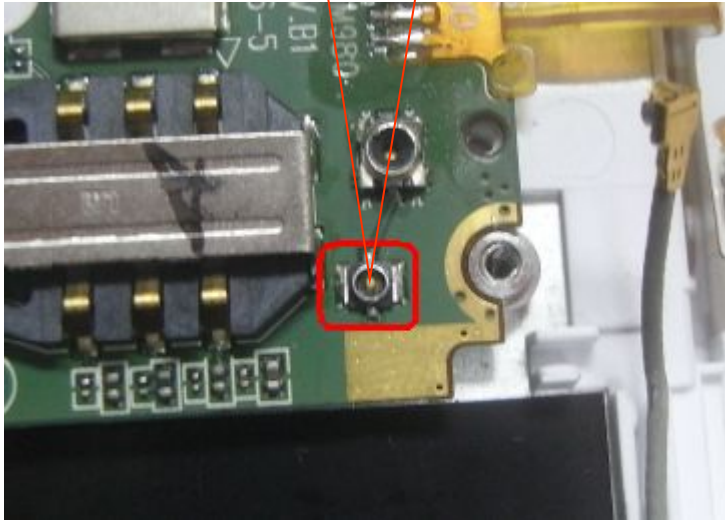


Repairing guide

11.Signal

- a. Checking RF line if that is broken;
- b. Checking RF line assemble if is ok;

RF connector



**Sub-board RF
connector**

End

Q&A