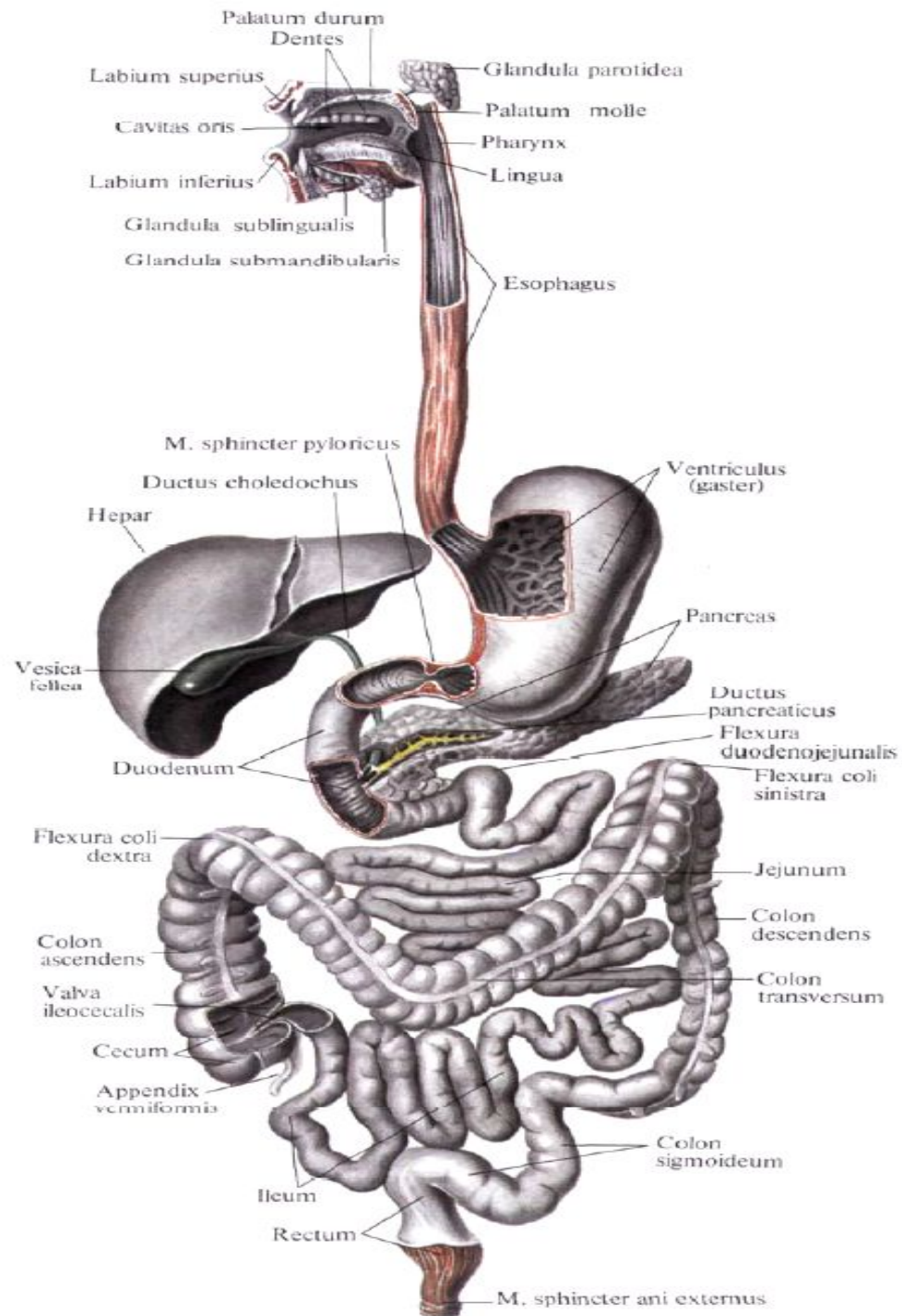
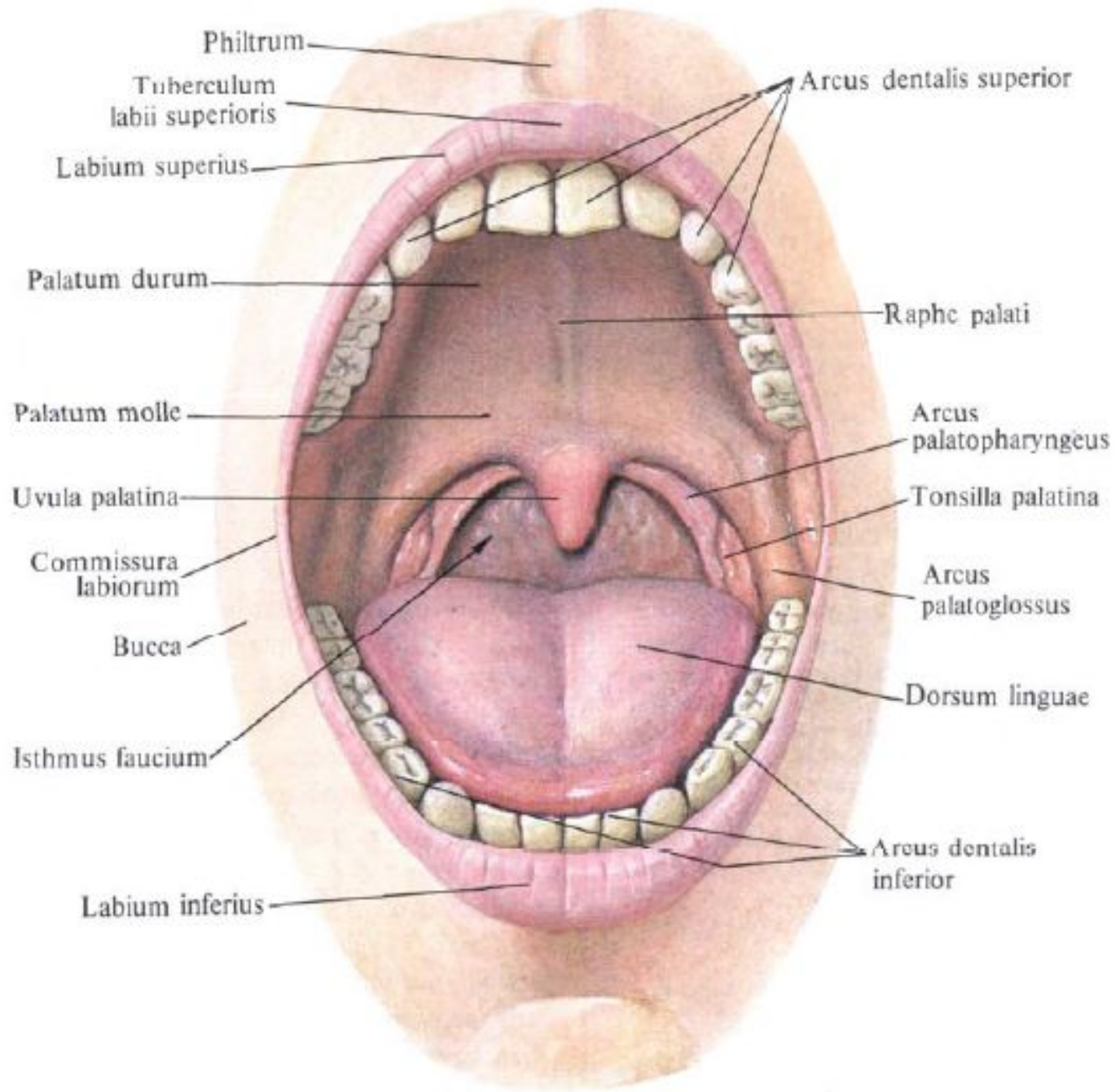


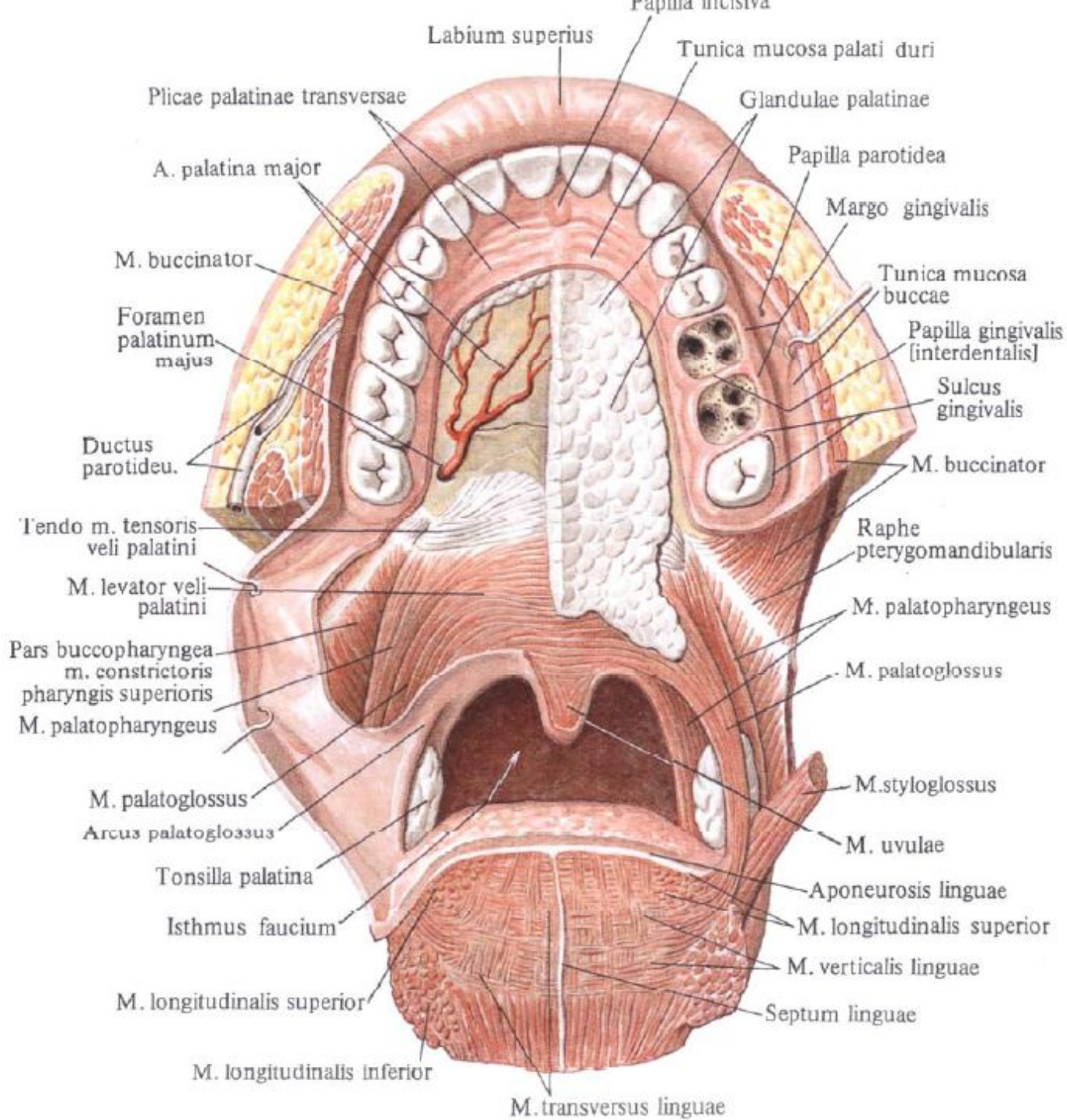
# Пищеварительная система

# Занятие №1

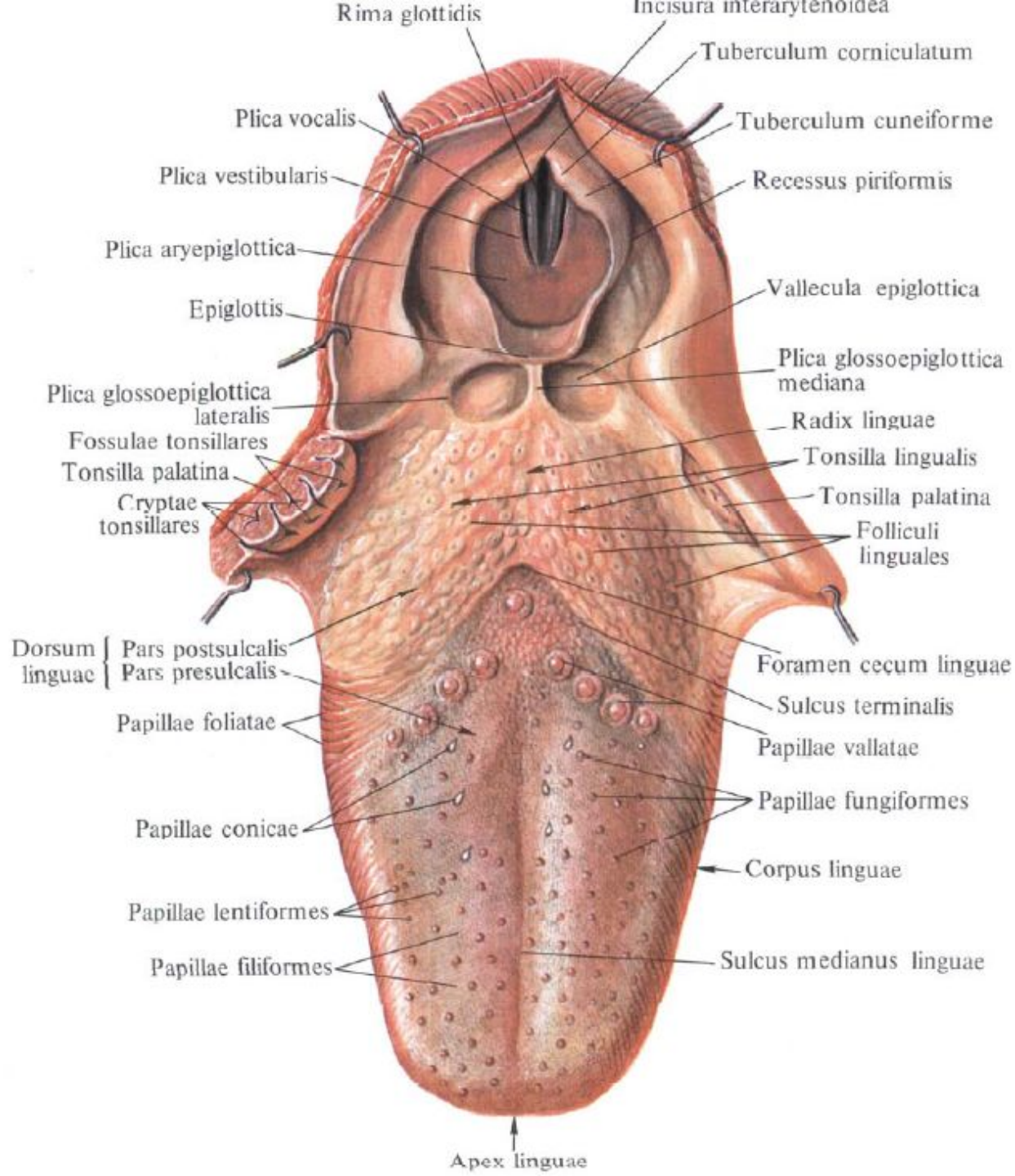
Анатомия органов пищеварения: ротовая полость. Губы, щеки, твердое и мягкое небо, зев, язык.

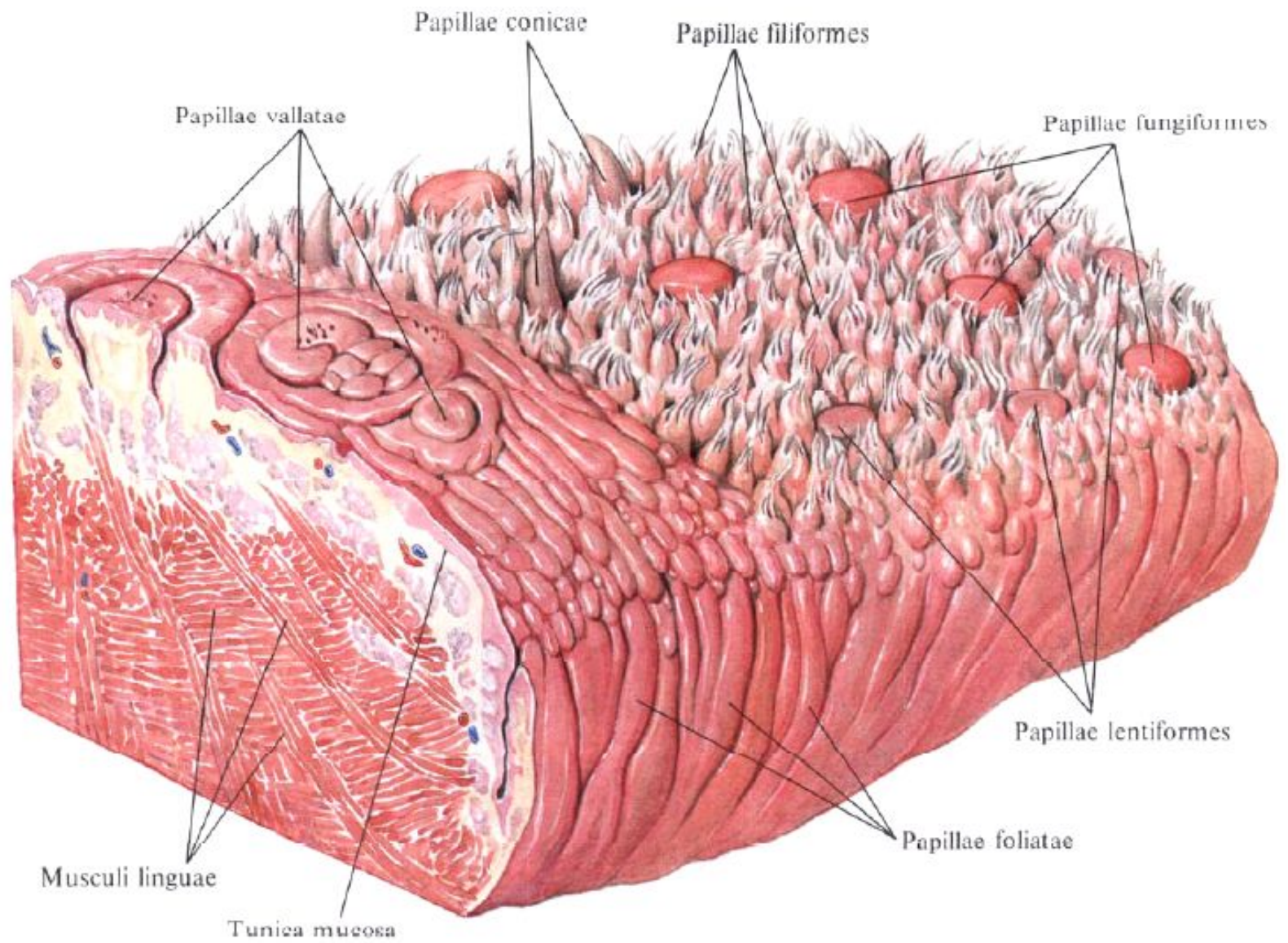




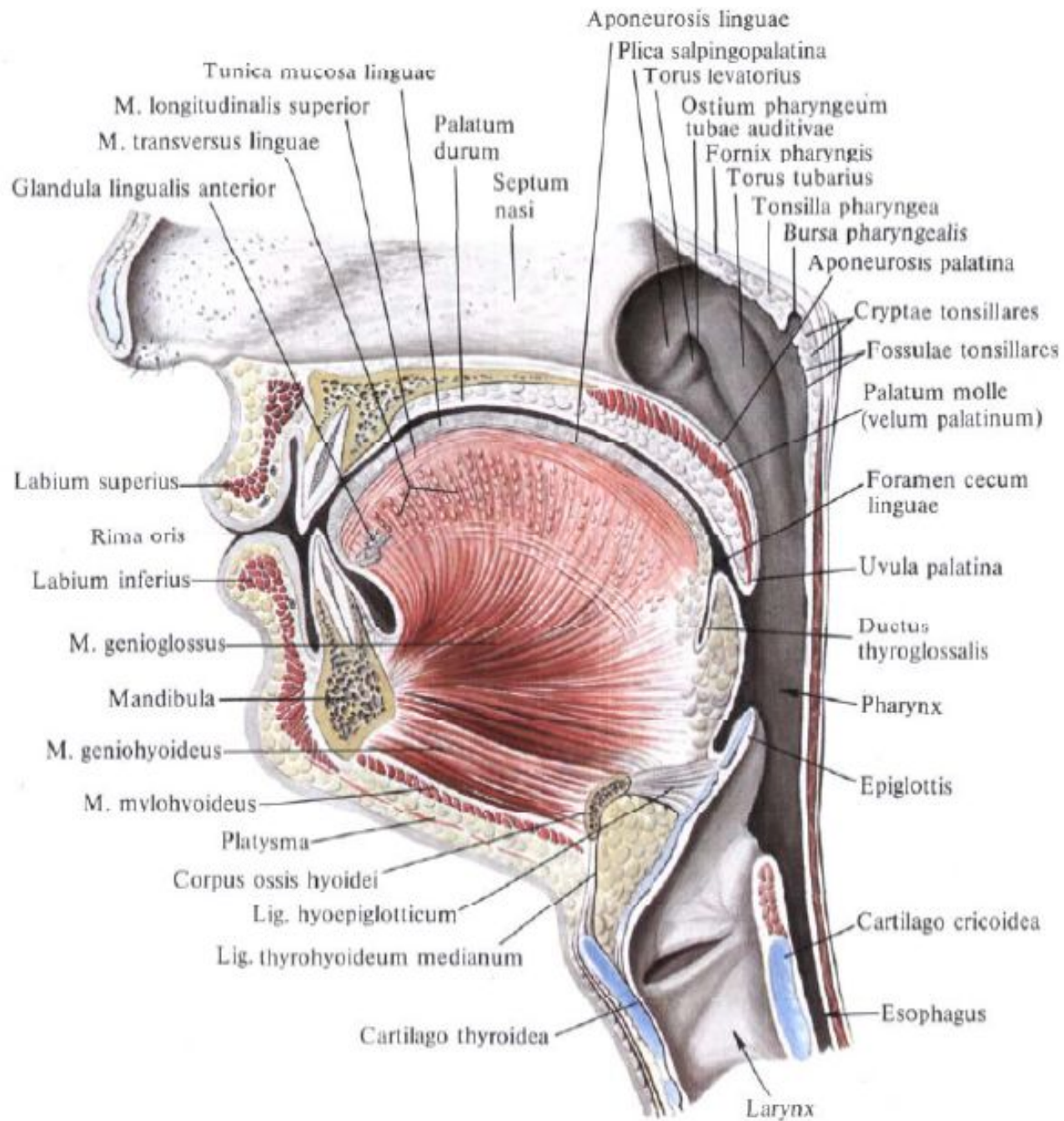








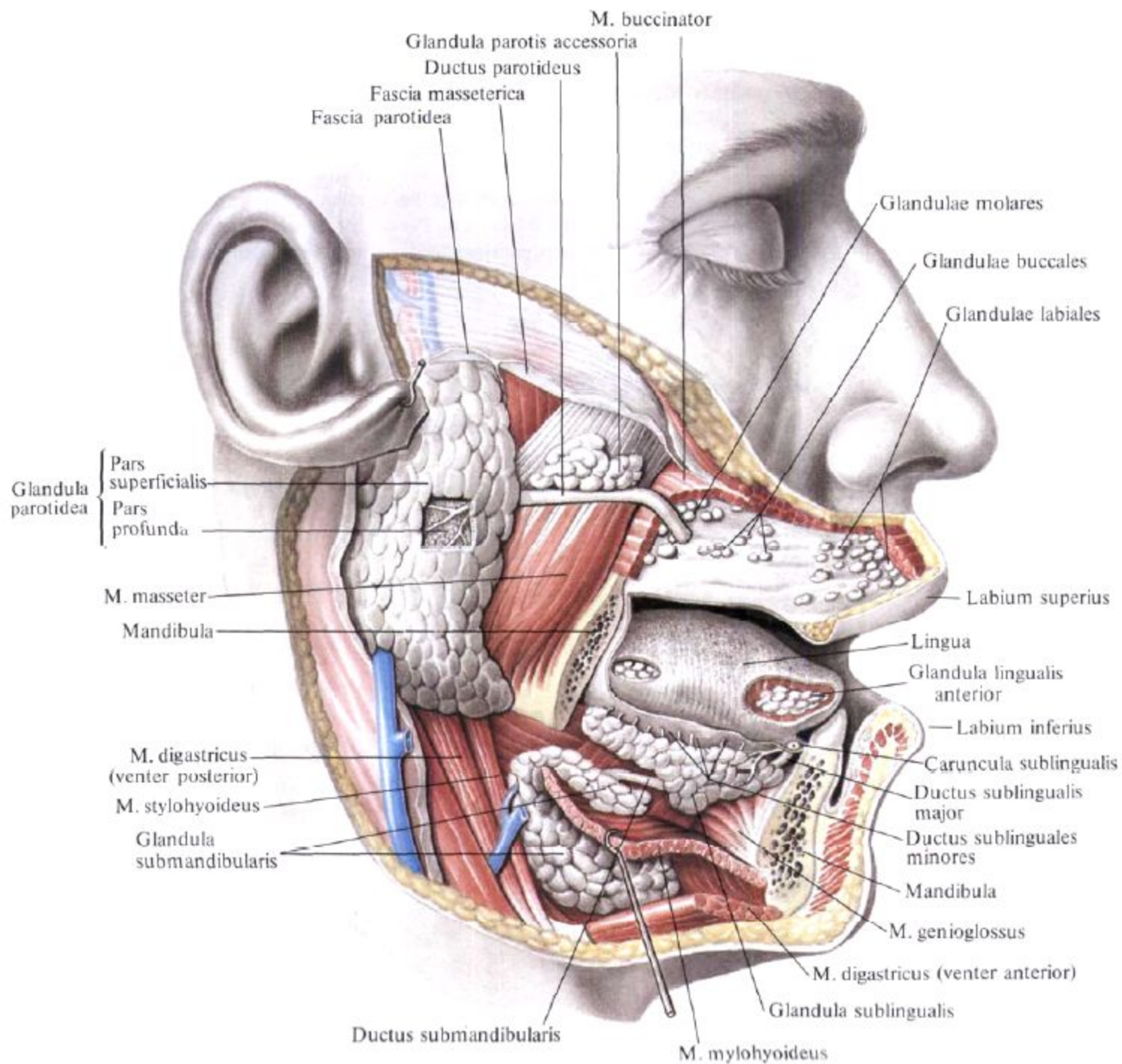


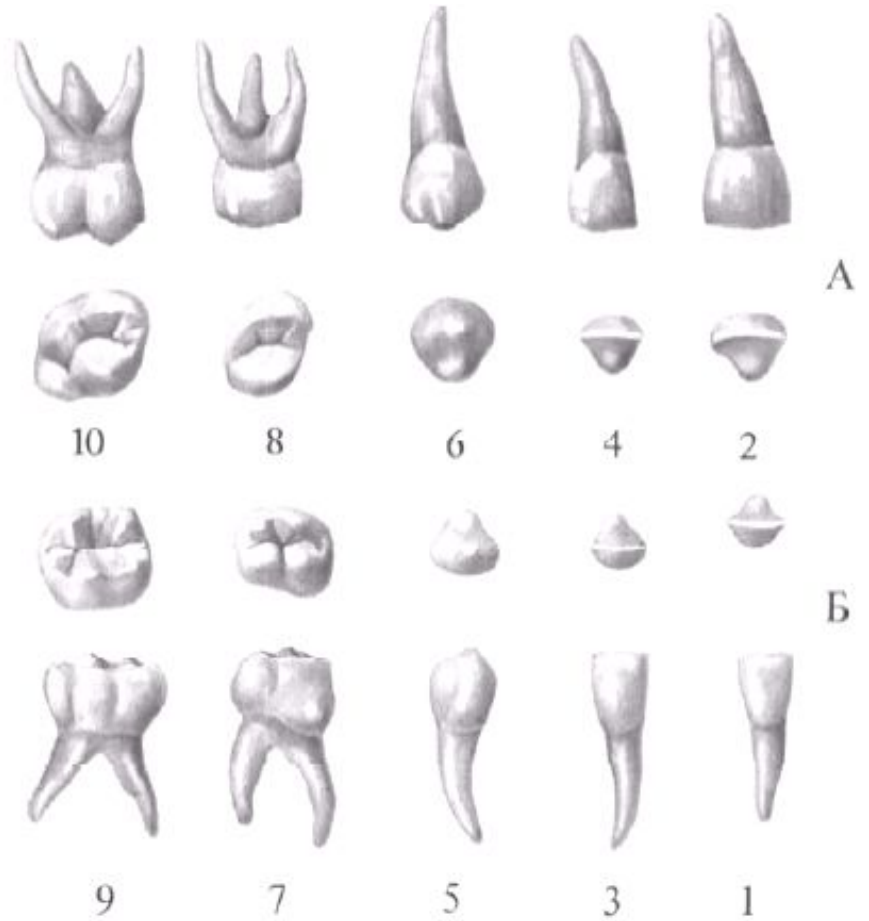
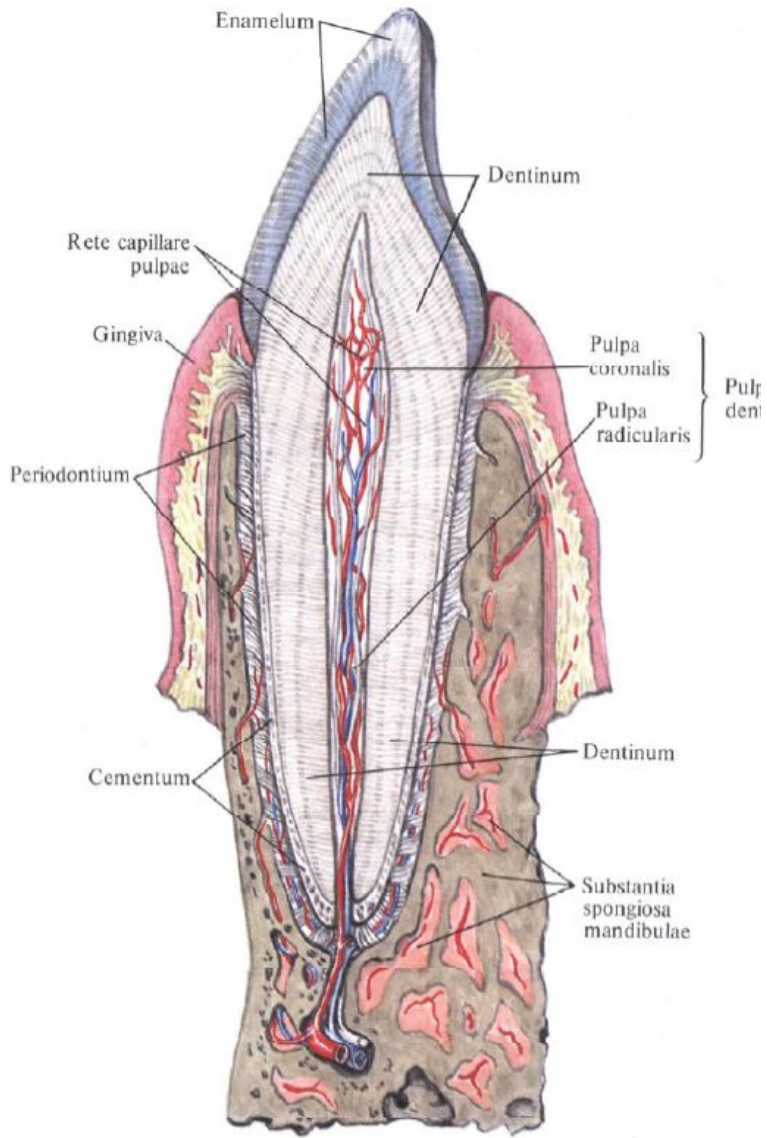




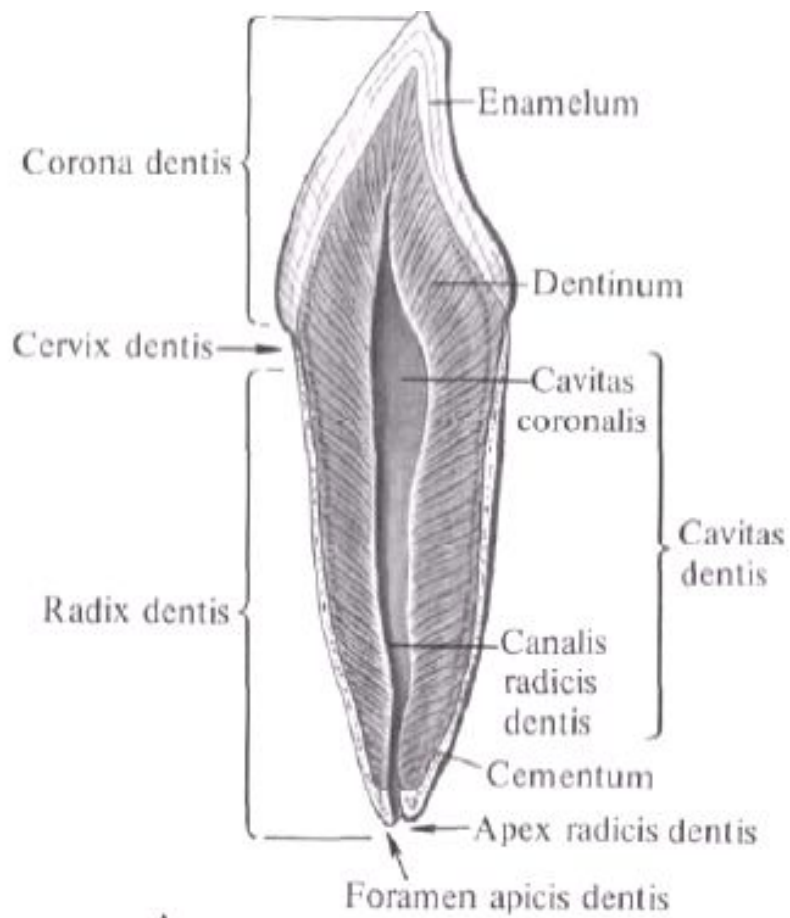
# Занятие №2

Зубы, большие и малые слюнные железы.

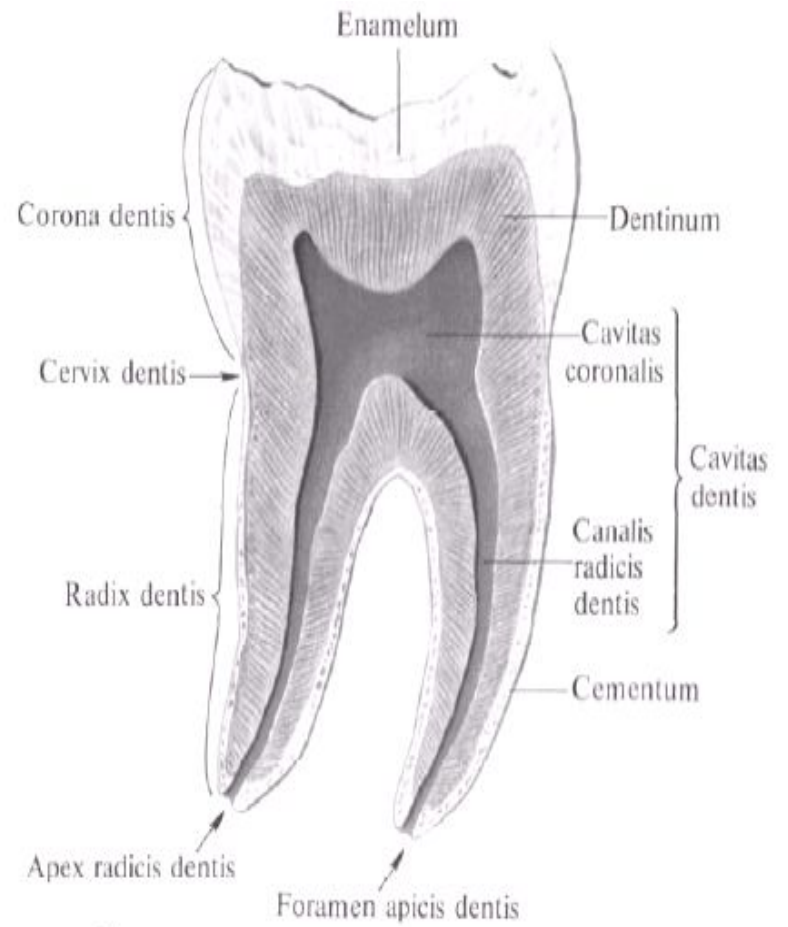








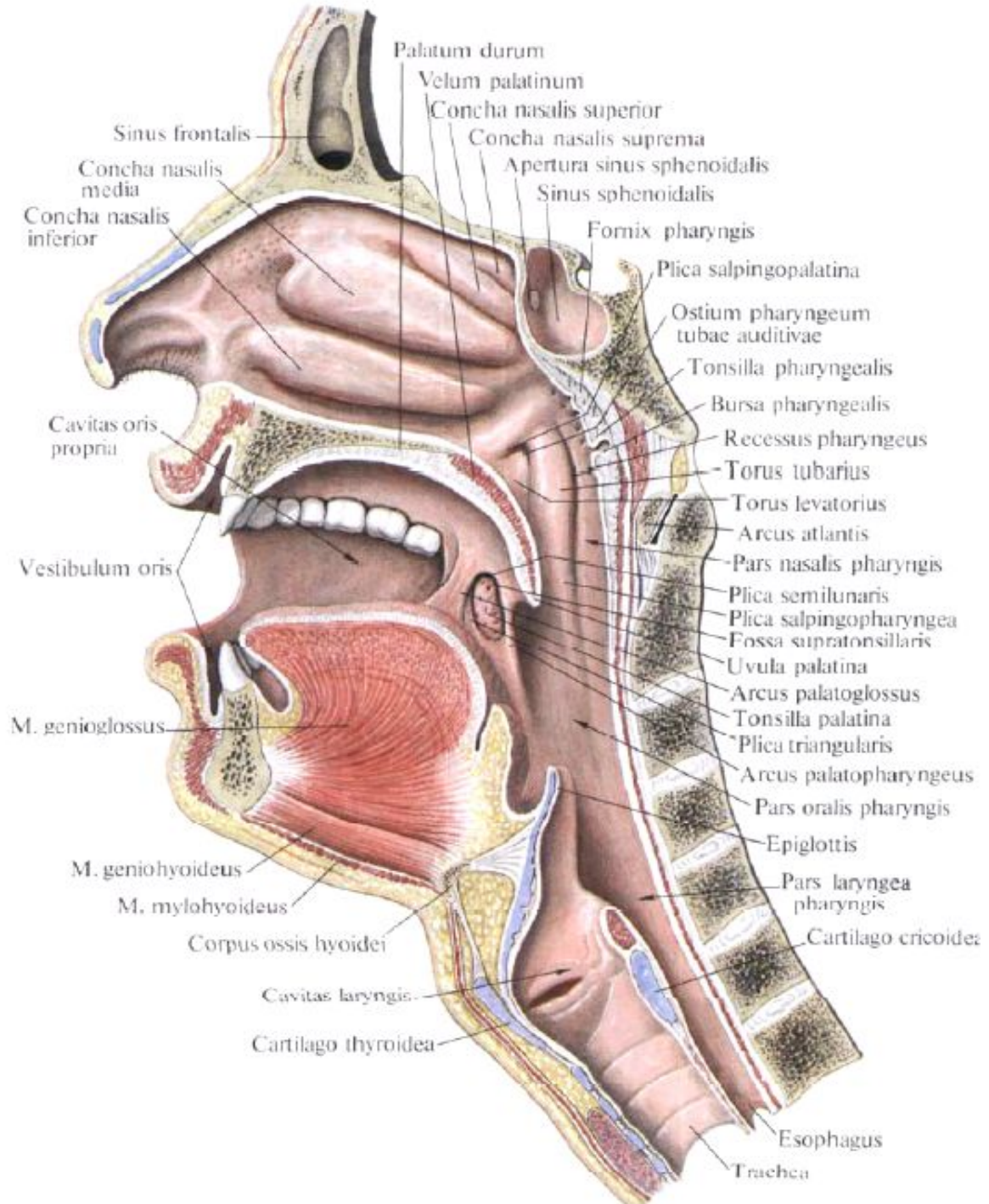
A



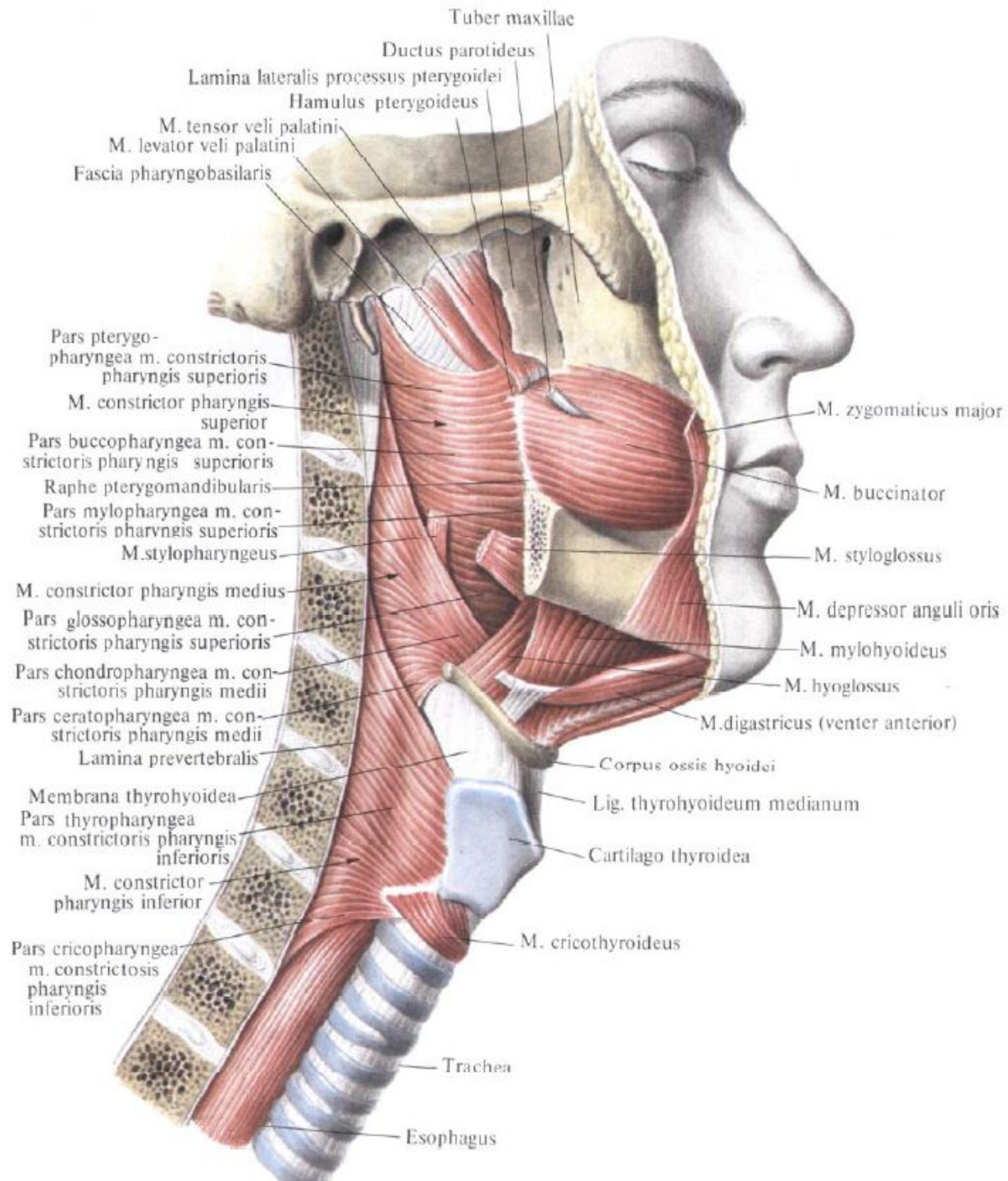
B

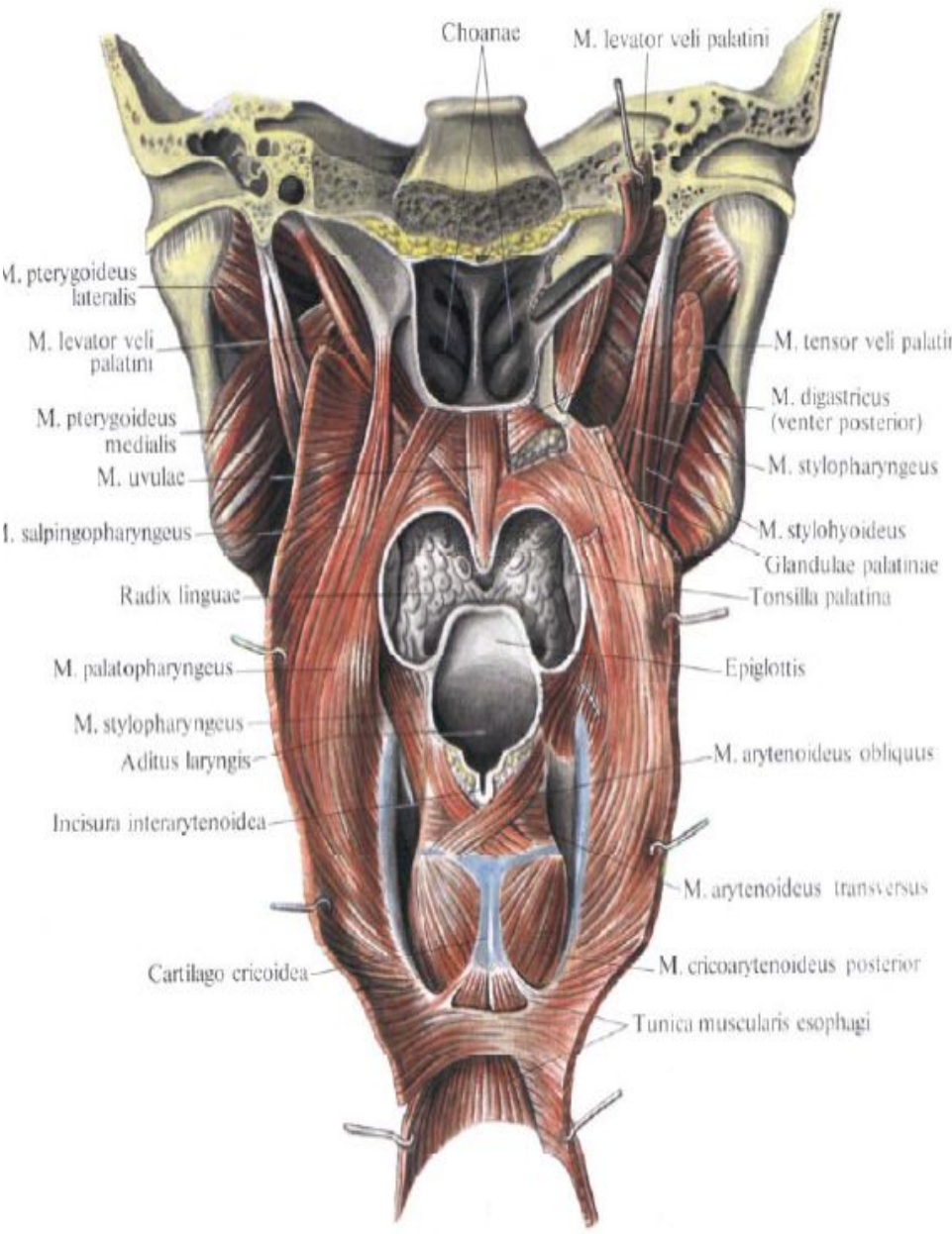
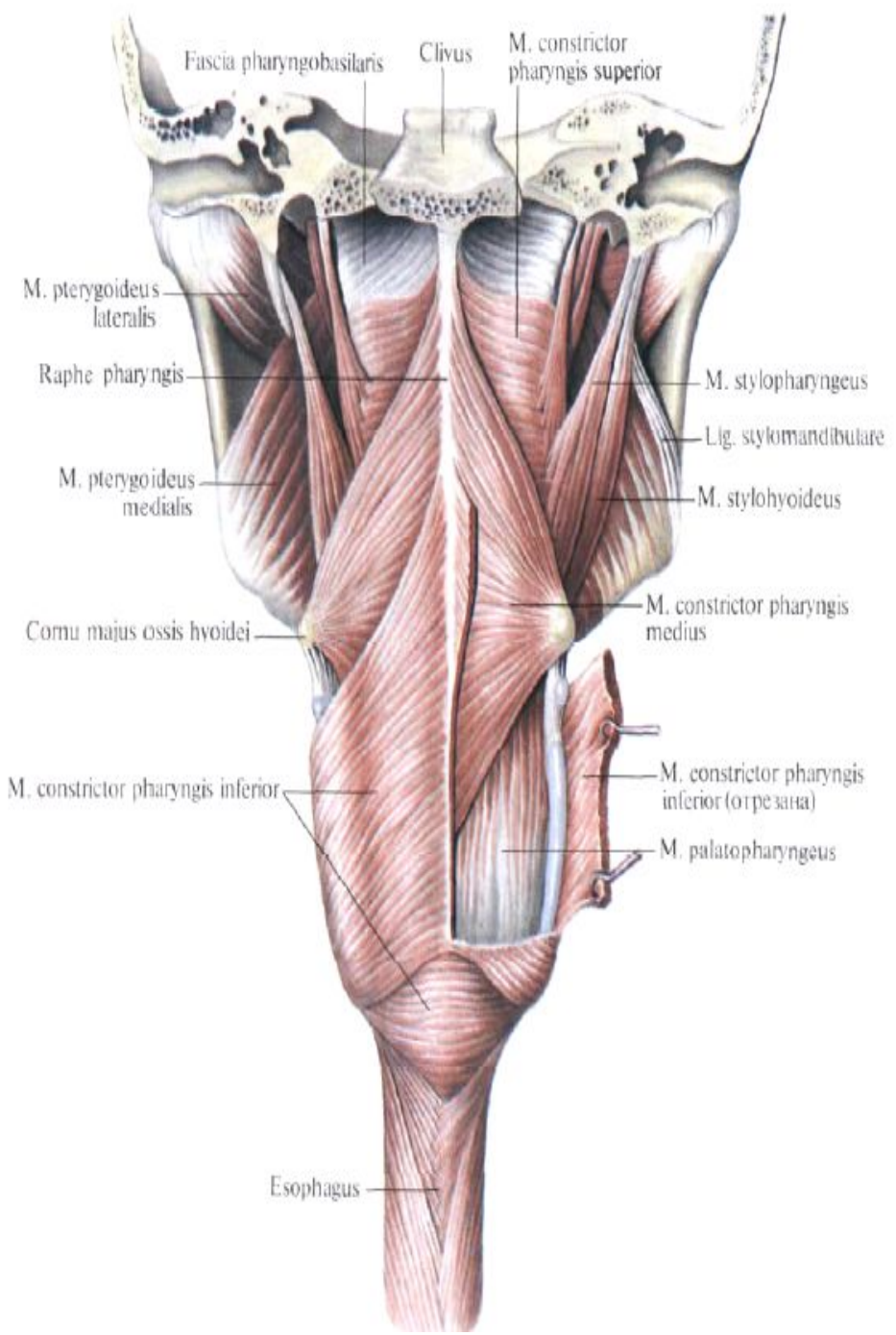
# Занятие №3

Глотка, пищевод. Лимфоидное глоточное кольцо. Анатомия желудка.

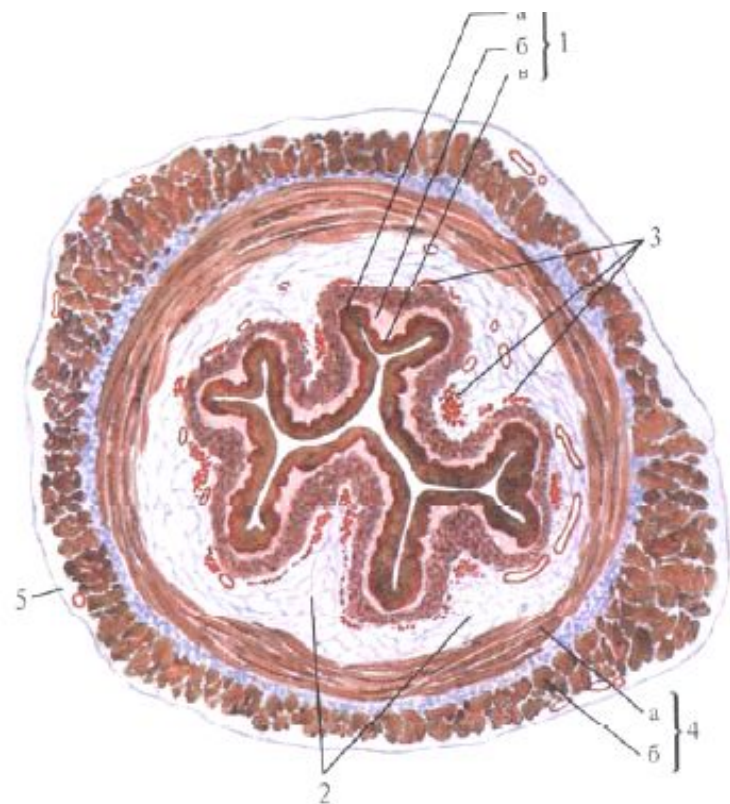
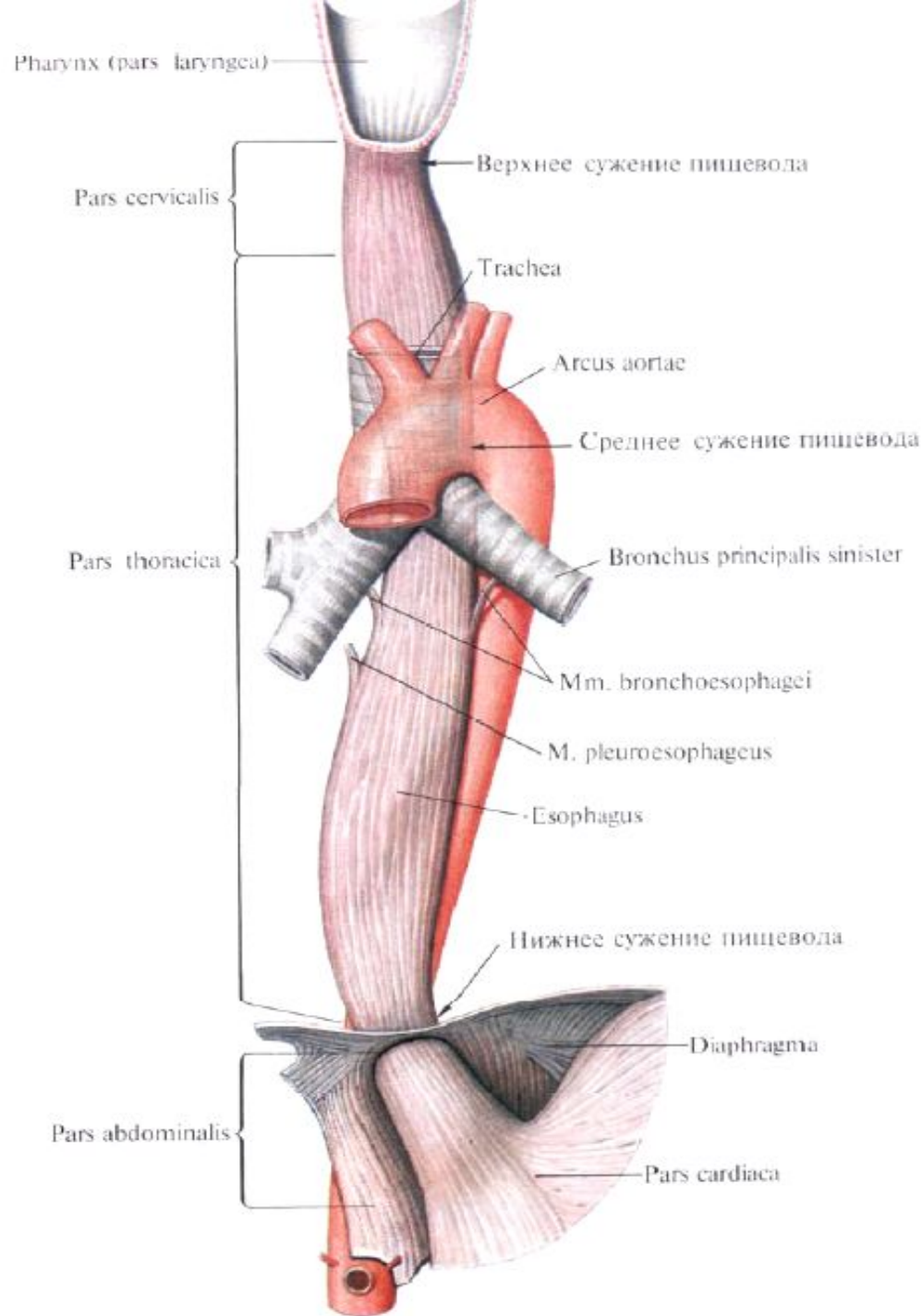






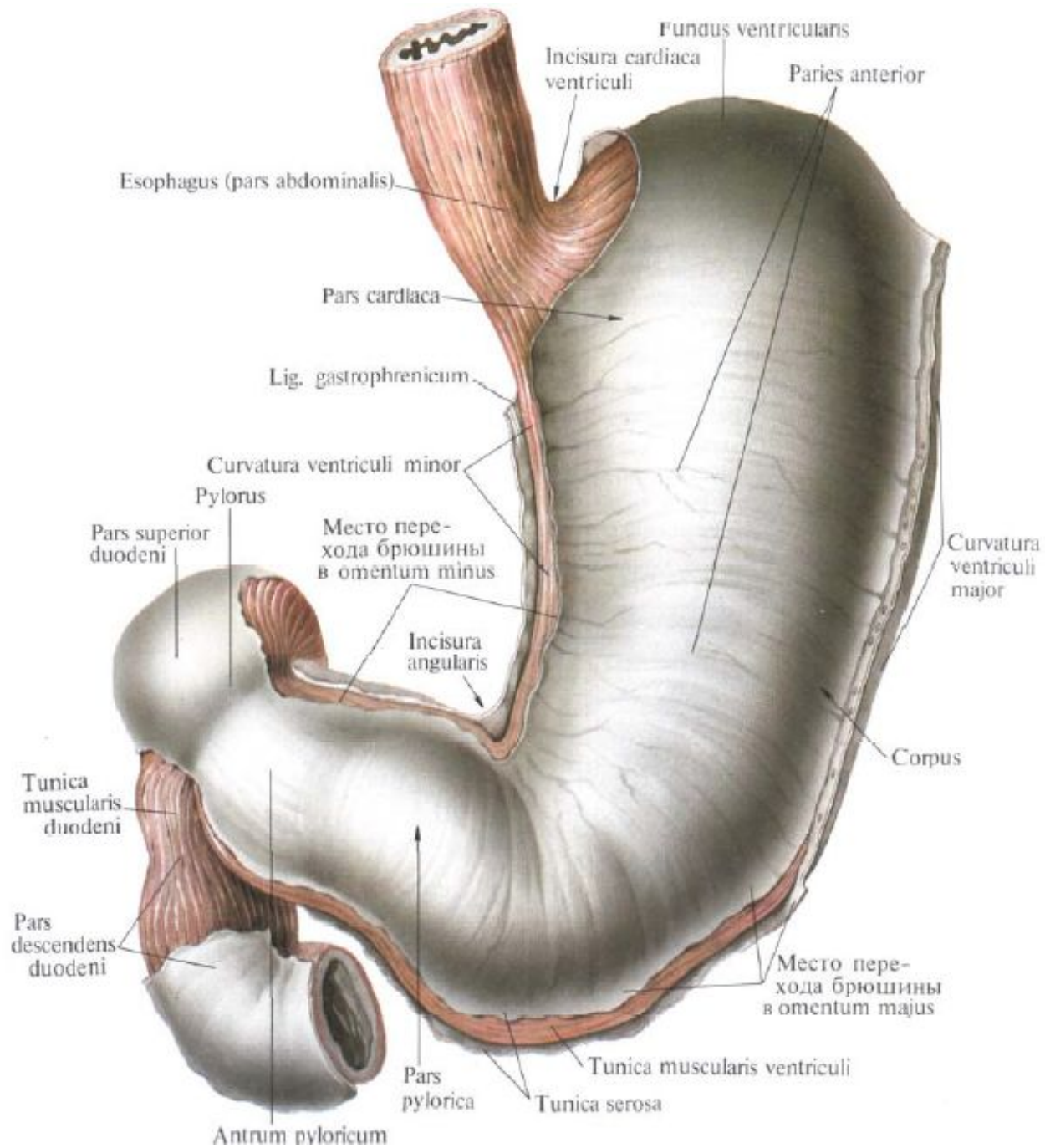


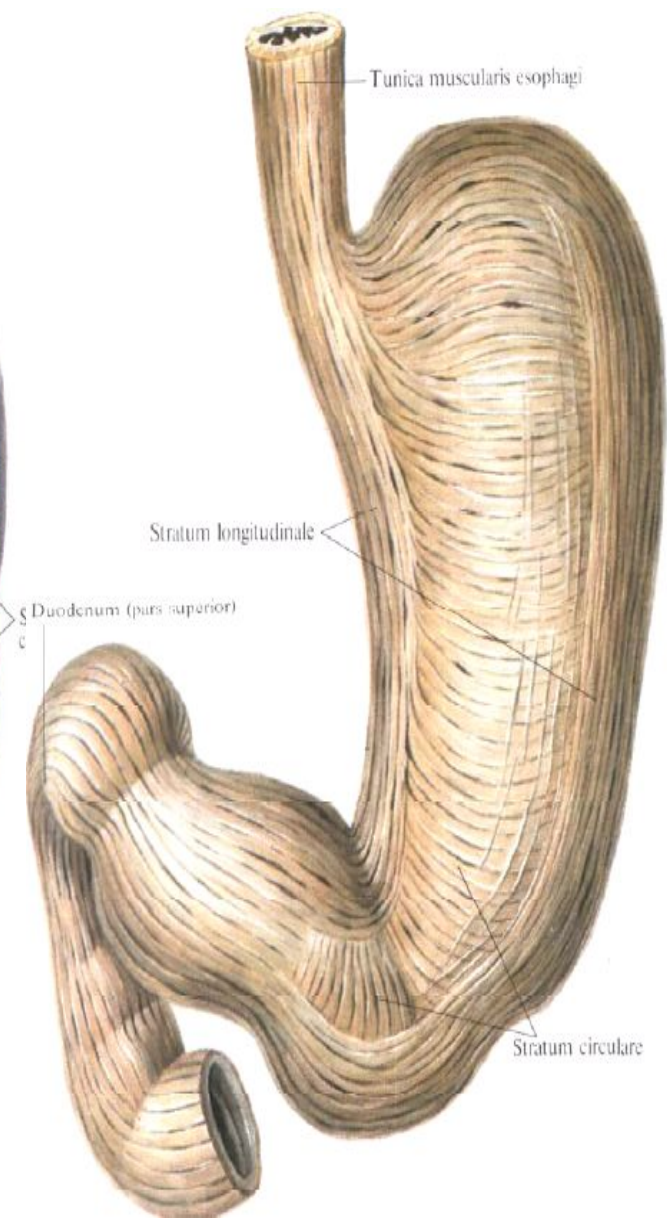
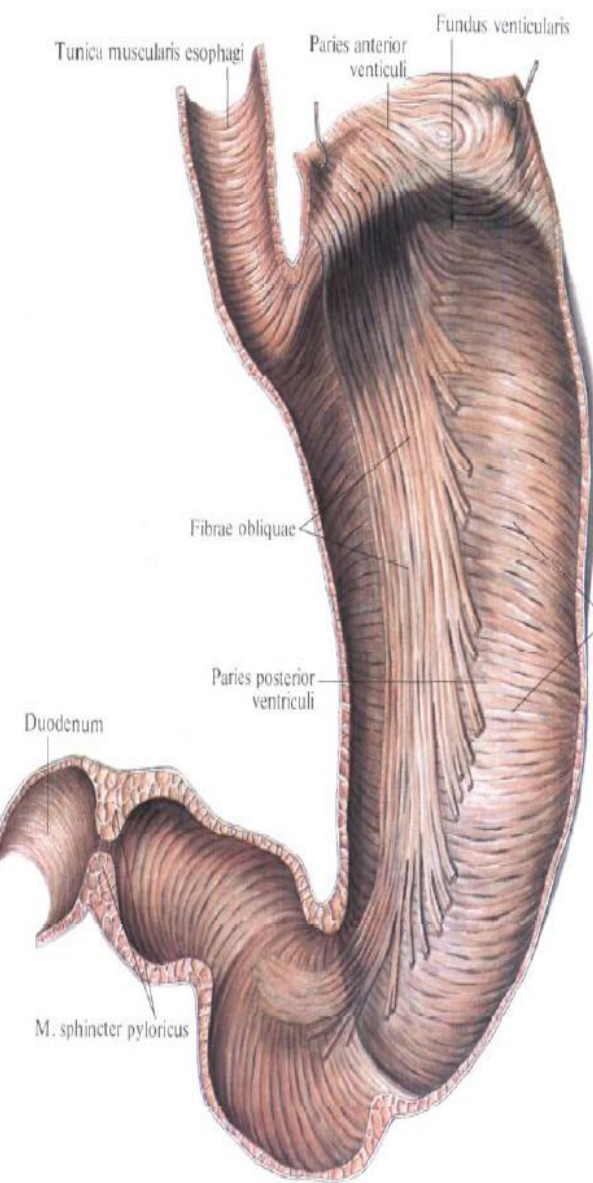
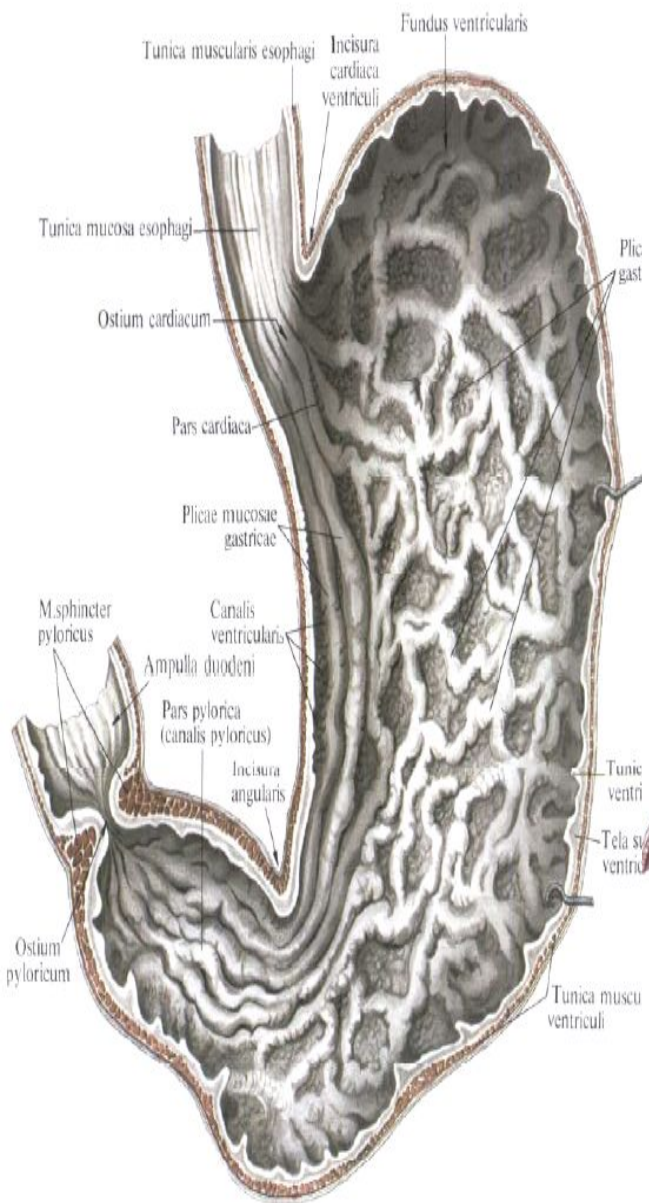




1 – tunica mucosa (a – epithelium, б – lamina muscularis mucosae, в – lamina propria mucosae);  
 2 – tela submucosa; 3 – glandulae esophageae; 4 – tunica muscularis (a – stratum circulare tunicae muscularis, б – stratum longitudinale tunica muscularis); 5 – tunica adventitia.



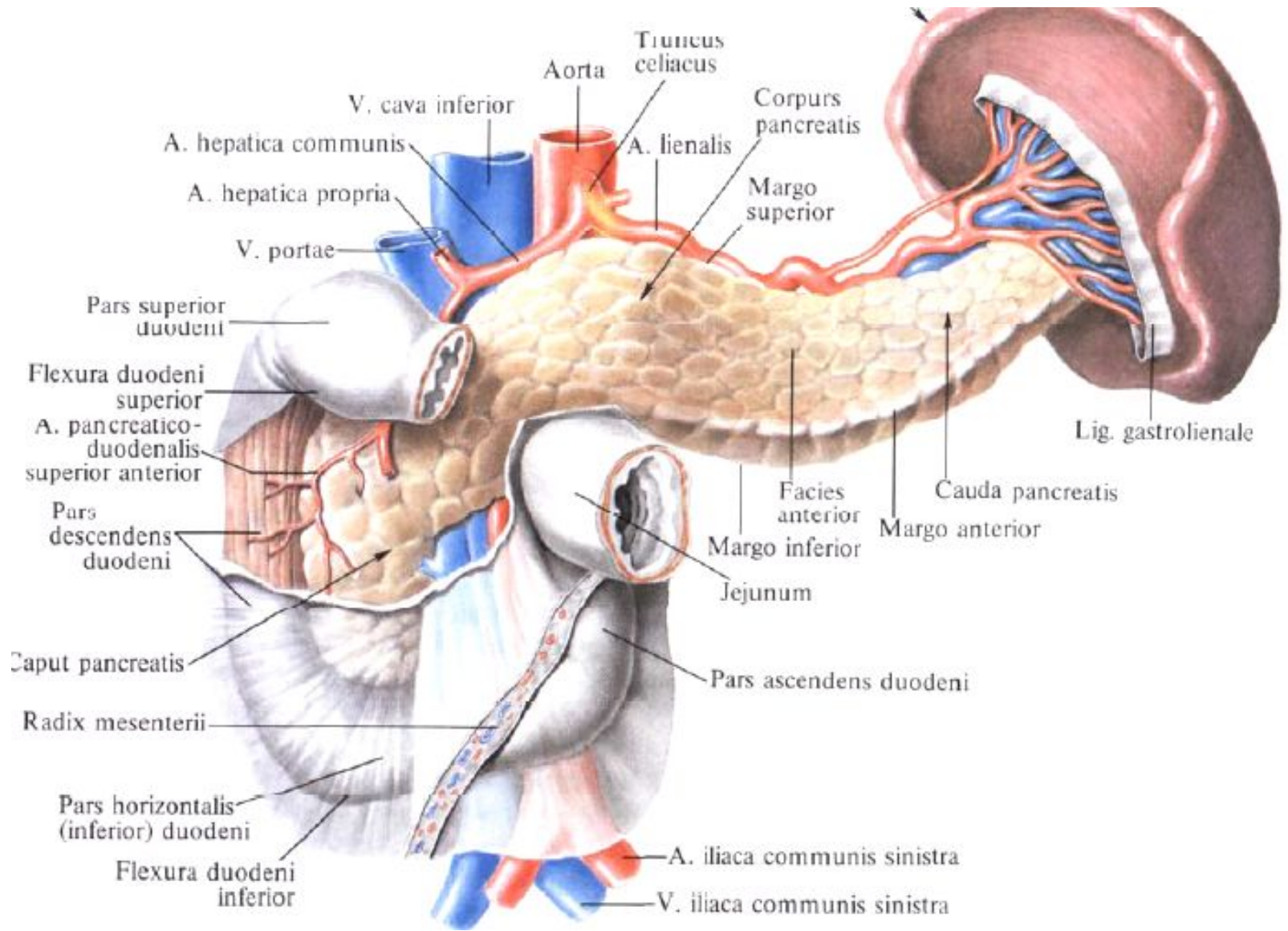


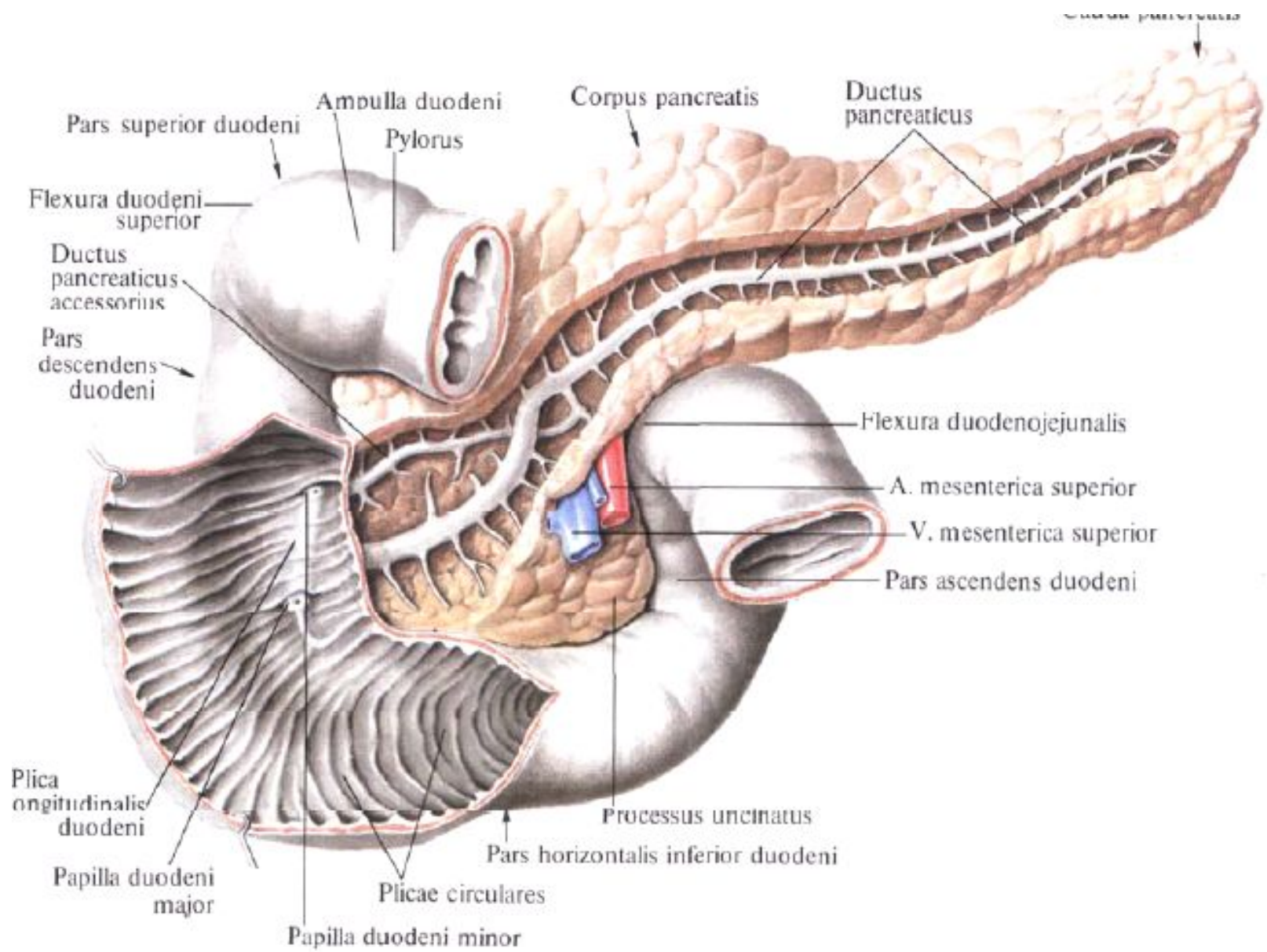


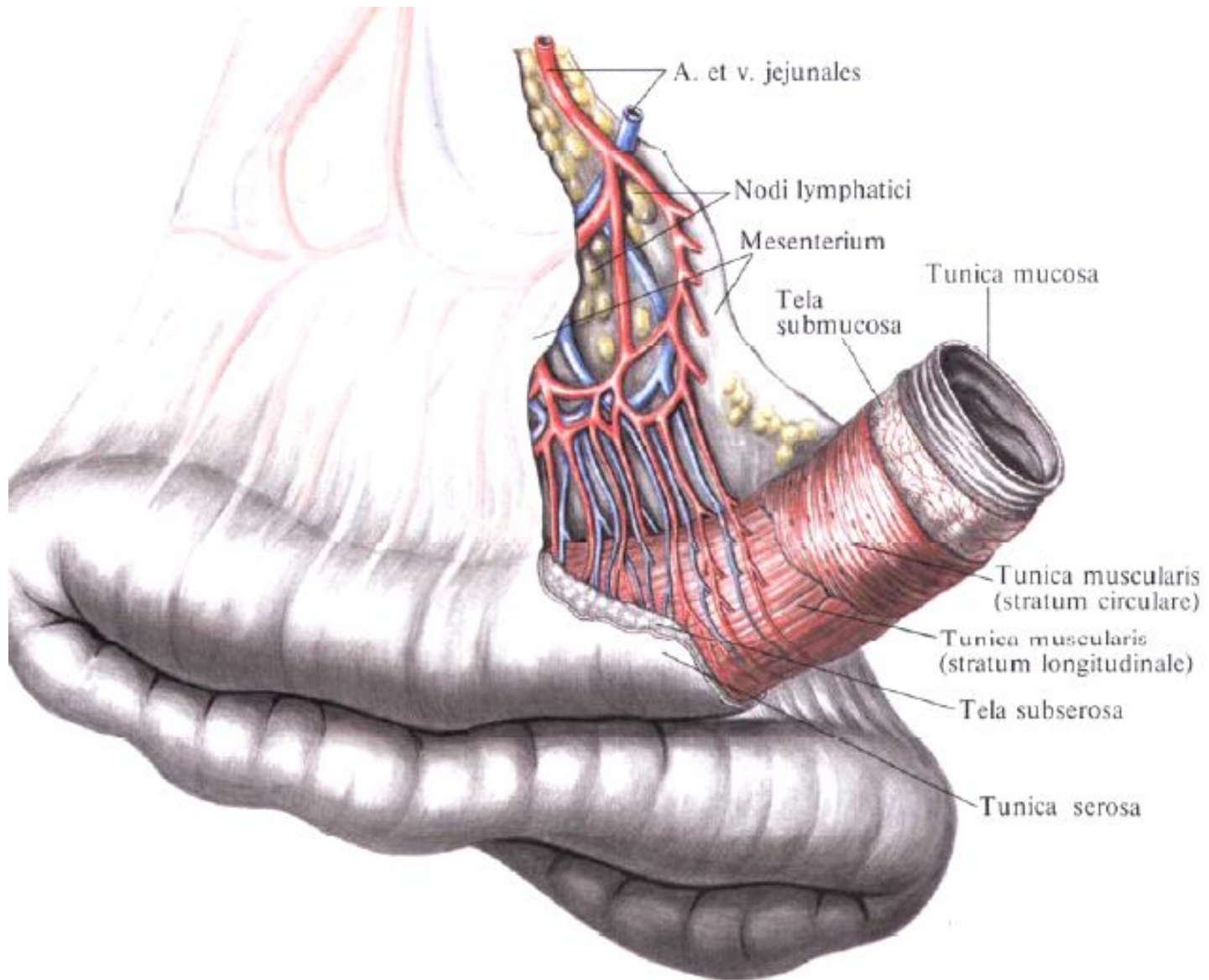
# Занятие №4

Анатомия тонкой и толстой кишки.









A. et v. jejunales

Nodi lymphatici

Mesenterium

Tela submucosa

Tunica mucosa

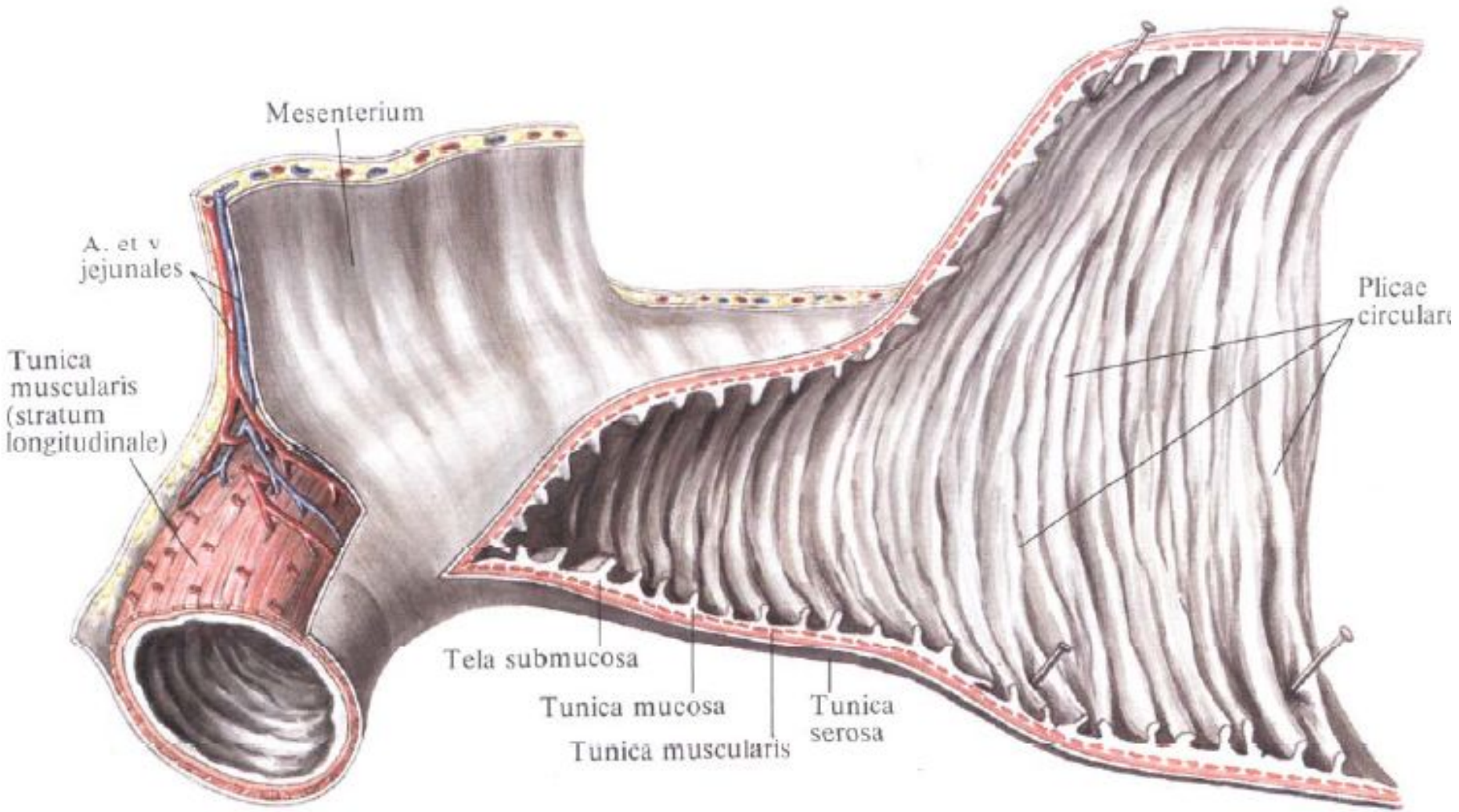
Tunica muscularis (stratum circulare)

Tunica muscularis (stratum longitudinale)

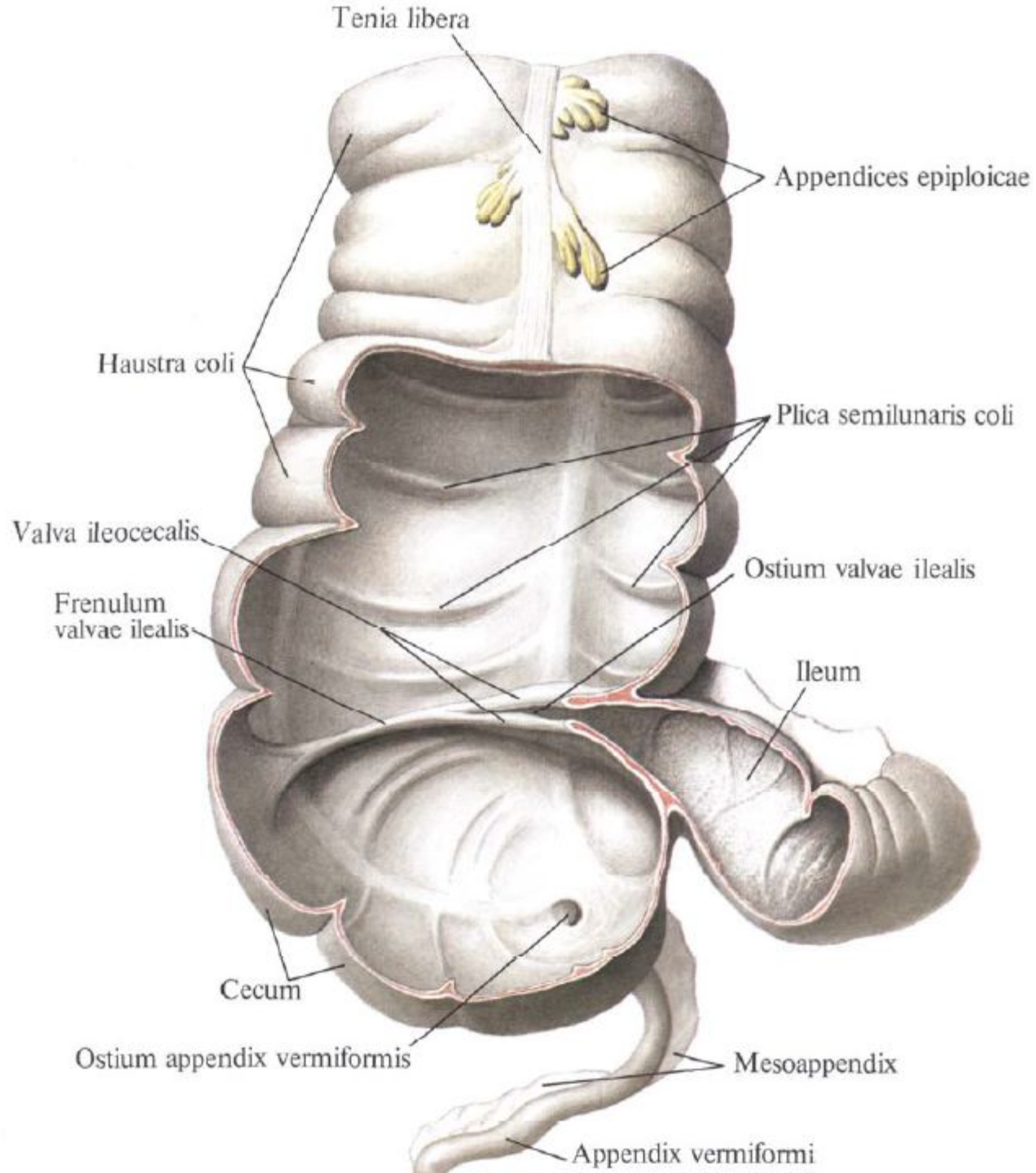
Tela subserosa

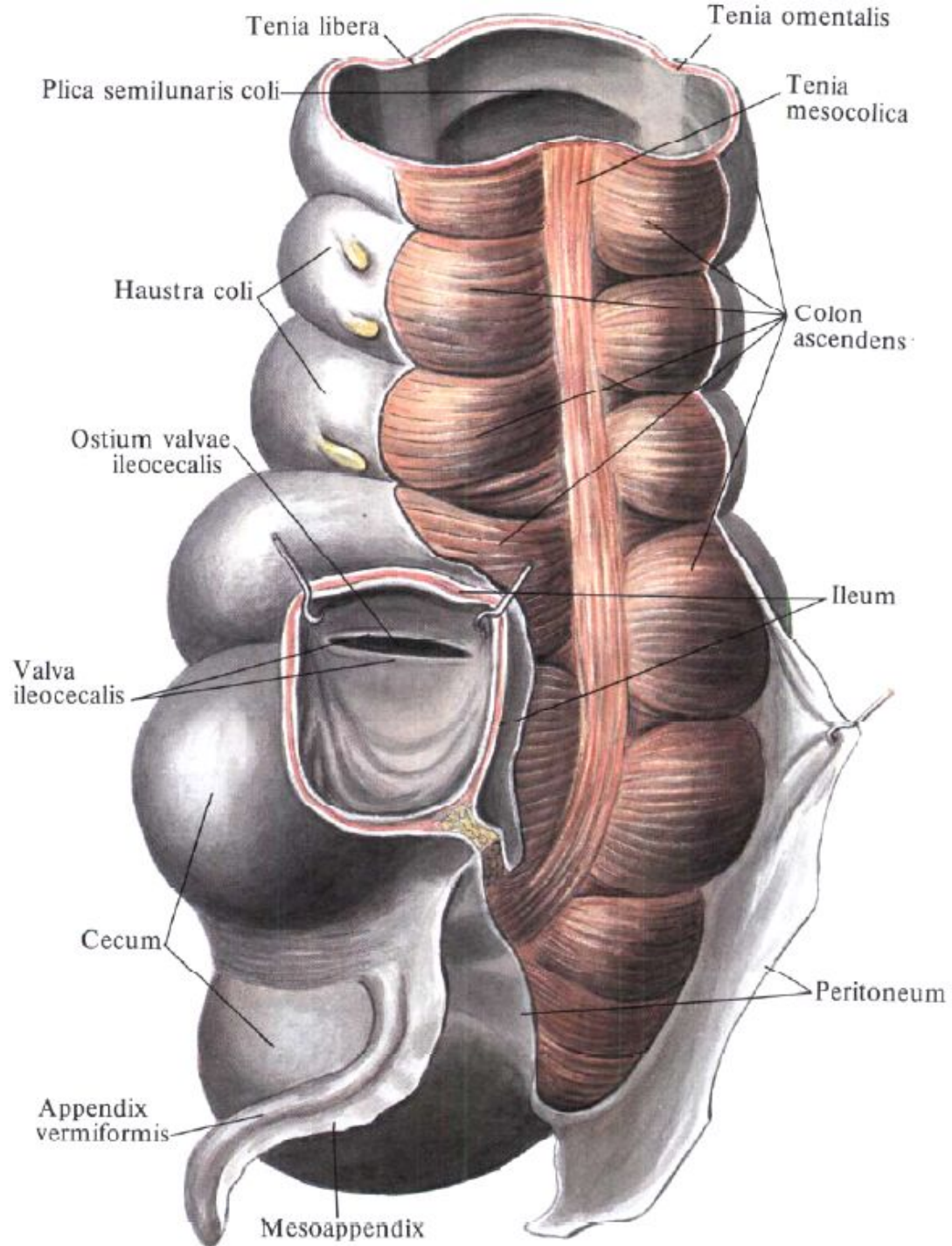
Tunica serosa

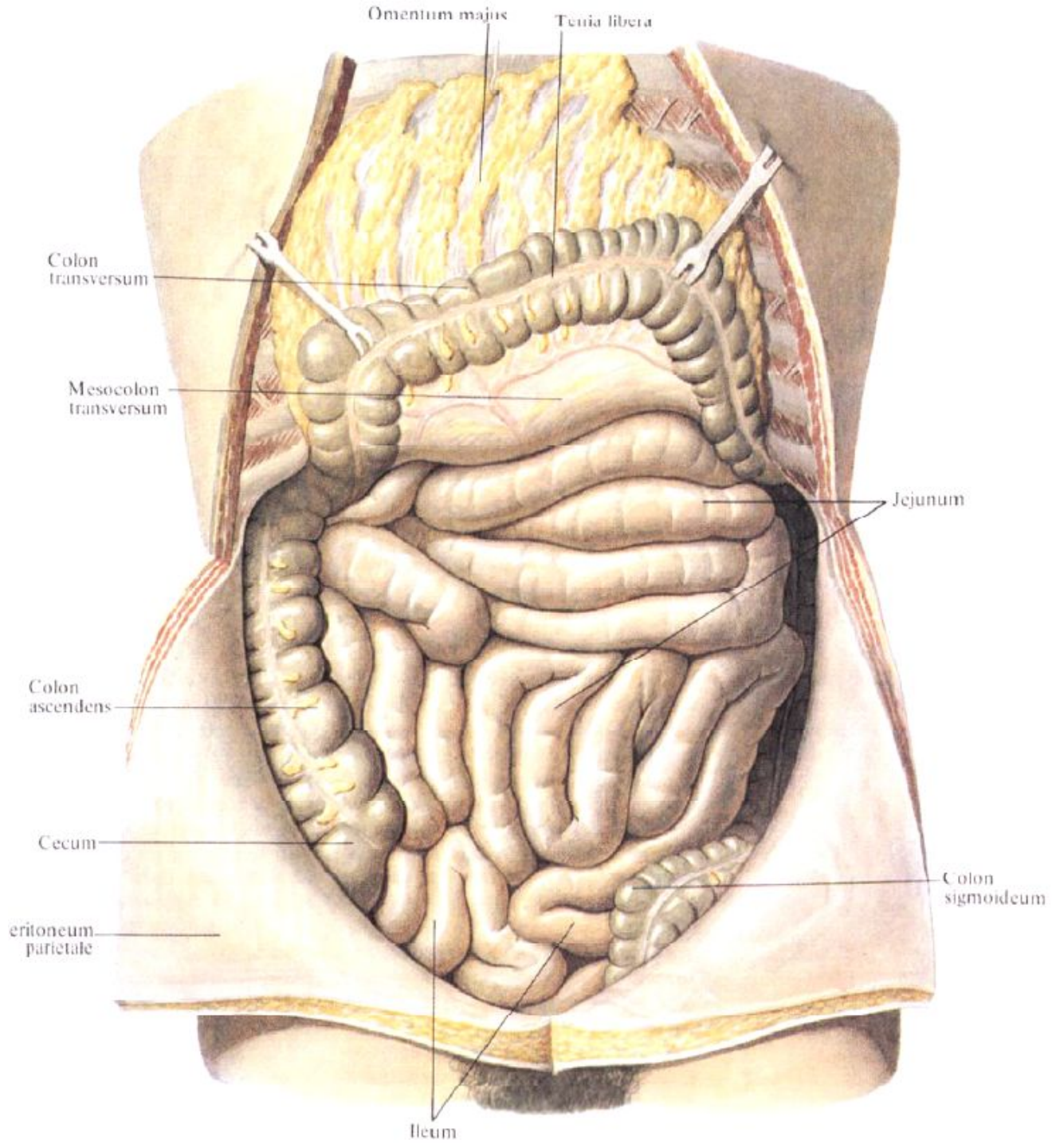




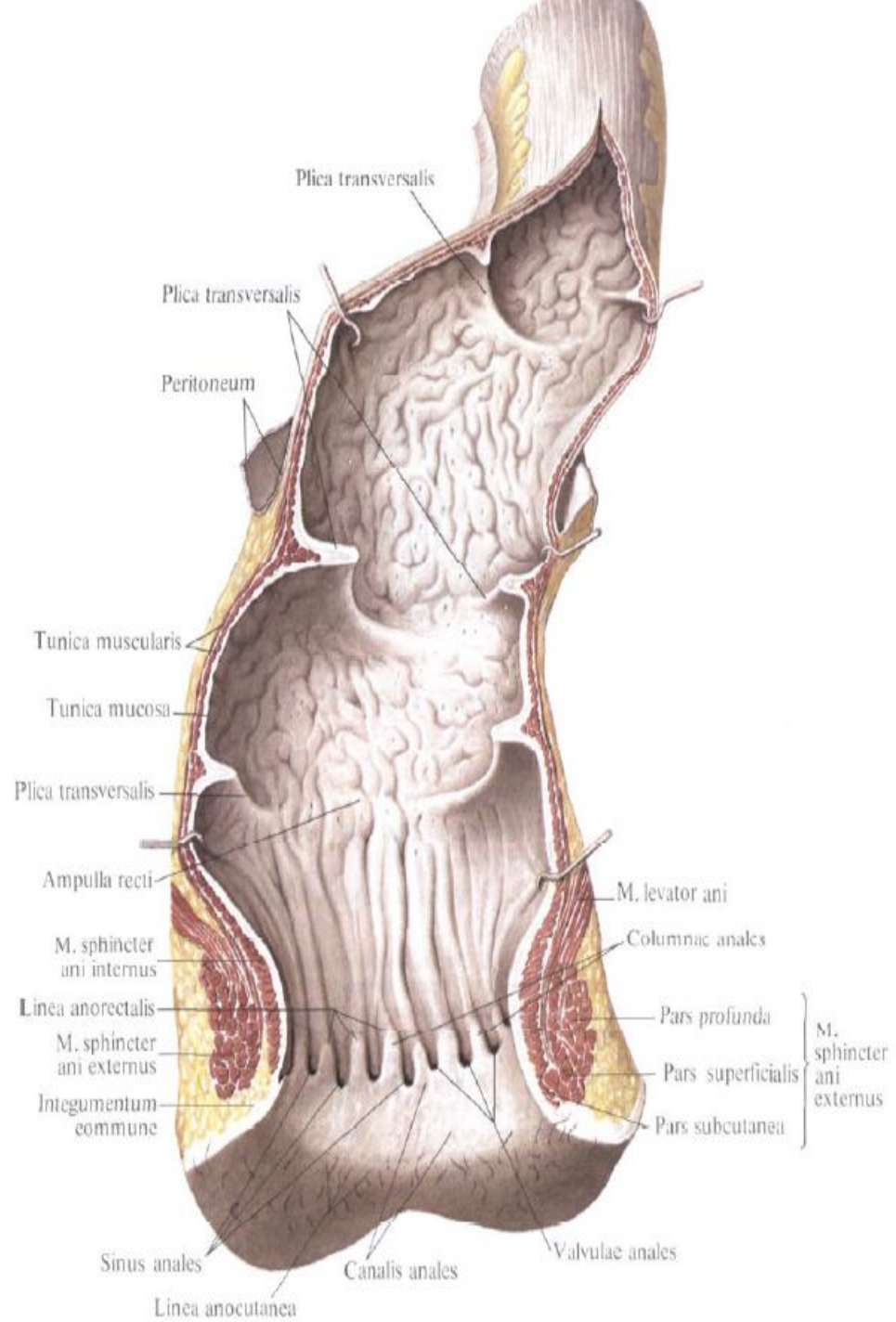
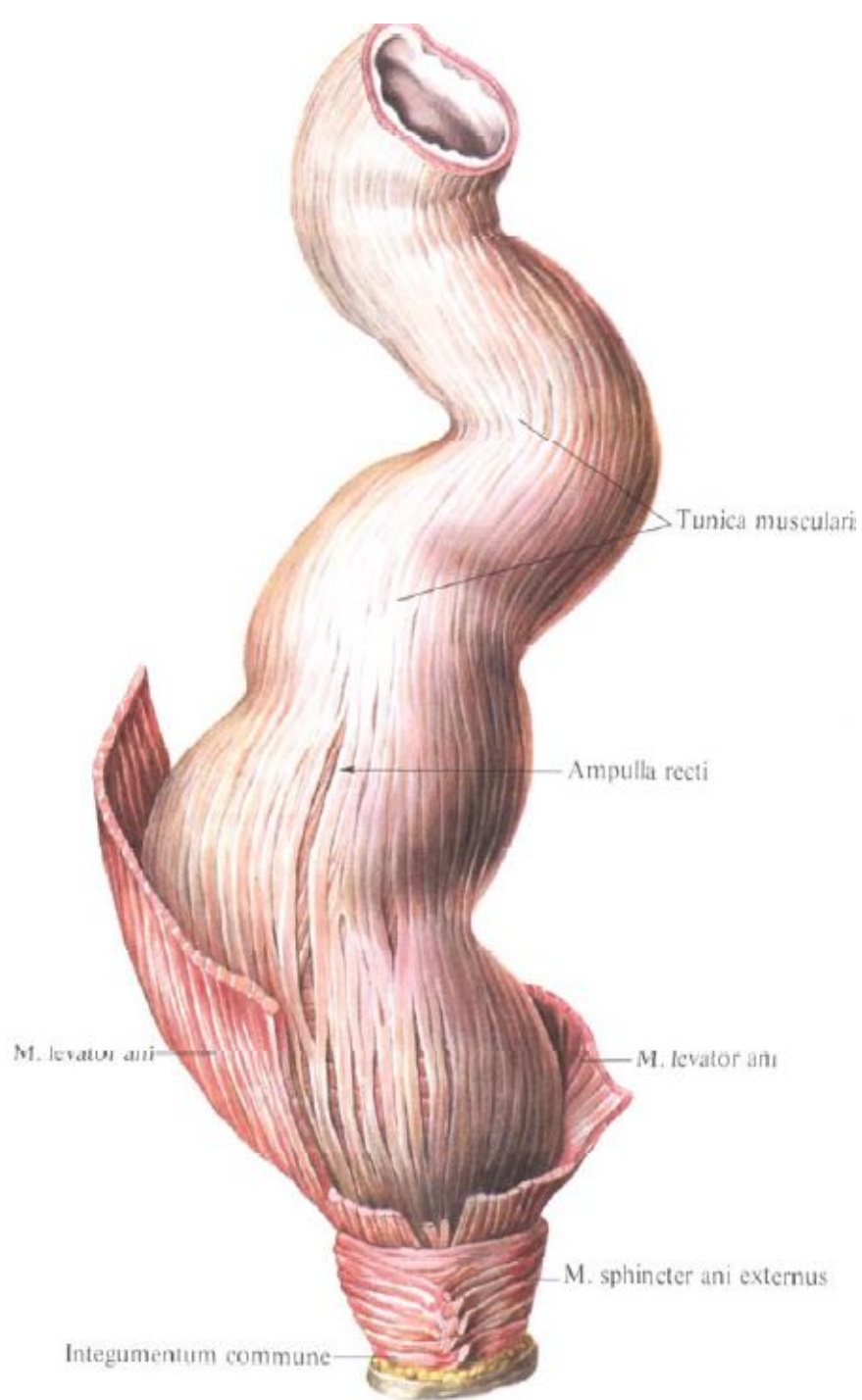








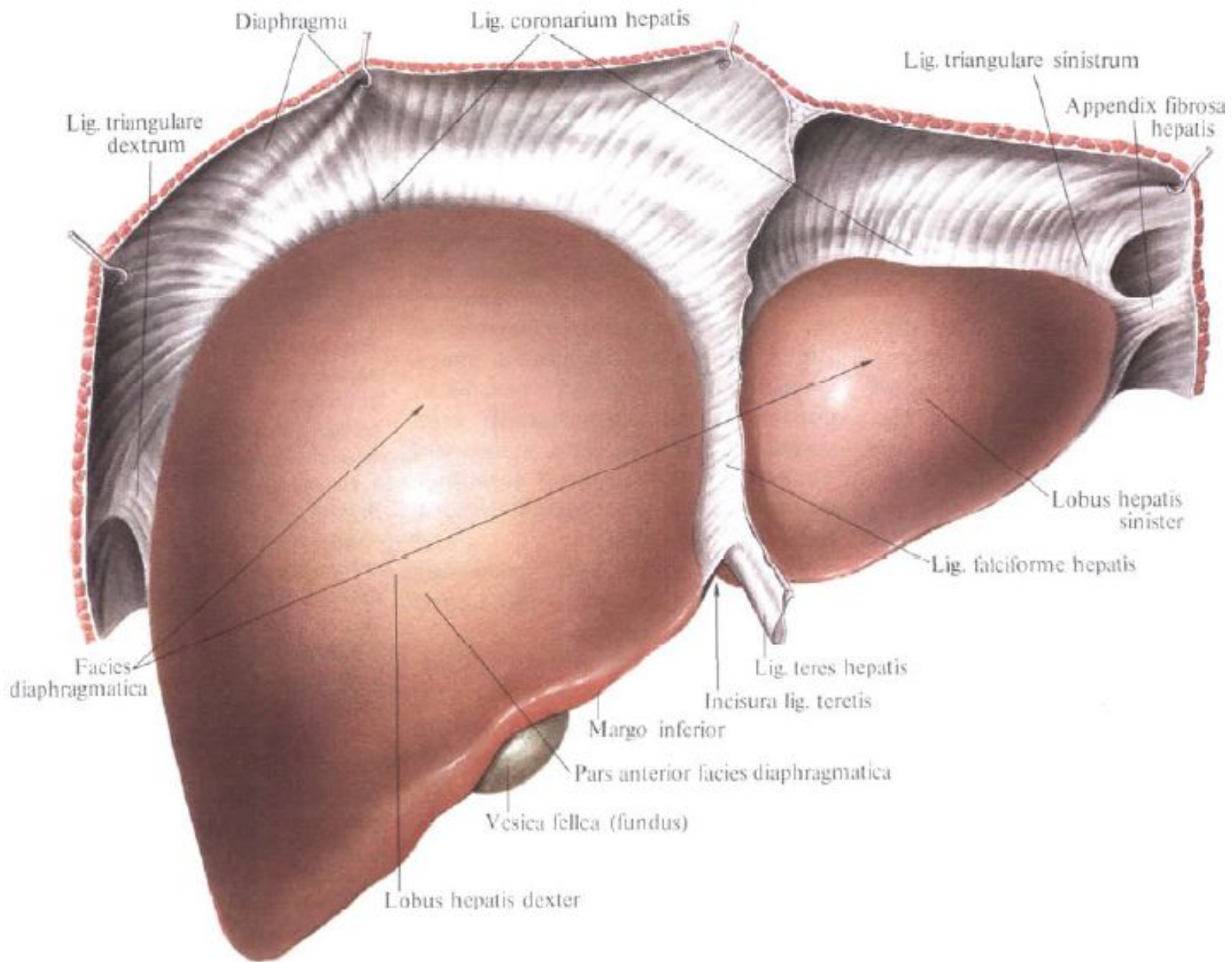


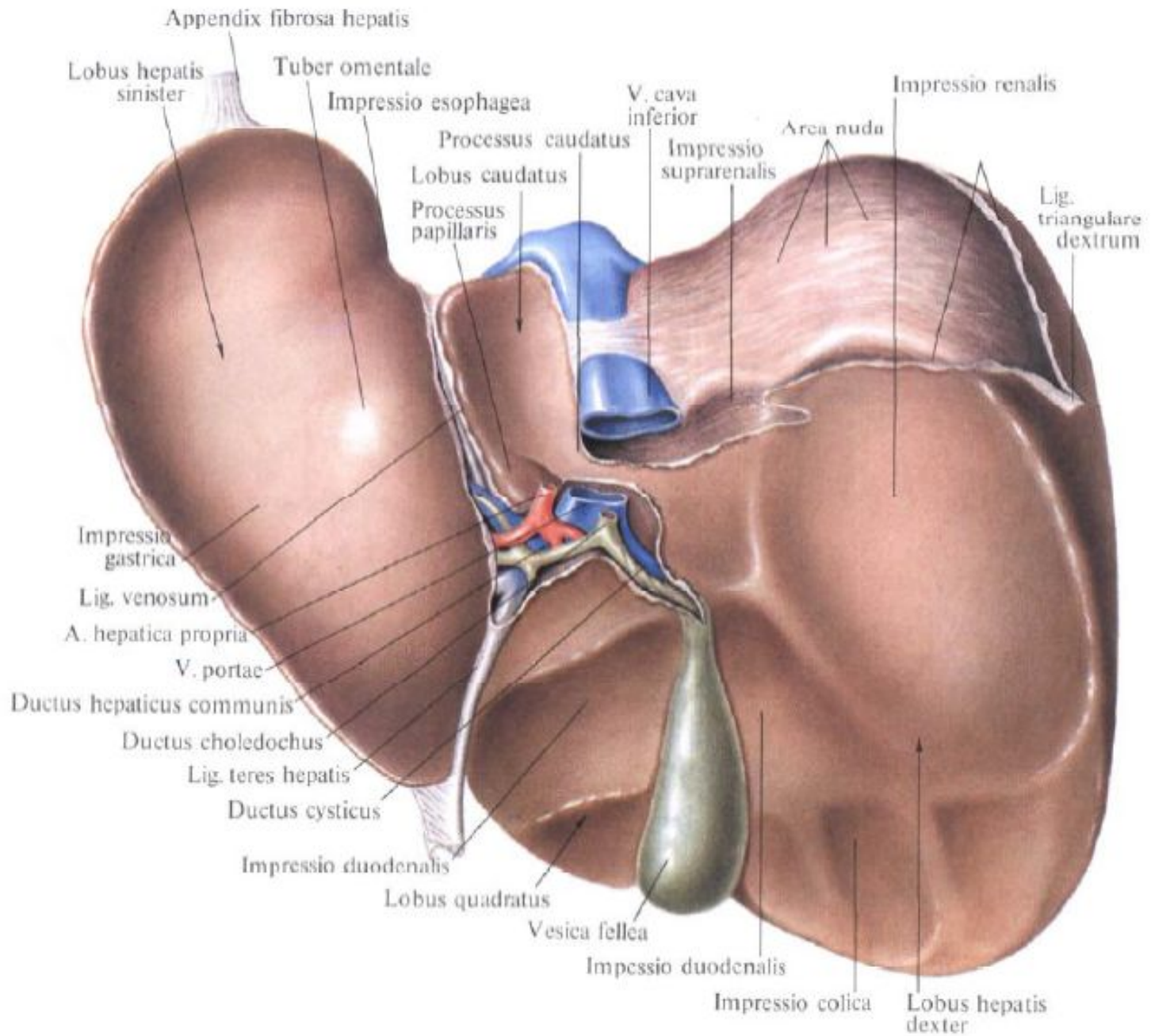




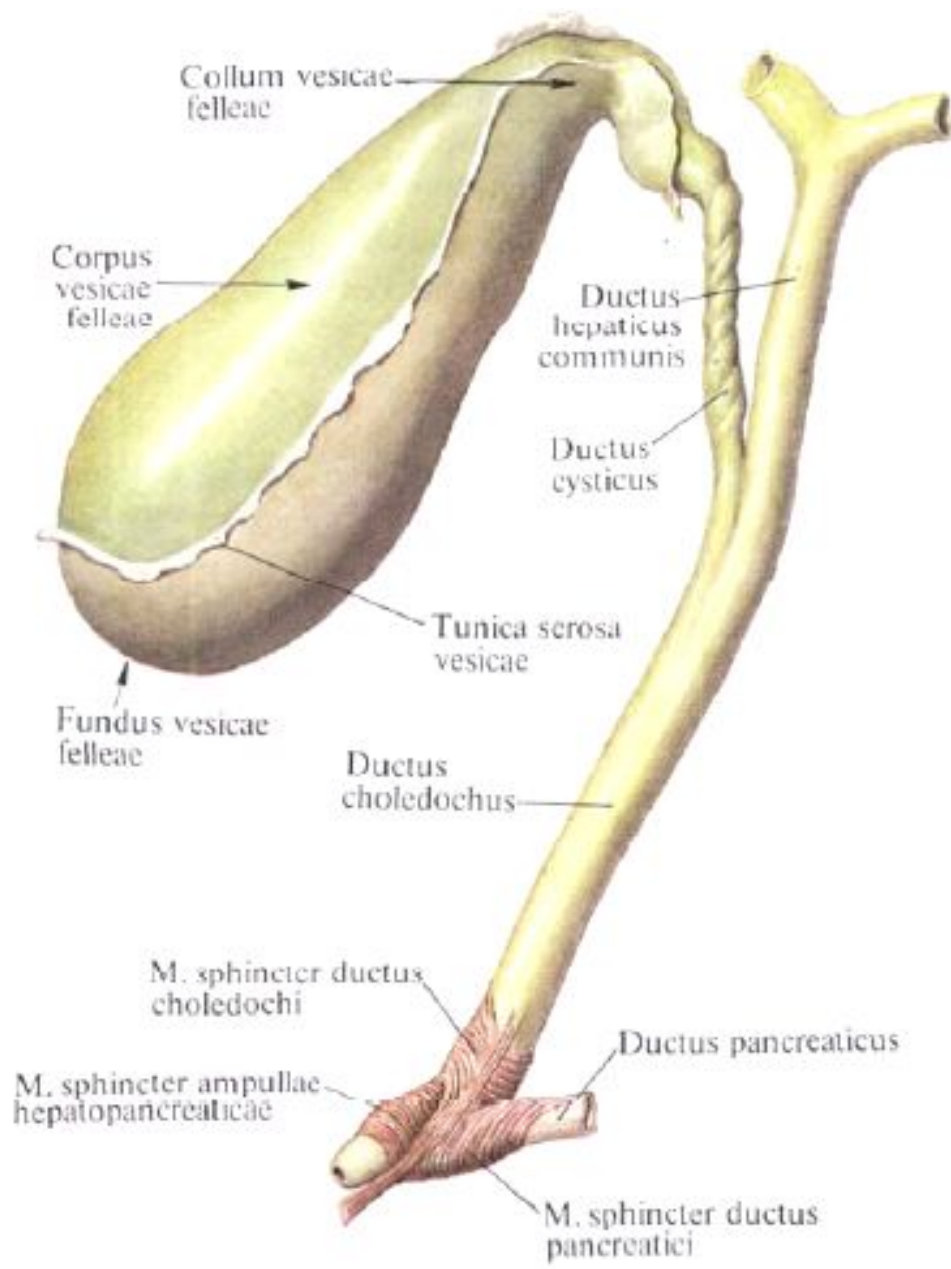
# Занятие №5

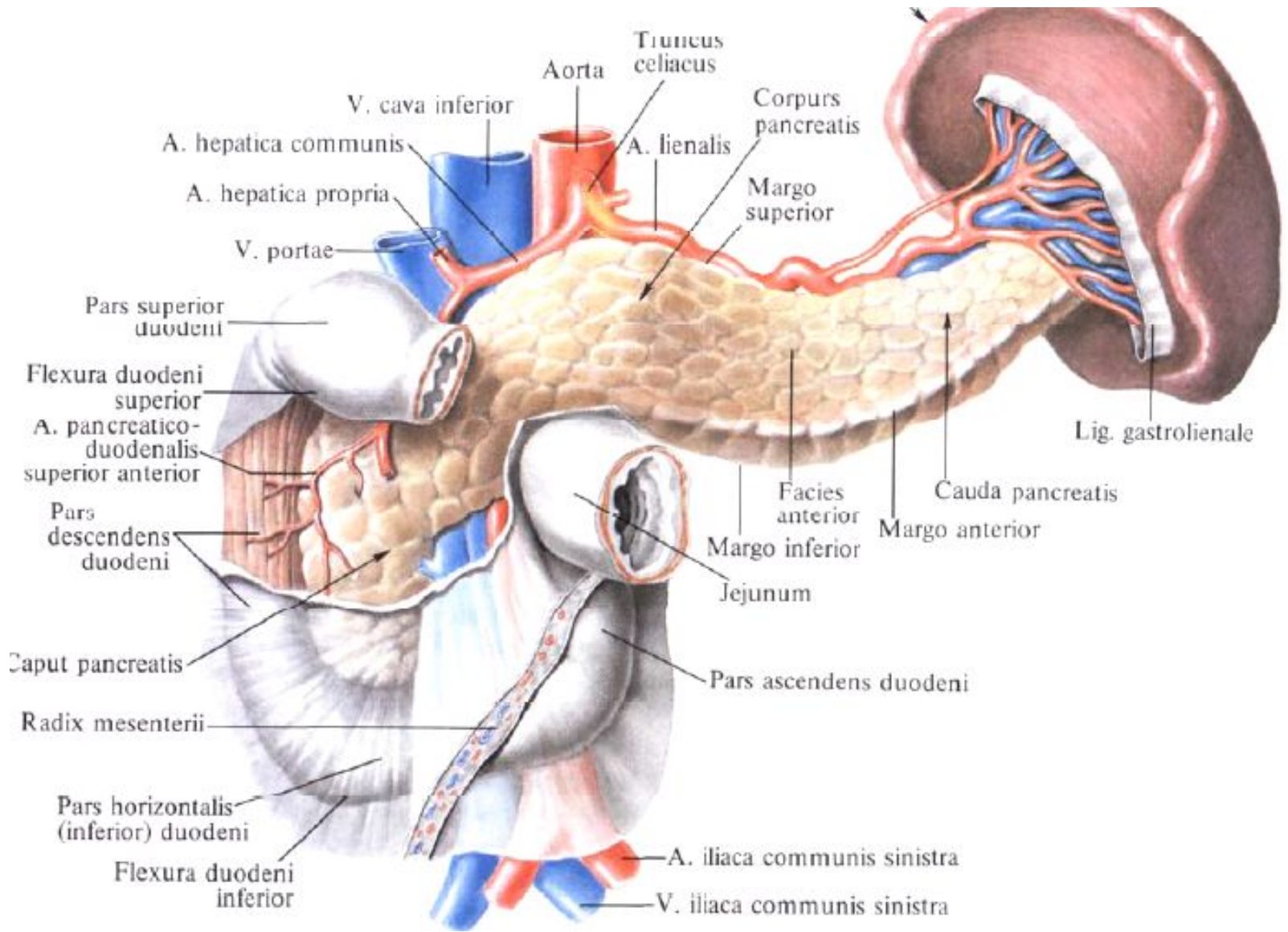
Функциональная анатомия печени и  
поджелудочной железы.

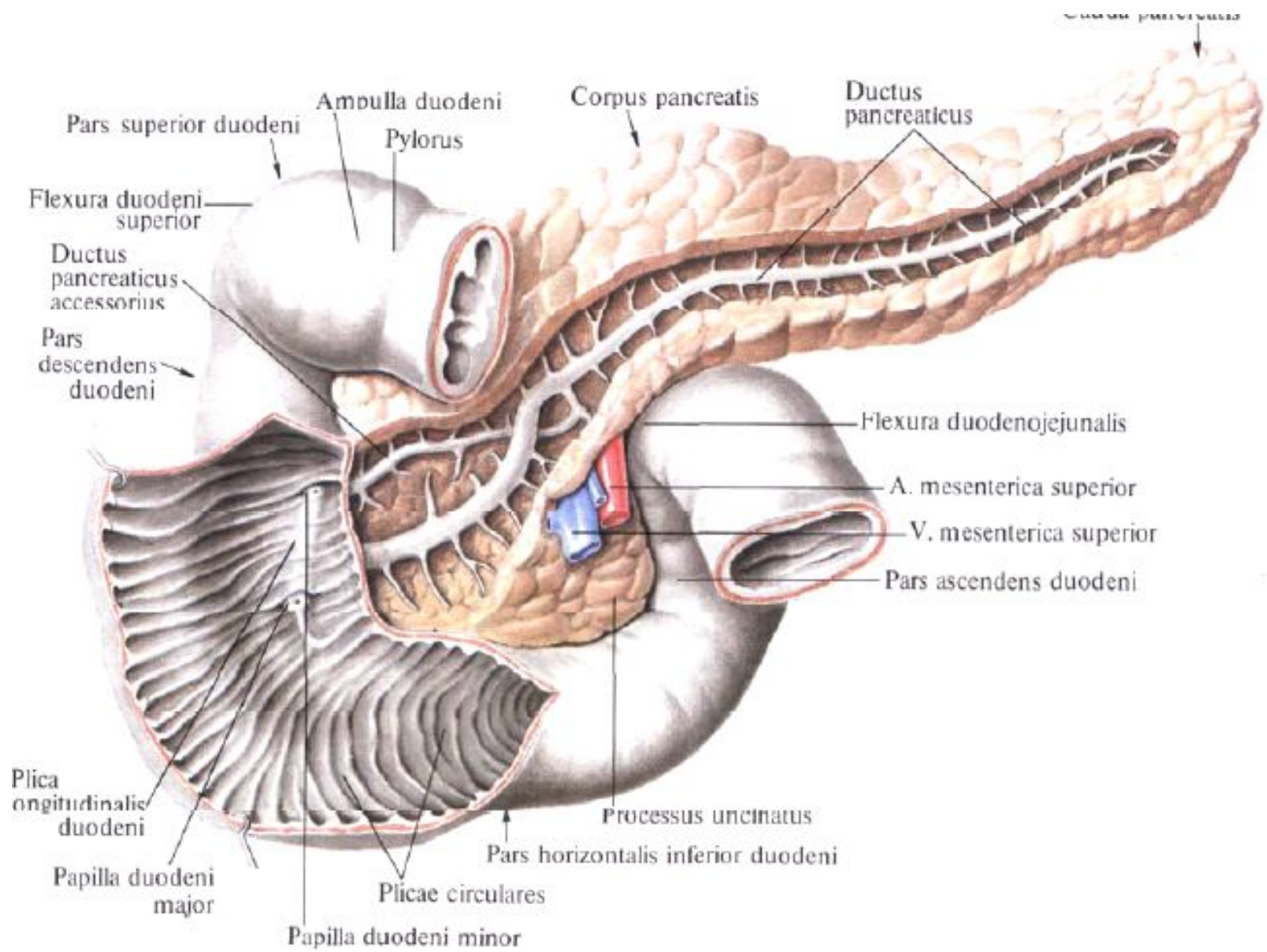




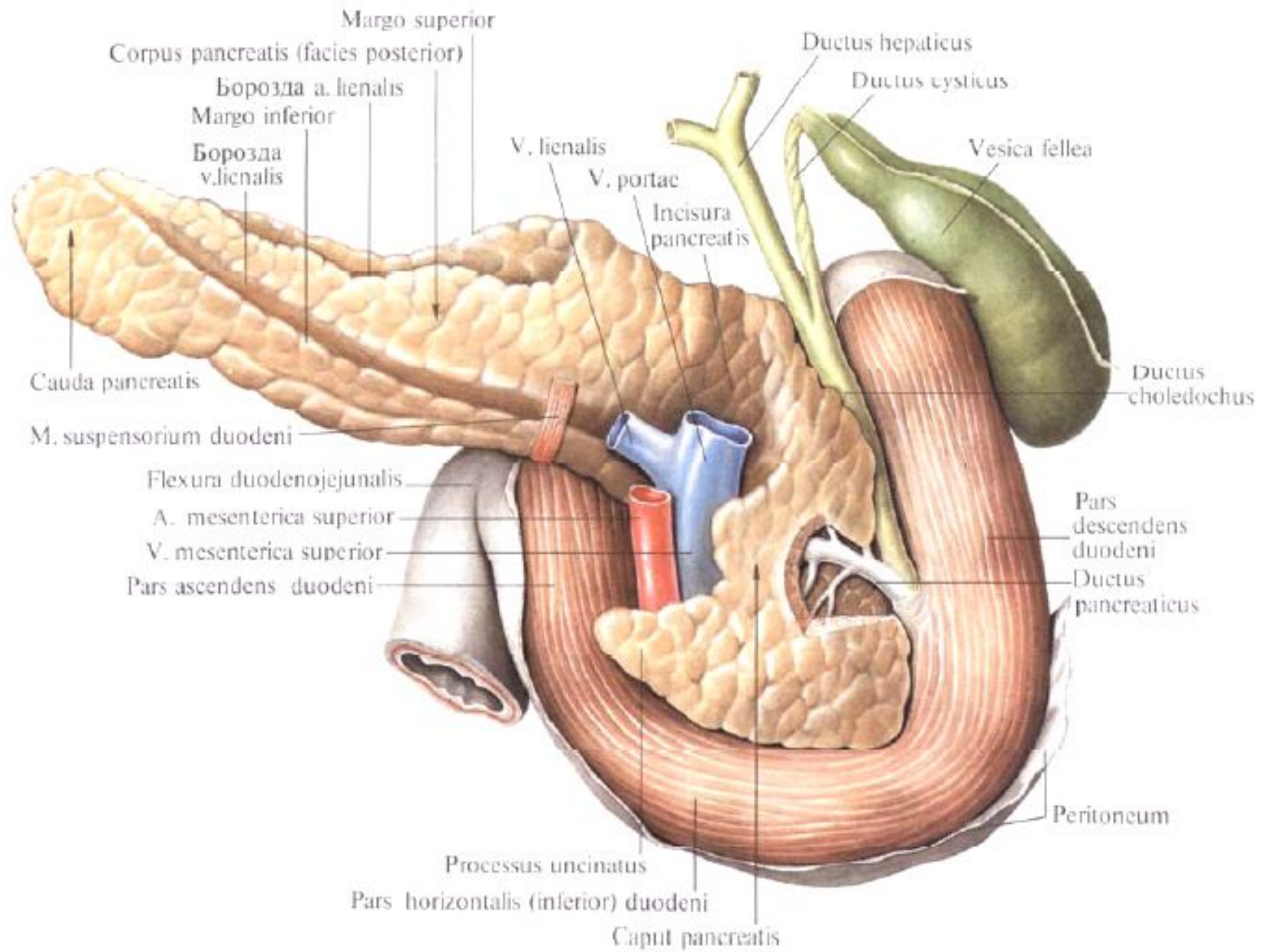






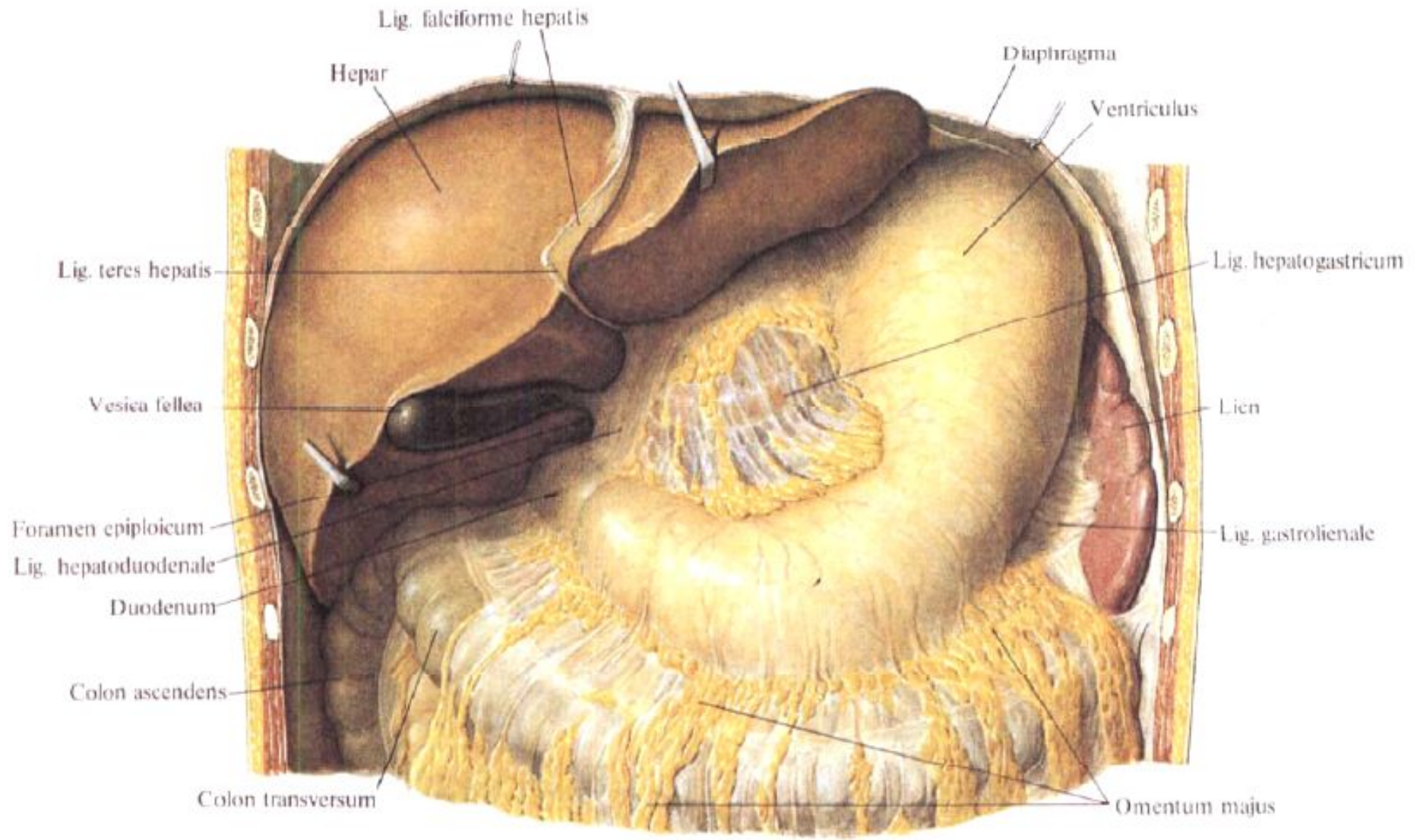




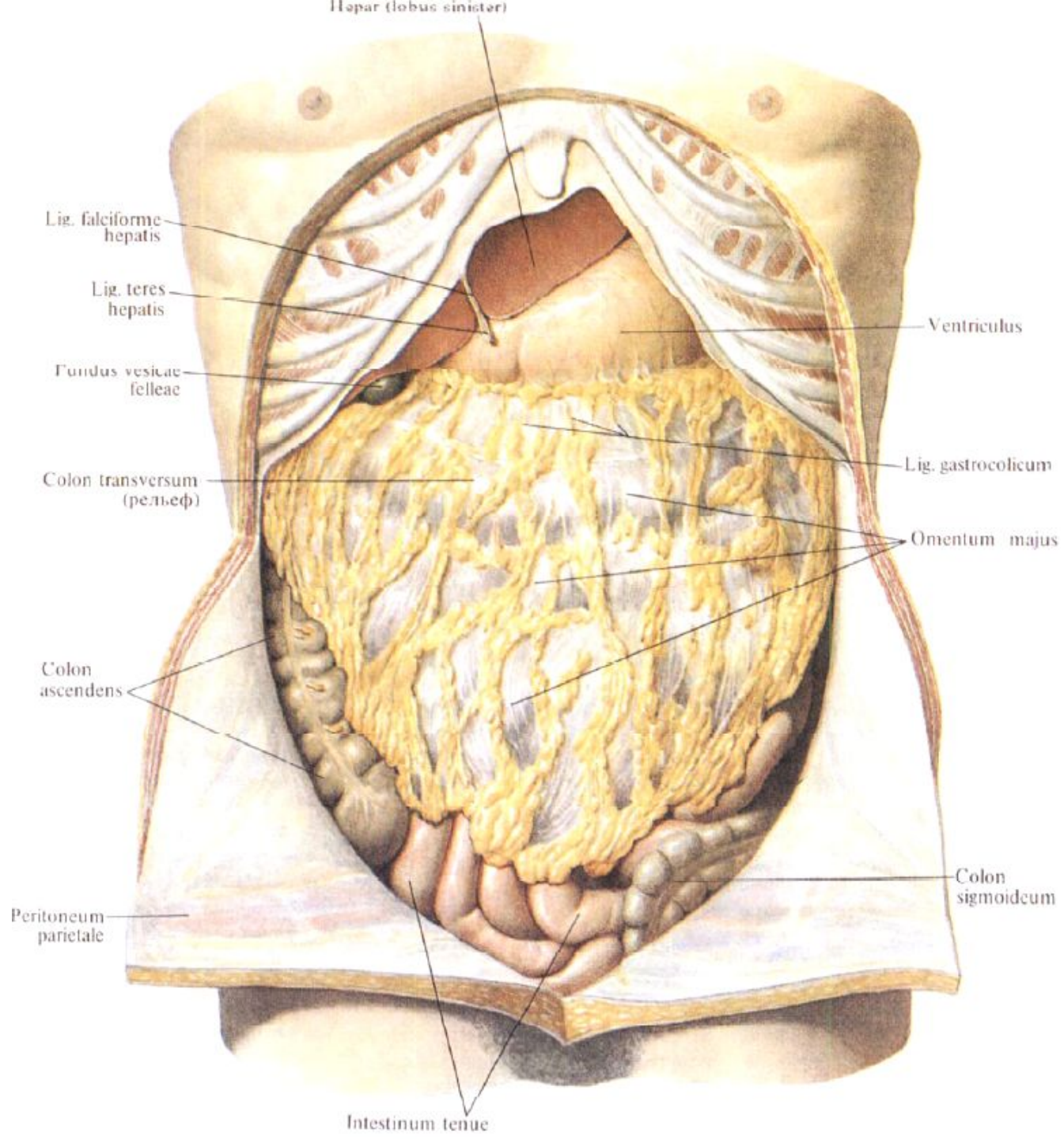


# Занятие №6

Брюшина. Производные брюшины.  
Топография брюшины верхнего этажа  
брюшной полости.

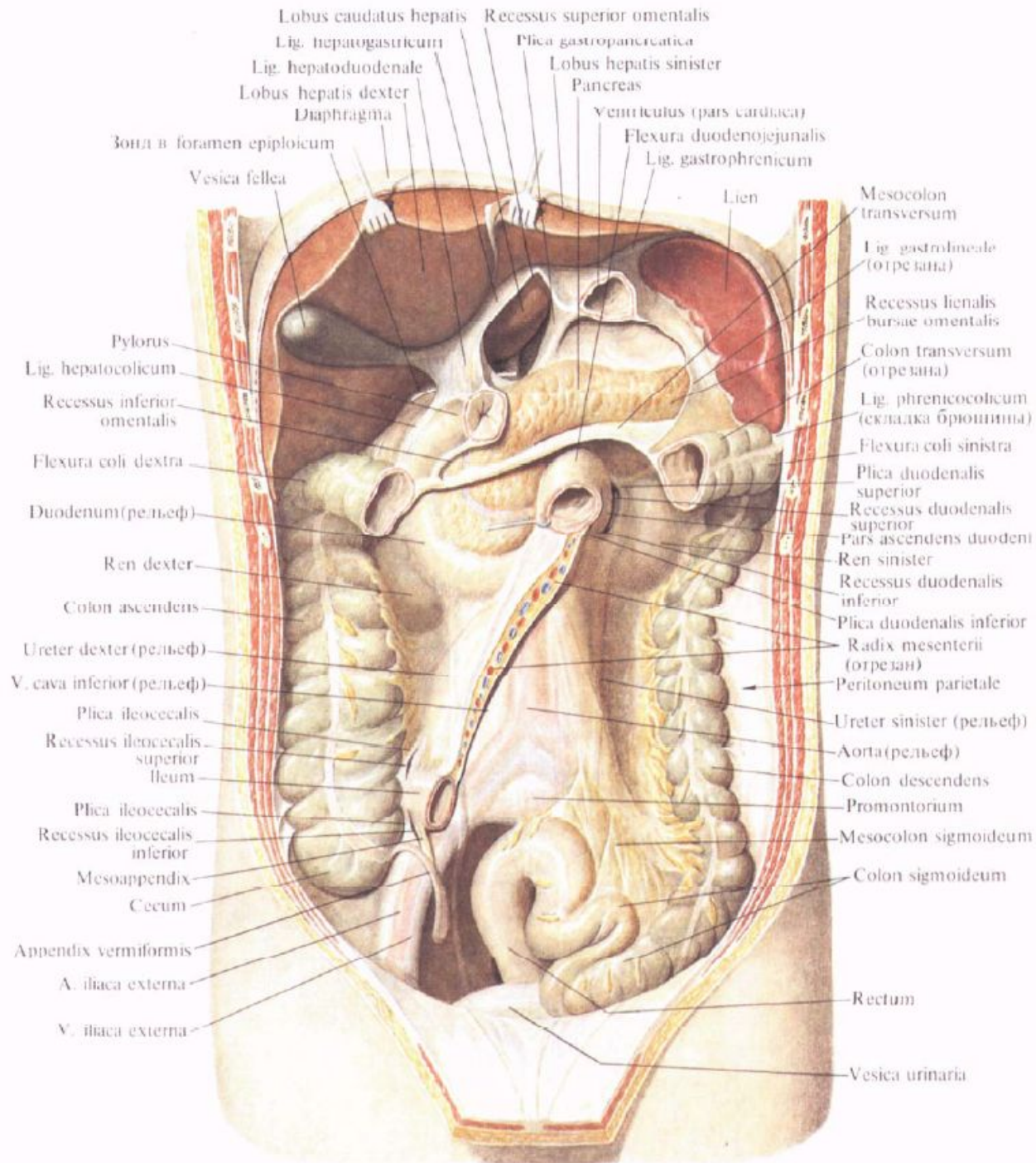




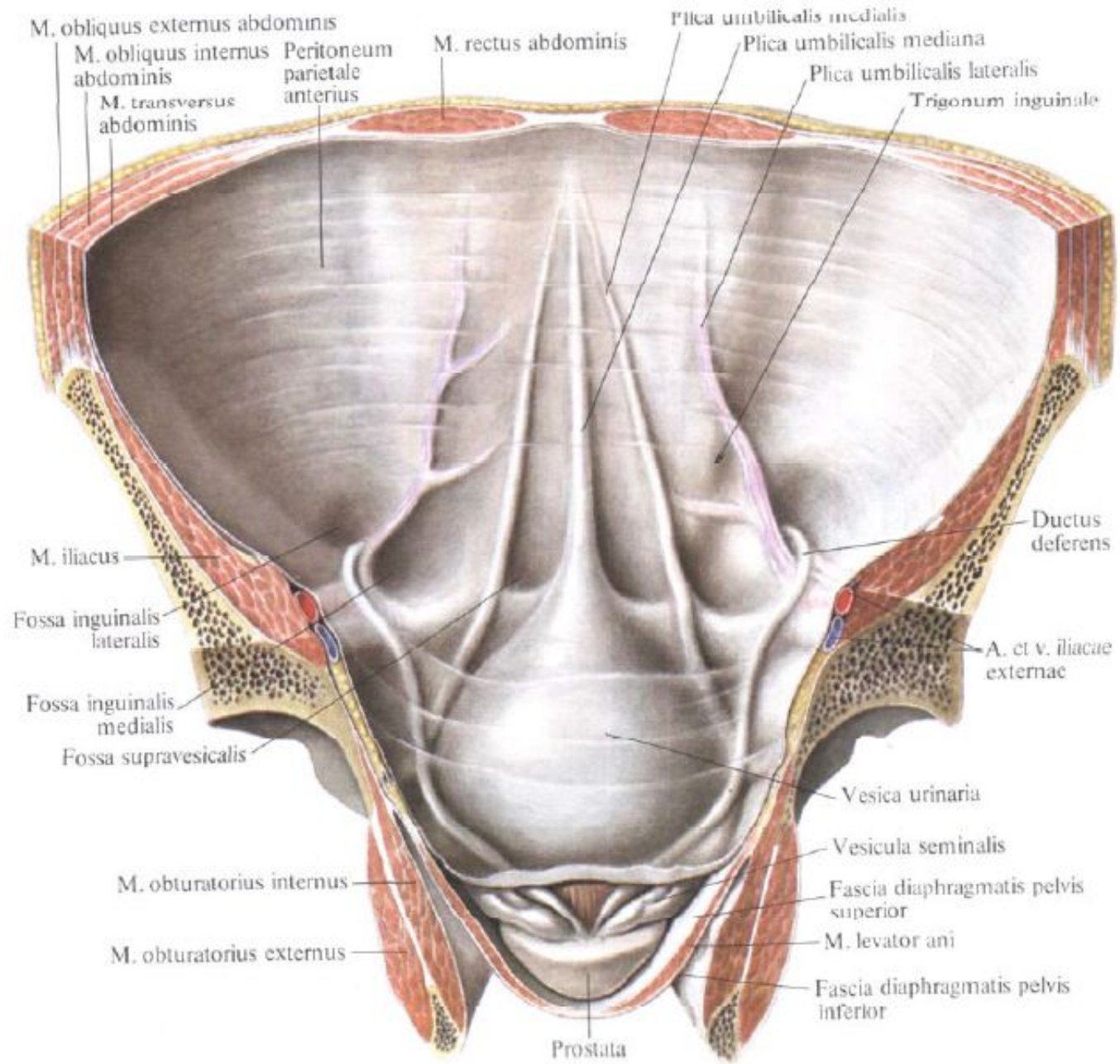


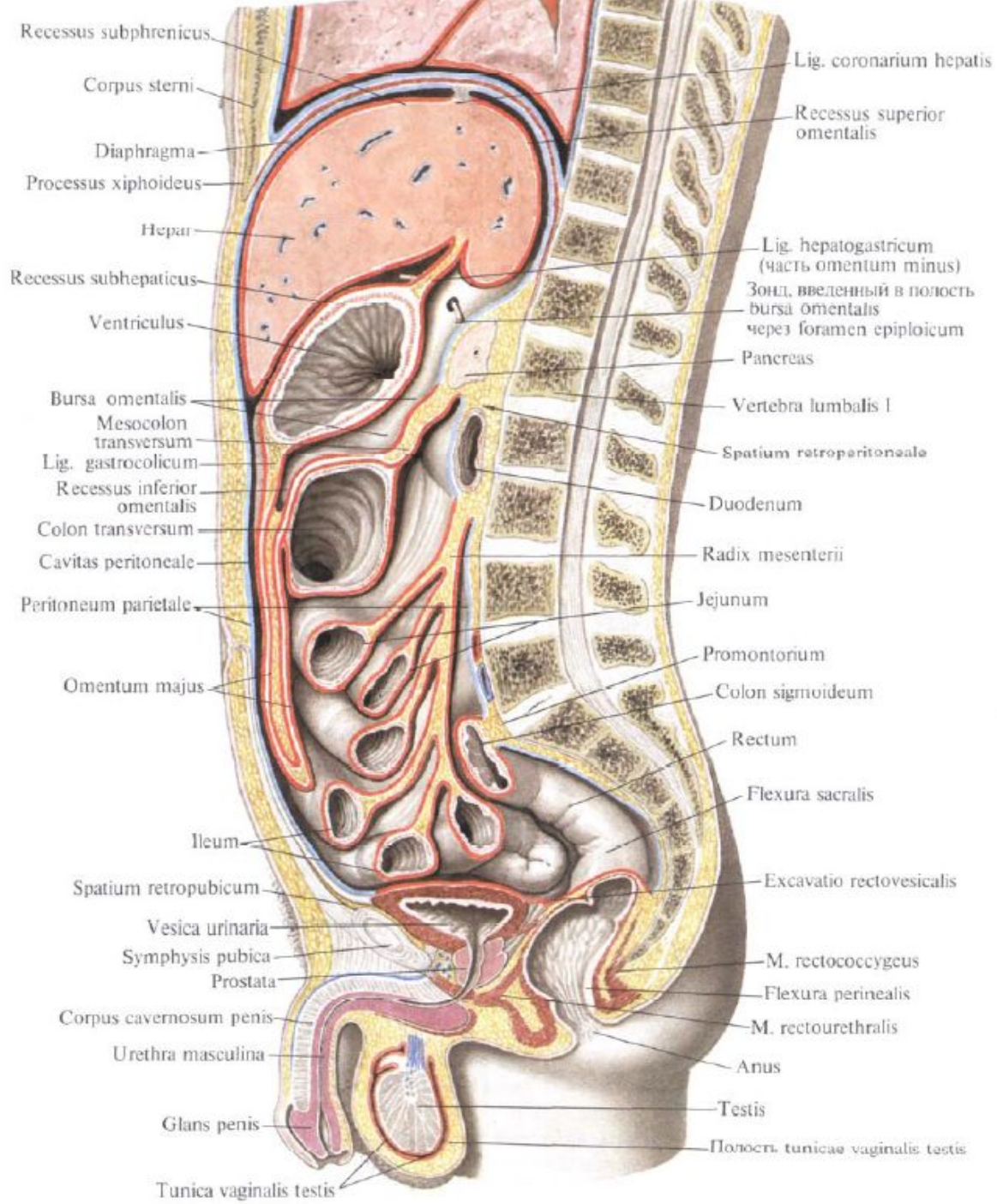
# Занятие №7

Топография брюшины среднего и нижнего этажа брюшной полости.









Recessus subphrenicus  
 Corpus sterni  
 Diaphragma  
 Processus xiphoideus  
 Hepar  
 Recessus subhepaticus  
 Ventriculus  
 Bursa omentalis  
 Mesocolon transversum  
 Lig. gastrocolicum  
 Recessus inferior omentalis  
 Colon transversum  
 Cavitas peritoneale  
 Peritoneum parietale  
 Omentum majus  
 Ileum  
 Spatium retropubicum  
 Vesica urinaria  
 Symphysis pubica  
 Prostata  
 Corpus cavernosum penis  
 Urethra masculina  
 Glans penis  
 Tunica vaginalis testis

Lig. coronarium hepatis  
 Recessus superior omentalis  
 Lig. hepatogastricum (часть omentum minus)  
 Зонд, введенный в полость bursa omentalis через foramen epiploicum  
 Pancreas  
 Vertebra lumbalis I  
 Spatium retroperitoneale  
 Duodenum  
 Radix mesenterii  
 Jejunum  
 Promontorium  
 Colon sigmoideum  
 Rectum  
 Flexura sacralis  
 Excavatio rectovesicalis  
 M. rectococcygeus  
 Flexura perinealis  
 M. rectourethralis  
 Anus  
 Testis  
 Поночн. tunicae vaginalis testis



