

МДК 02.02 Организация администрирования
компьютерных сетей

Планирование и развертывание серверов с использованием диспетчера виртуальных машин (VMM)

Для групп специальности СПО 09.02.02
Компьютерные сети

МДК 02.02 Организация администрирования
компьютерных сетей

Virtual Machine Manager (SCVMM)

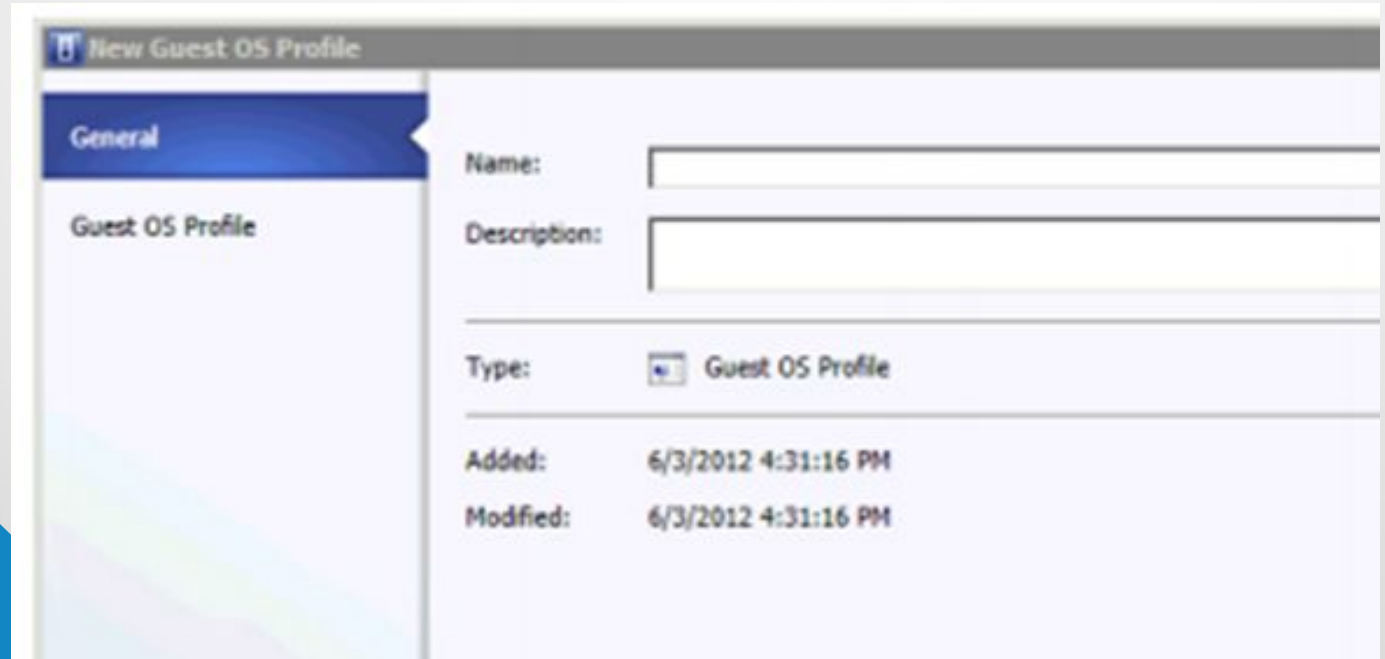
Design Template Designer

Create New Guest OS Profile
New Template Wizard

Для групп специальности СПО 09.02.02
Компьютерные сети

МДК 02.02 Организация администрирования
компьютерных сетей

Guest OS Profile



The screenshot displays the 'New Guest OS Profile' configuration window. The window title is 'New Guest OS Profile'. On the left, there is a sidebar with a 'General' tab selected. Below the tab, the text 'Guest OS Profile' is visible. The main configuration area contains the following fields:

- Name:** An empty text input field.
- Description:** An empty text input field.
- Type:** A dropdown menu with 'Guest OS Profile' selected.
- Added:** 6/3/2012 4:31:16 PM
- Modified:** 6/3/2012 4:31:16 PM

Для групп специальности СПО 09.02.02
Компьютерные сети

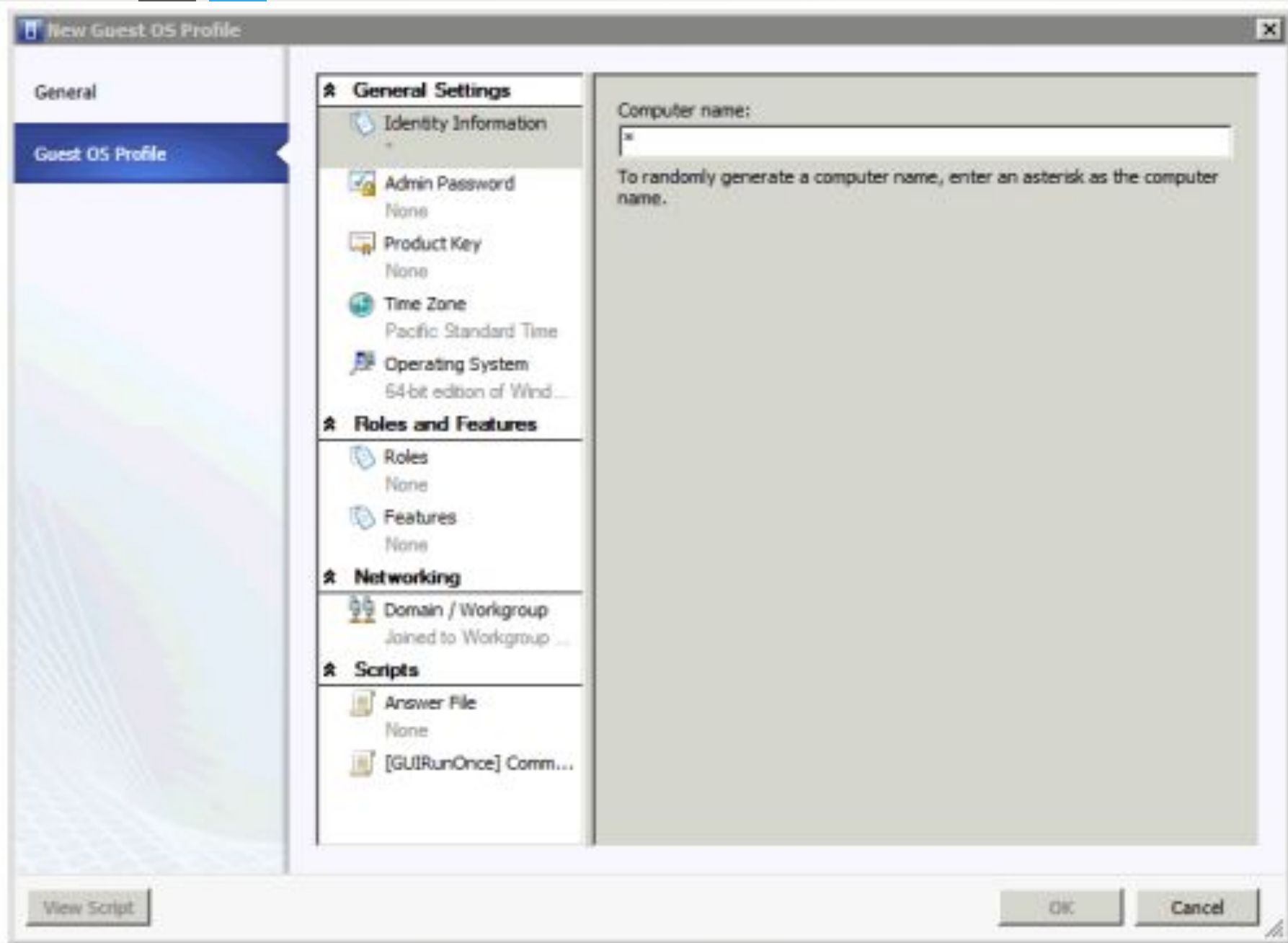


FIGURE 1-20 The Guest OS Profile pane enables the configuration of a guest operating system profile.

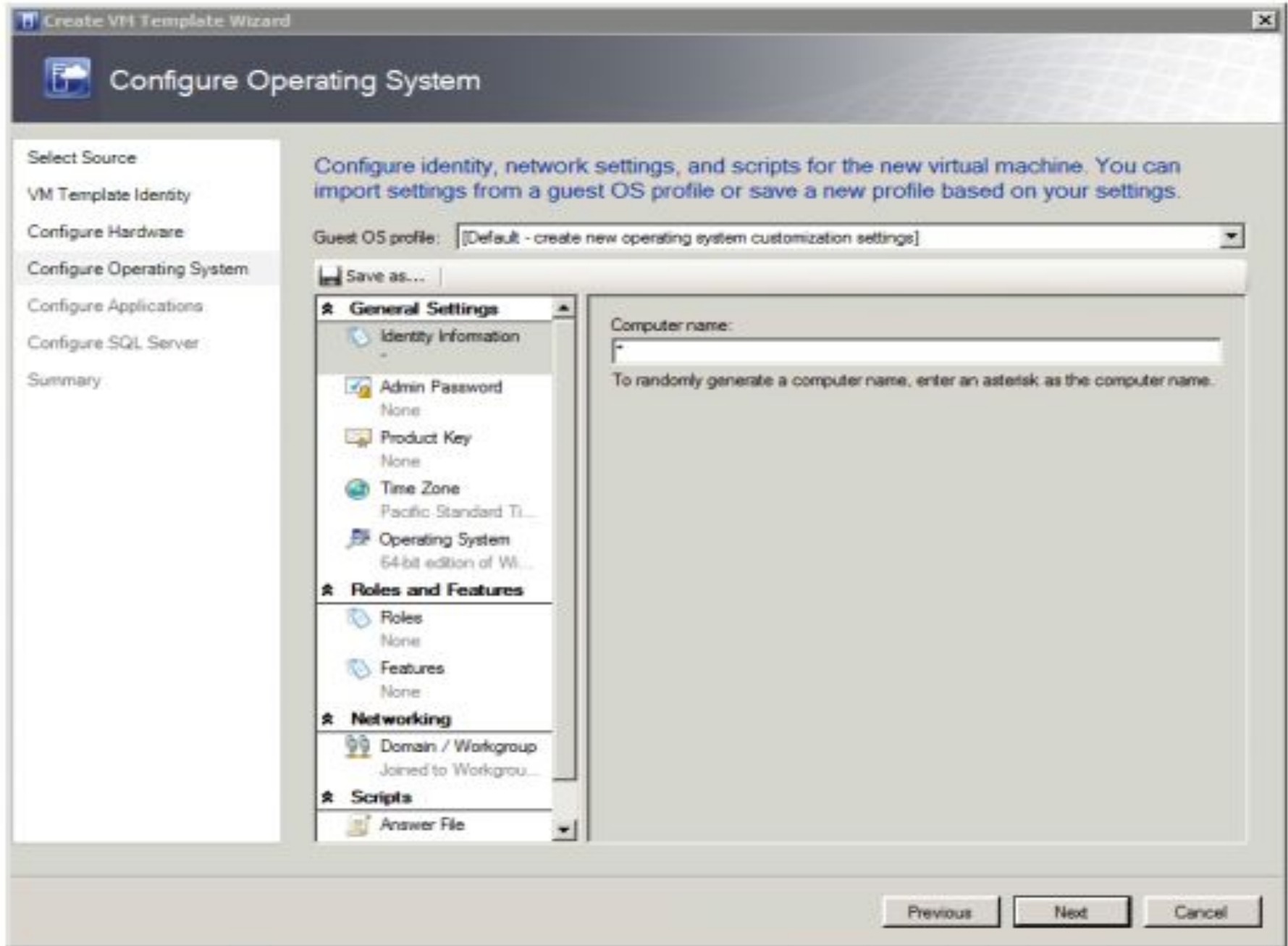


FIGURE 1-21 Creating a guest operating system profile as part of the Create New VM Template Wizard.

General

Hardware Profile

New: SCSI Adapter DVD Network Adapter Remove

- No Media Captured
- COM 1
None
- COM 2
None
- Video Adapter
Default video ada...
- ★ Bus Configuration**
- IDE Devices
1 Device attached.
 Virtual DVD dr...
No Media Ca...
- SCSI Adapter 0
0 Devices attached
- ★ Network Adapters**
- Legacy Network ...
Not connected
- ★ Advanced**
- Availability
Normal
- BIOS
CD
- CPU Priority
Normal

SCSI Adapter 0

SCSI adapter type:

View Script

OK

Cancel

Встроенных профиля:

- ✓ Hyper-V
- ✓ XenServer
- ✓ ESX Server

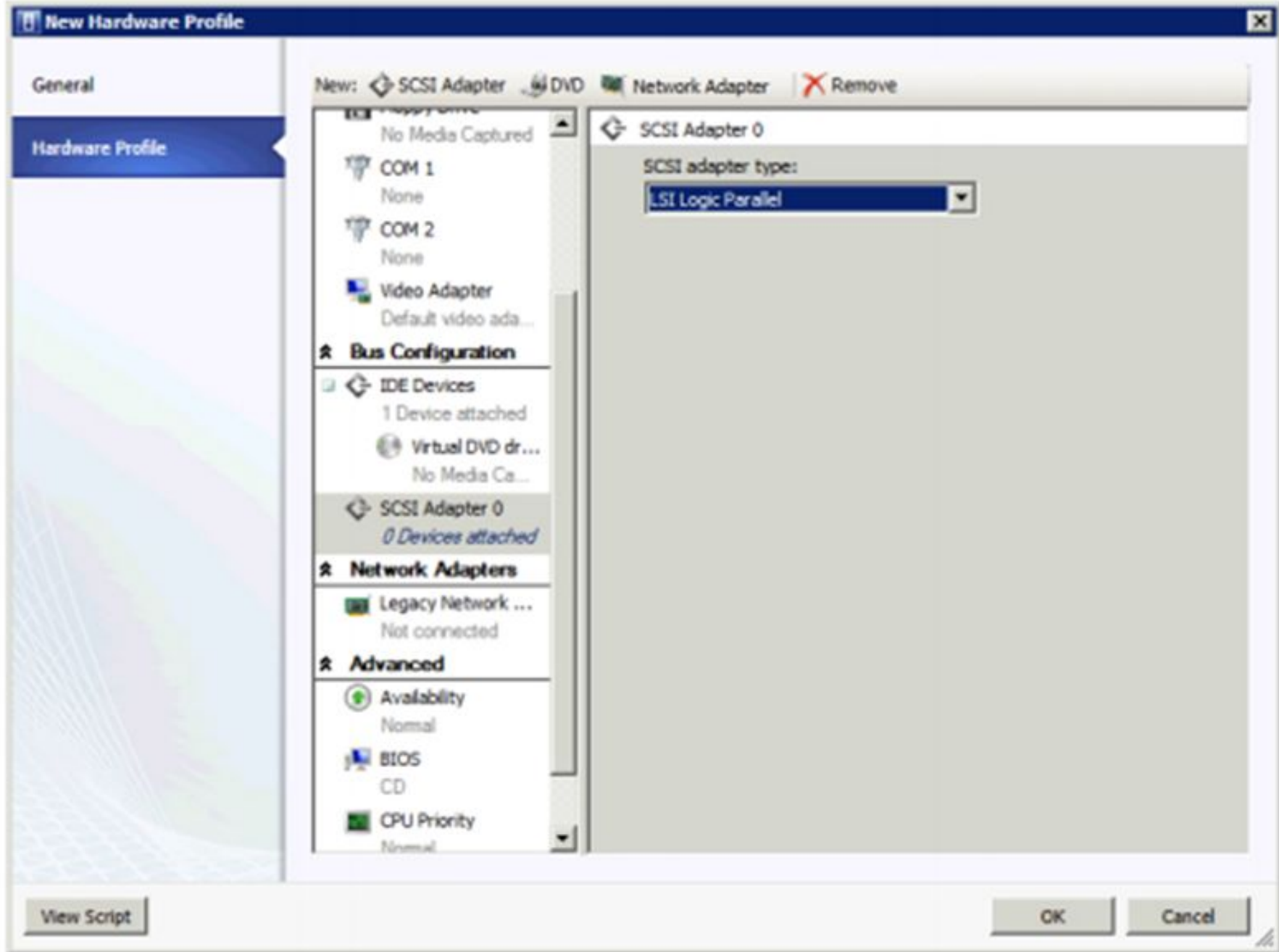


FIGURE 1-23 Creating a hardware profile in VMM.

OS Image

Profile Description

OS Image

Hardware Configuration

OS Configuration

Host settings

Summary

Select a VHD-based OS image for the target Hyper-V host

Virtual Machine Manager (VMM) only supports deploying versions of Windows Server that boot from a virtual hard disk (VHD), such as Windows Server 2008 R2. For more information about operating systems for which VMM supports deployment, see the Deployment Guide. The Hyper-V role in this operating system will be installed by default.

VHD file: \\WINVMM1.adventure-works.com\MSSCVHMLibrary\VHDs\Blank Disk - Small.vhd

Browse...


Virtual hard disk type: Dynamic

Expanded size: 16.00 GB

Current size: 35 KB

Minimum partition size needed: 16.00 GB

 Do not convert the VHD to fixed type during deployment

 When doing a deployment, VMM advises that you have enough free space on the partition to contain the recommended page file size, which is determined by the host's system memory amount.

Previous

Next

Cancel

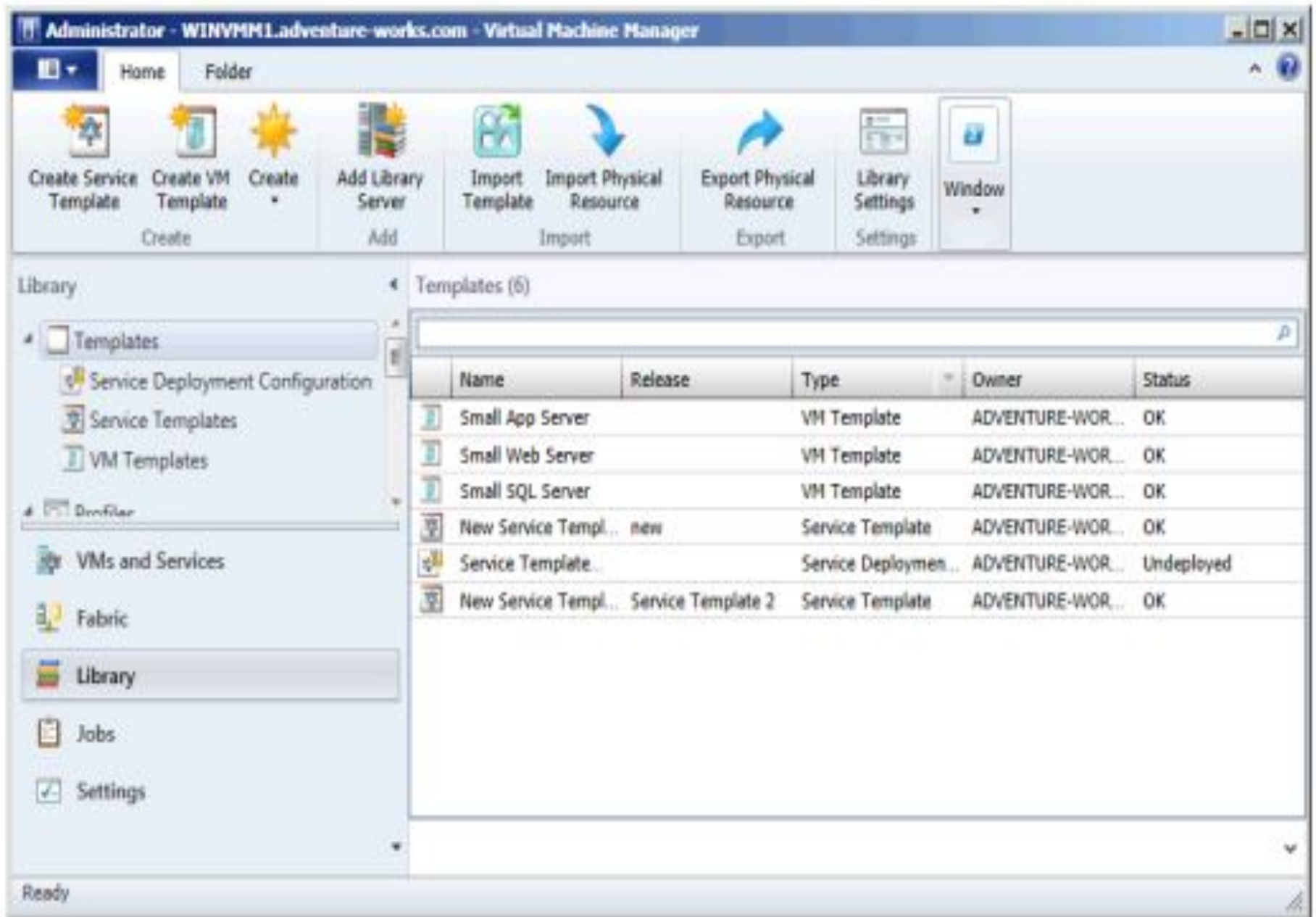


FIGURE 1-25 The Template Library in VMM is the starting point for configuration of templates.

МДК 02.02 Организация администрирования компьютерных сетей

Fabric в VMM

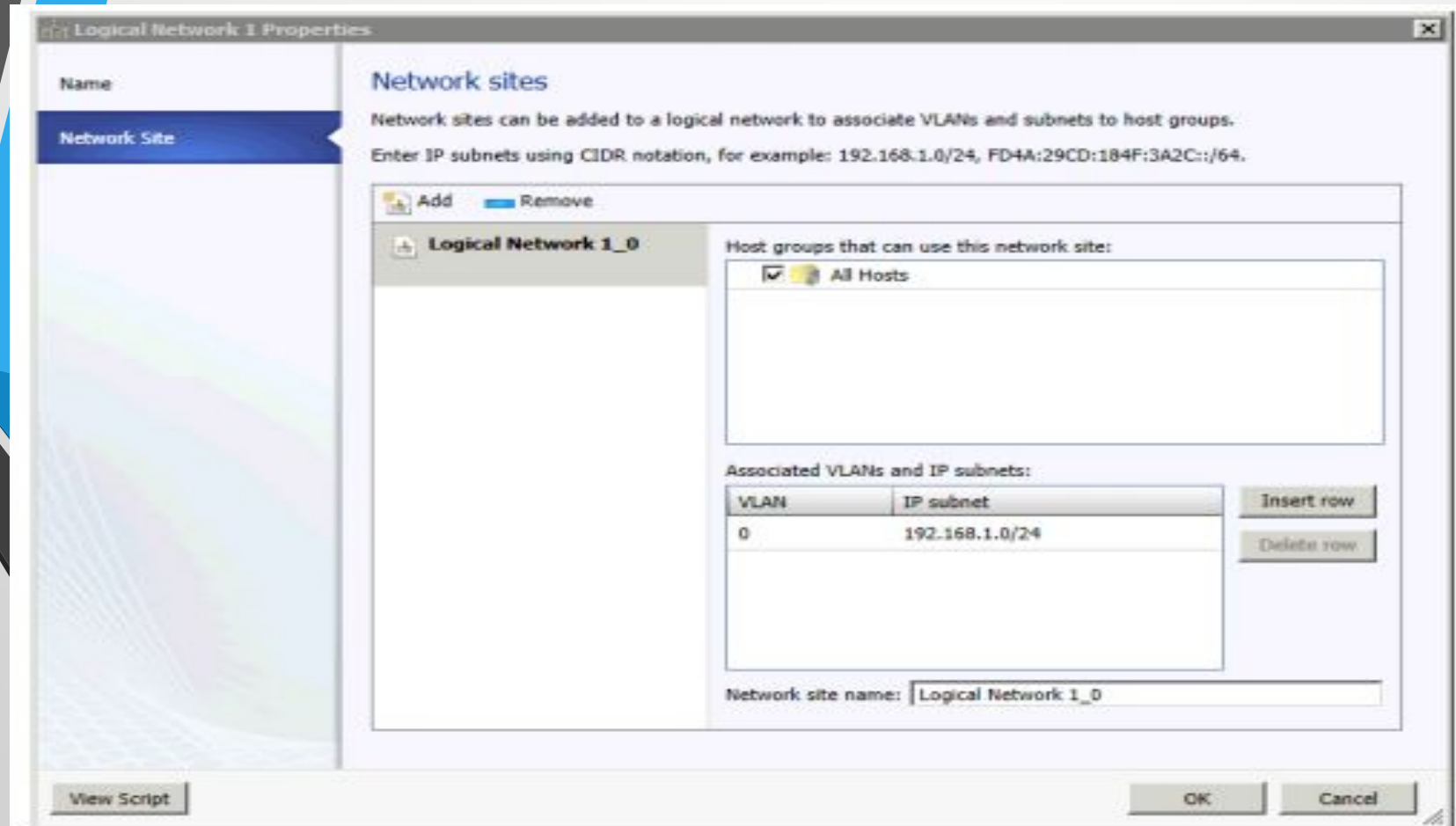
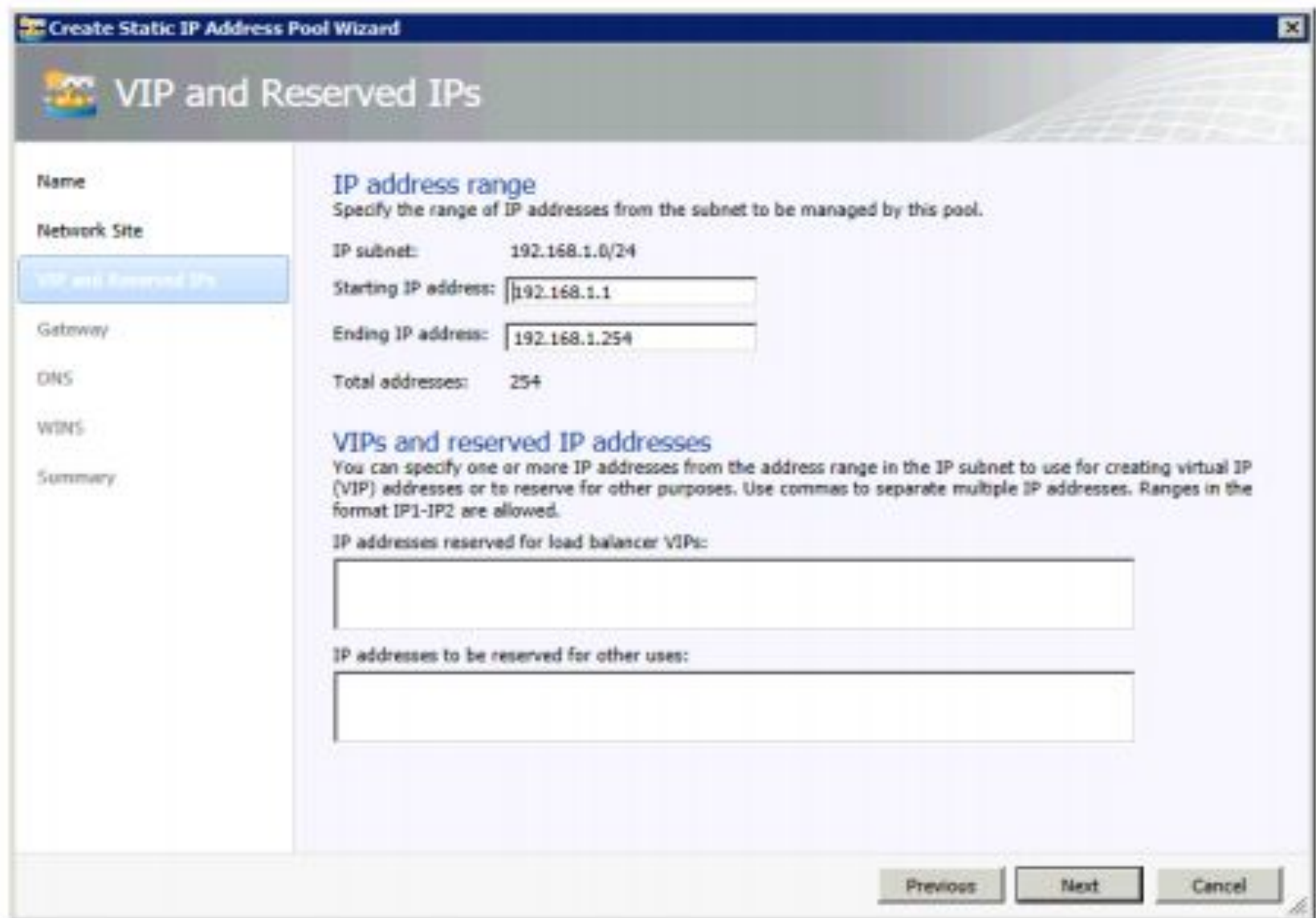


FIGURE 1-26 The Network Site pane of the logical network Properties sheet.

Определение статических IP-пулов



The screenshot shows the 'Create Static IP Address Pool Wizard' window. The title bar reads 'Create Static IP Address Pool Wizard'. The main heading is 'VIP and Reserved IPs'. On the left, a navigation pane lists steps: Name, Network Site, VIP and Reserved IPs (selected), Gateway, DNS, WINS, and Summary. The main area is titled 'IP address range' and contains the following information:

- Specify the range of IP addresses from the subnet to be managed by this pool.
- IP subnet: 192.168.1.0/24
- Starting IP address:
- Ending IP address:
- Total addresses: 254

Below this, the section 'VIPs and reserved IP addresses' provides instructions: 'You can specify one or more IP addresses from the address range in the IP subnet to use for creating virtual IP (VIP) addresses or to reserve for other purposes. Use commas to separate multiple IP addresses. Ranges in the format IP1-IP2 are allowed.'

There are two text input fields for specifying reserved addresses:

- IP addresses reserved for load balancer VIPs:
- IP addresses to be reserved for other uses:

At the bottom right, there are three buttons: 'Previous', 'Next', and 'Cancel'.

FIGURE 1-27 The Create Static IP Address Pool Wizard in VMM.

