

Video Surveillance System, Access Control and Guards Location/Patrol

V 1

Department: HR&GA
Reporter: Vyacheslav Ulanov

Haval Motor Manufacturing Russia
Date: 2018/05/23

Content

1

Video

2

GuardPosts Video

3

Access Control

4

GuardLocation/Patrol

5

Decision of General Director

1. Video Surveillance System

Basic principles.

Video Surveillance System is observing all perimeter of the plant, all places of an entrance, exit, entrance and departure of on a territory of the plant.

Video Surveillance System will have a possibility of increase in number of cameras.

Video Surveillance System will have a possibility of autonomous work in the absence of electricity.

Video Surveillance System will have a possibility of remote viewing and management.

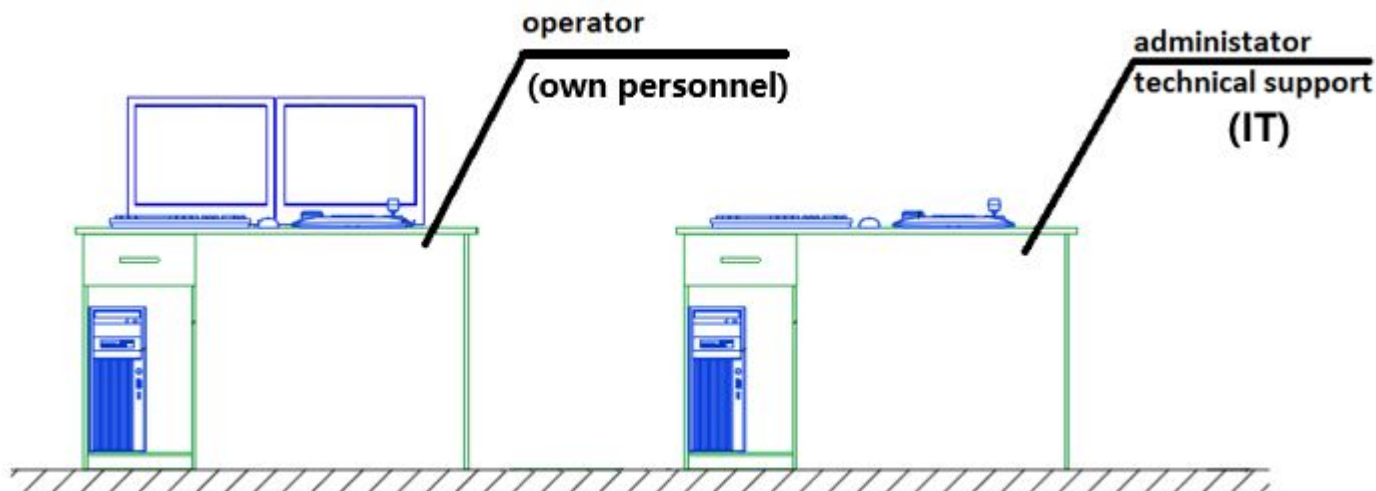
1.1. Workplaces for operators VSS

Workplaces of operators and administrator/technical support (IT)

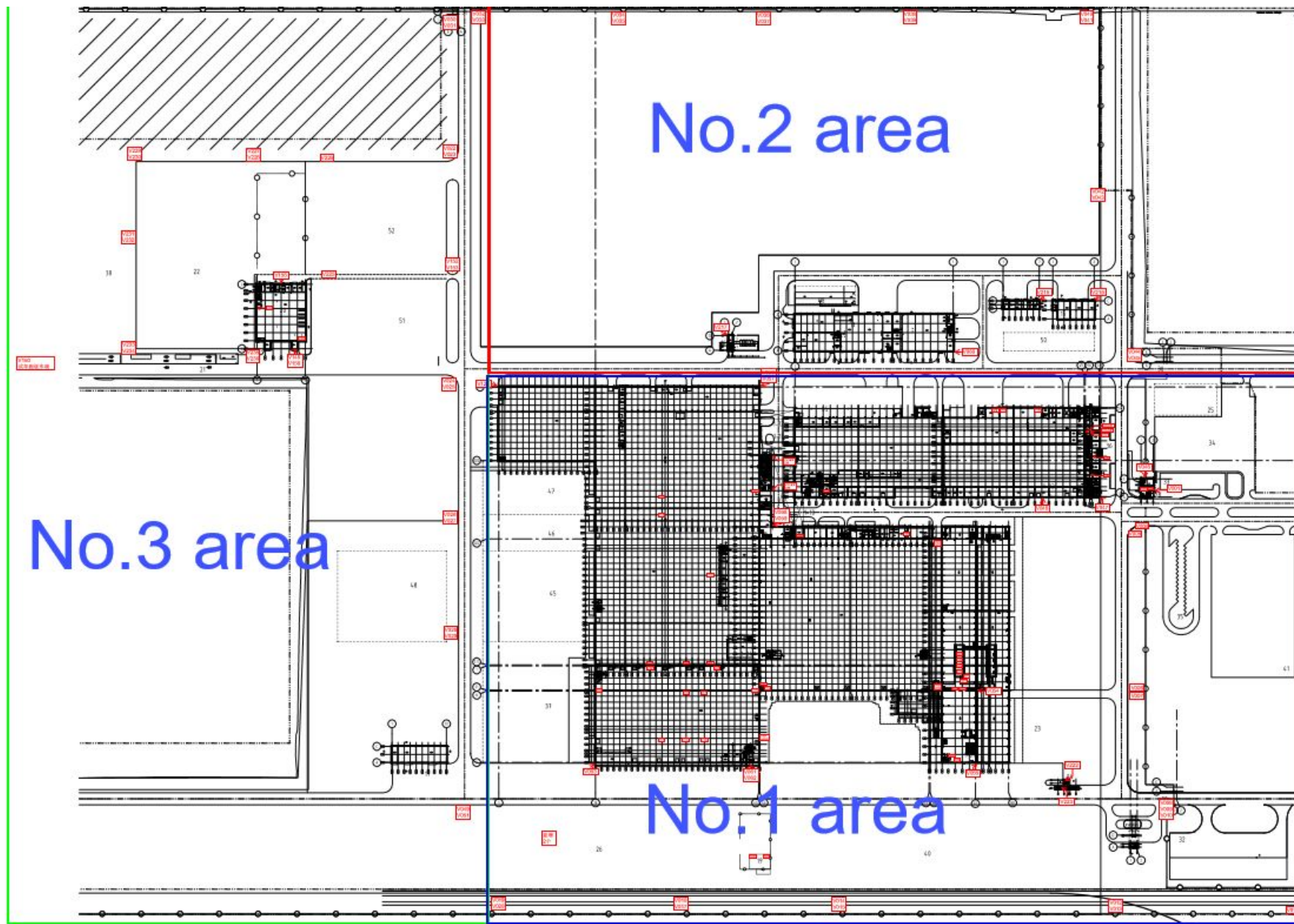
2 own employees of Security (1 employee will work 12 hours on day, to change according to the schedule.

1	2	3	4	5	6	7	8	65	66	67	68	69	70	71	72
9	10	11	12	13	14	15	16	73	74	75	76	77	78	79	80
17	18	19	20	21	22	23	24	81	82	83	84	85	86	87	88
25	26	27	28	29	30	31	32	89	90	91	92	93	94	95	96
33	34	35	36	37	38	39	40	97	98	99	100	101	102	103	104
41	42	43	44	45	46	47	48	105	106	107	108	109	110	111	112
49	50	51	52	53	54	55	56	113	114	115	116	117	118	119	120
57	58	59	60	61	62	63	64	121	122	123	124	125	126	127	128

Arrival of the administrator of technical support on a request or for carrying out scheduled monthly works.



1.2. All areas of cameras



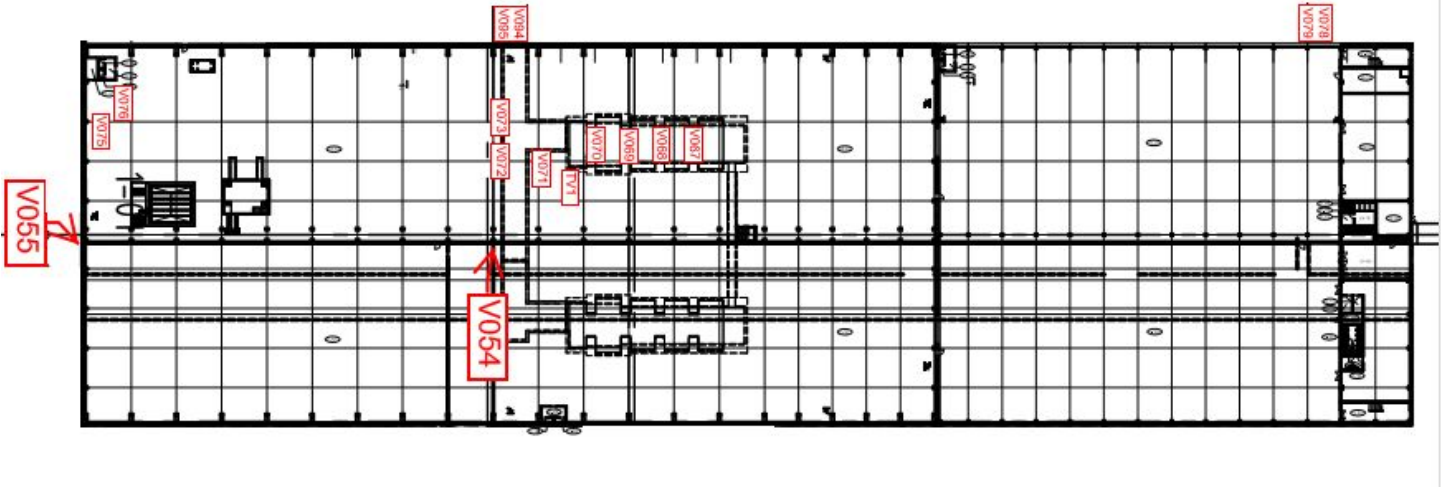
1.3. Areas of cameras

Production area

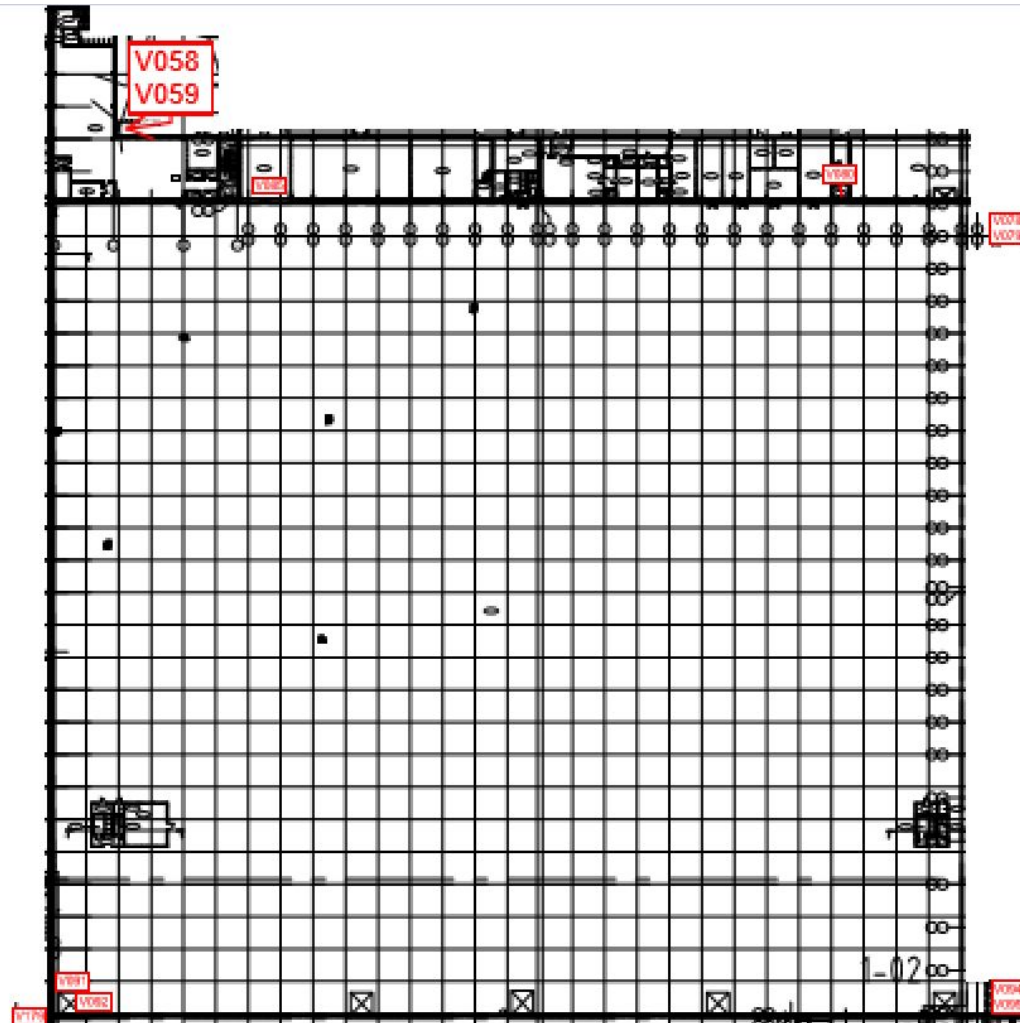


1.4. Cameras

StampingWorkShop 1-01

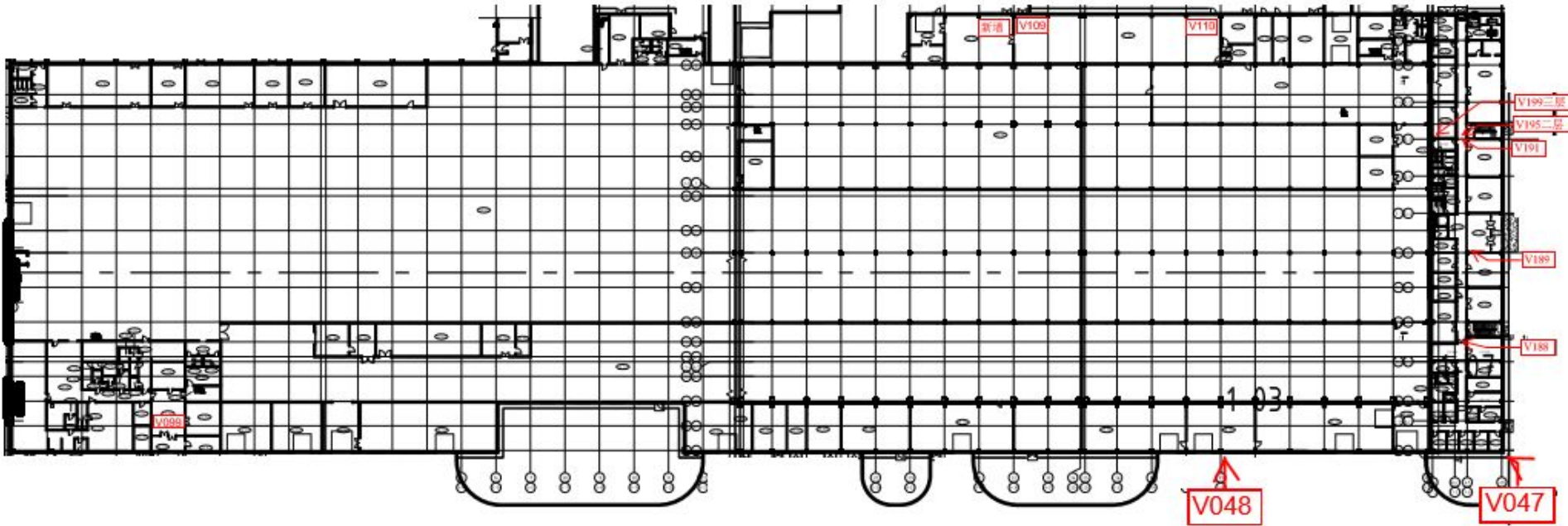


WeldingWorkShop 1-02

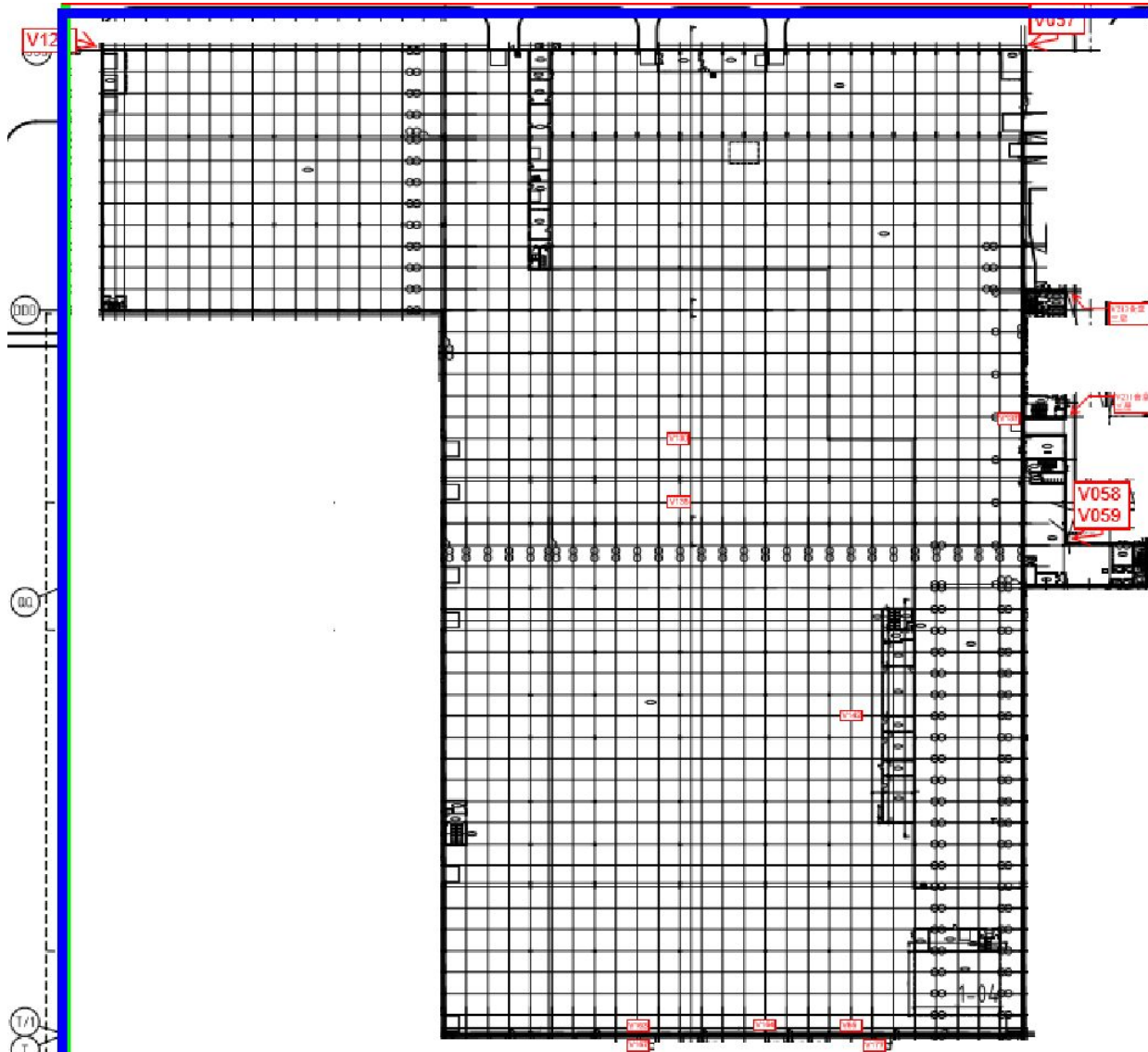


1.6. Cameras

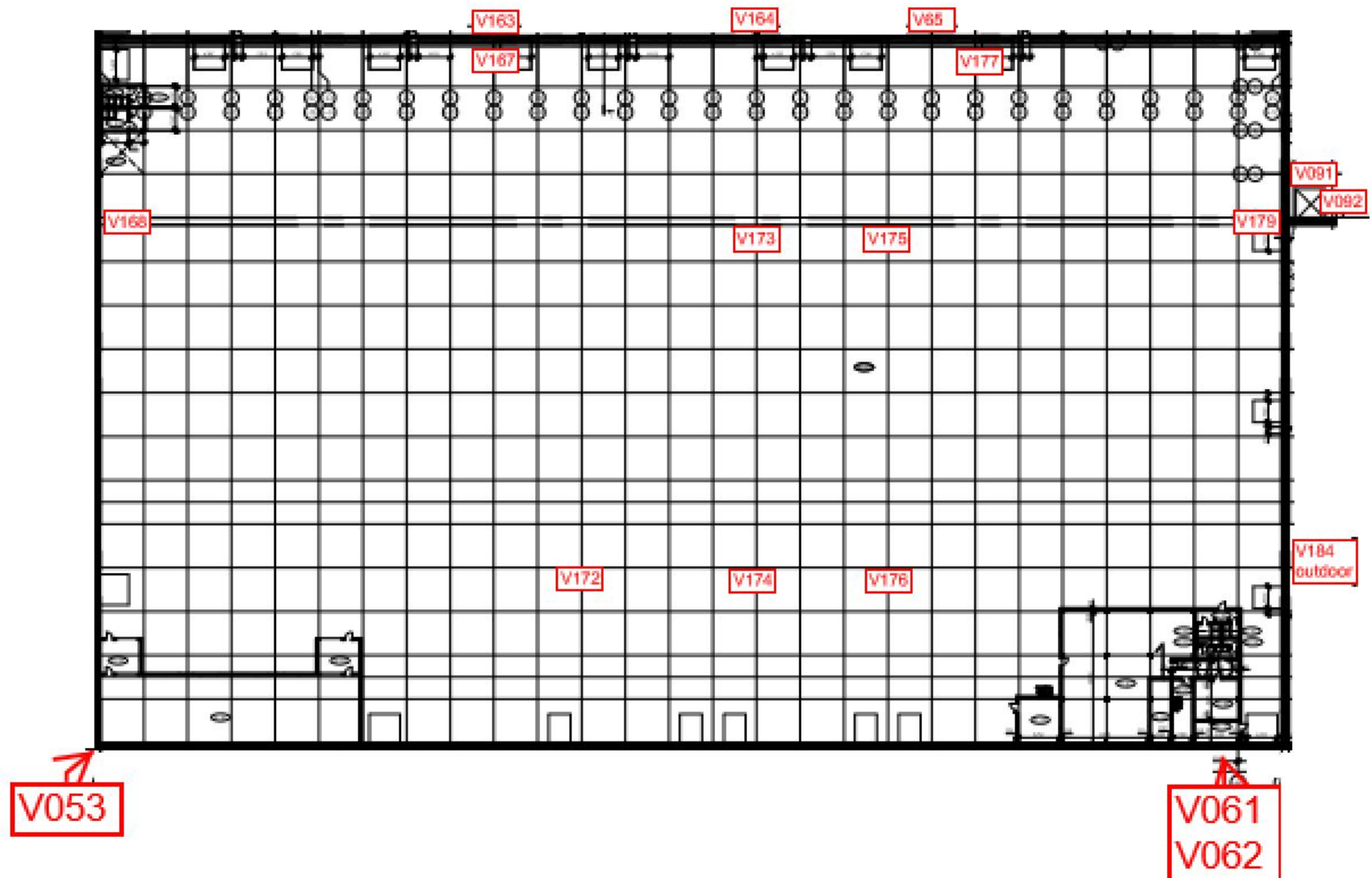
PaintingWorkShop/Office 1-03



AssemblyWorkShop 1-04



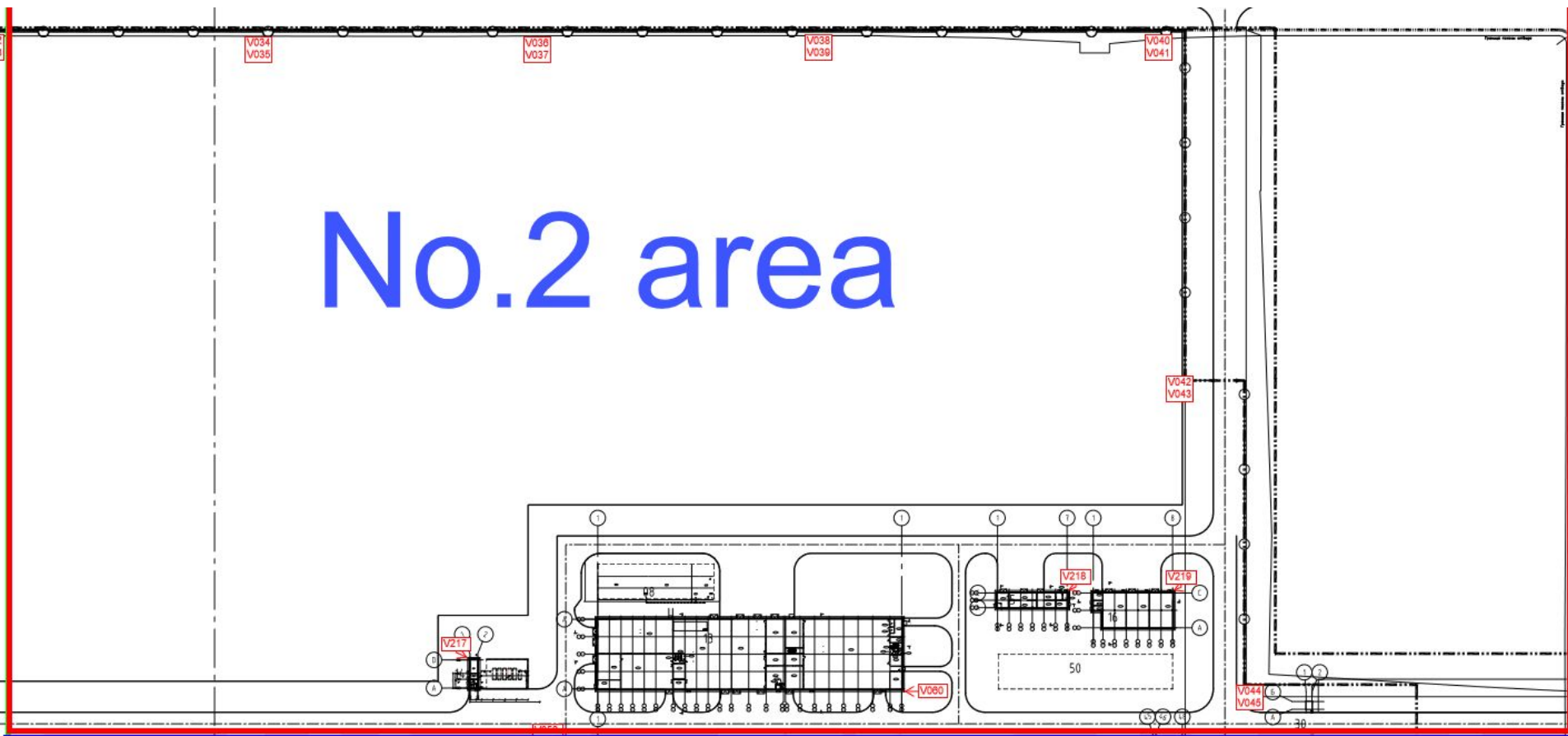
Warehouse 1-06



1.9. Areas of cameras

Power unit, Storage location of Fuel and Lubricants, Paint and Varnish, Hazardous waste

No.2 area



1.10. Areas of cameras

The platform of ready cars before testing.

Platform of loading of car carriers/trucks.

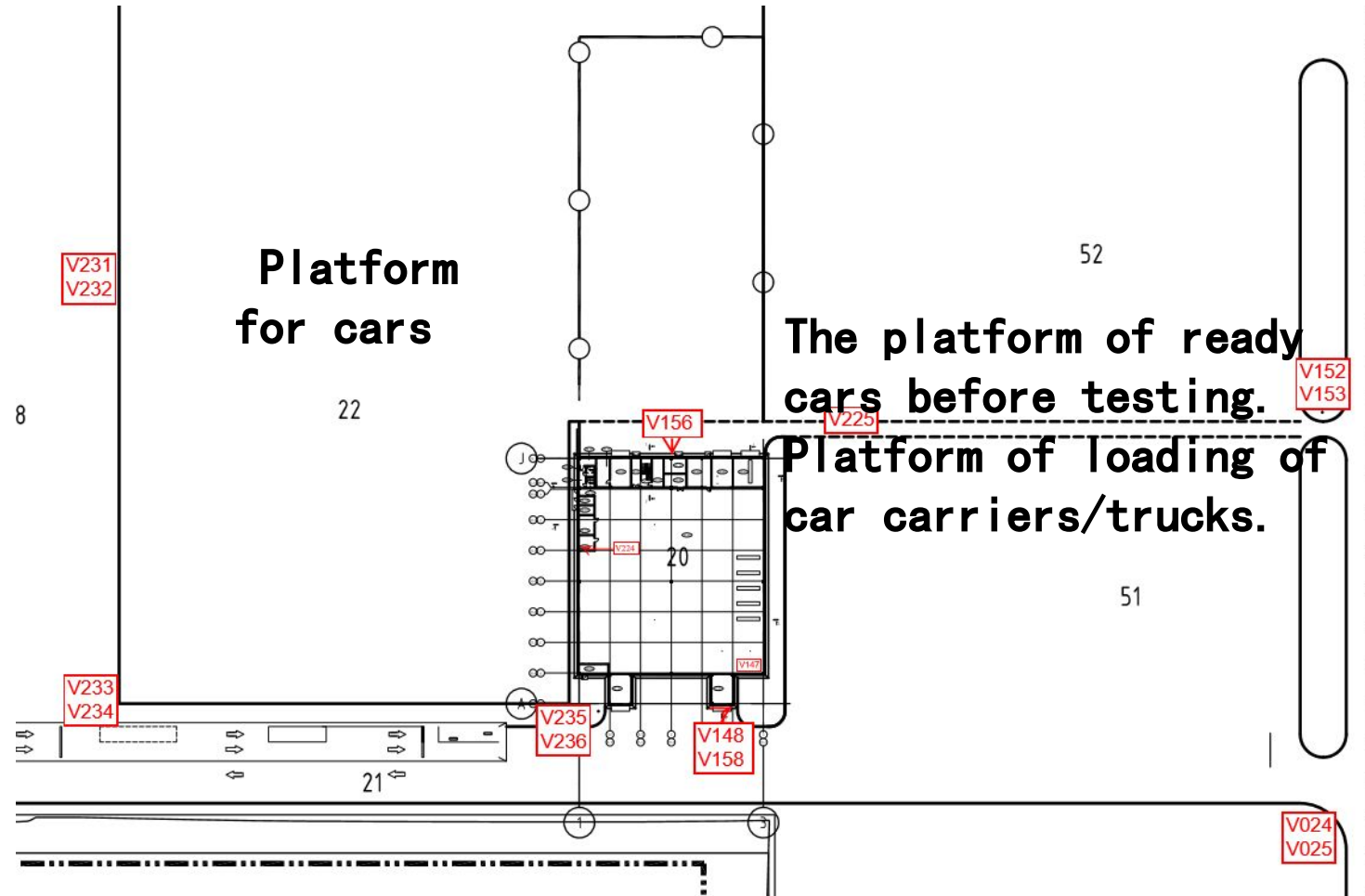
No.3 area



The diagram is a detailed floor plan of a facility, likely a testing or assembly area. It features several distinct zones: a large open area at the top left, a central area with a grid of equipment, and a hatched area on the right. Numerous red rectangular markers are placed throughout the plan, indicating the locations of cameras. The text 'No.3 area' is prominently displayed in blue in the upper left quadrant. The plan also shows various lines representing walls, doors, and equipment layouts.

1.11. Platform for cars (production)

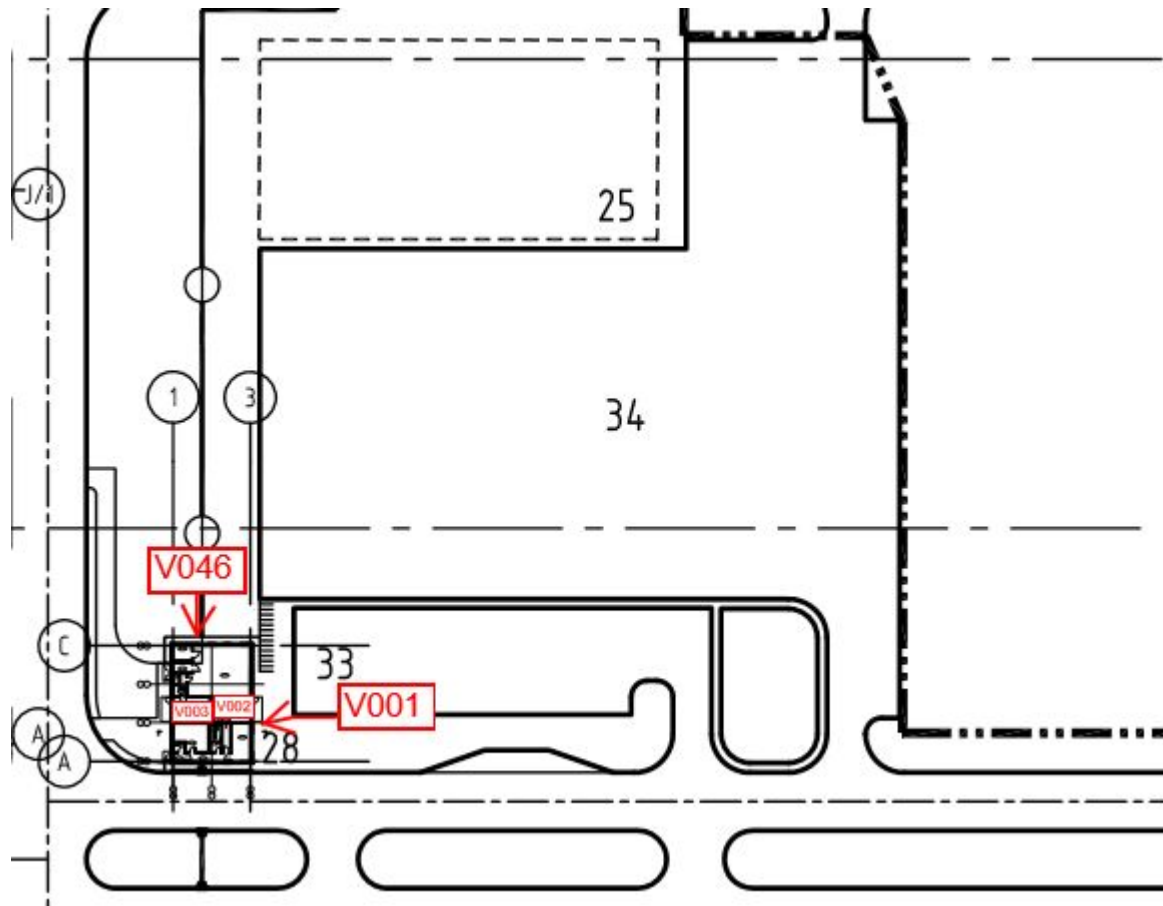
Place of control ready production (cars) and Logistic office.



2.1. GuardPost#1

Central checkpoint of the plant.

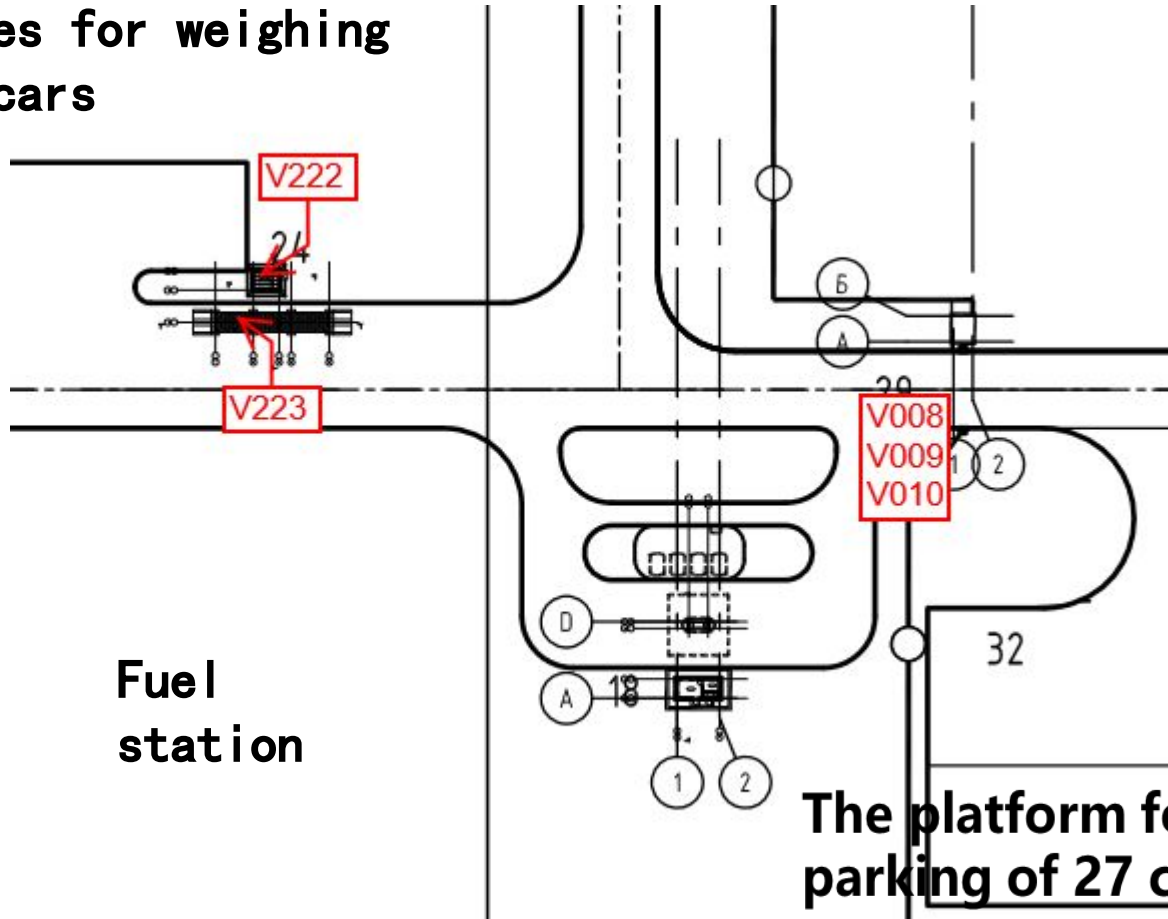
Control of traffic of
Control of the arriving and
decreasing personnel and visitors.
If necessary - check of personnel.



2.2. GuardPost#2

Transfer of cargo vehicles with freight (supply of raw materials).

Scales for weighing of cars



Fuel station

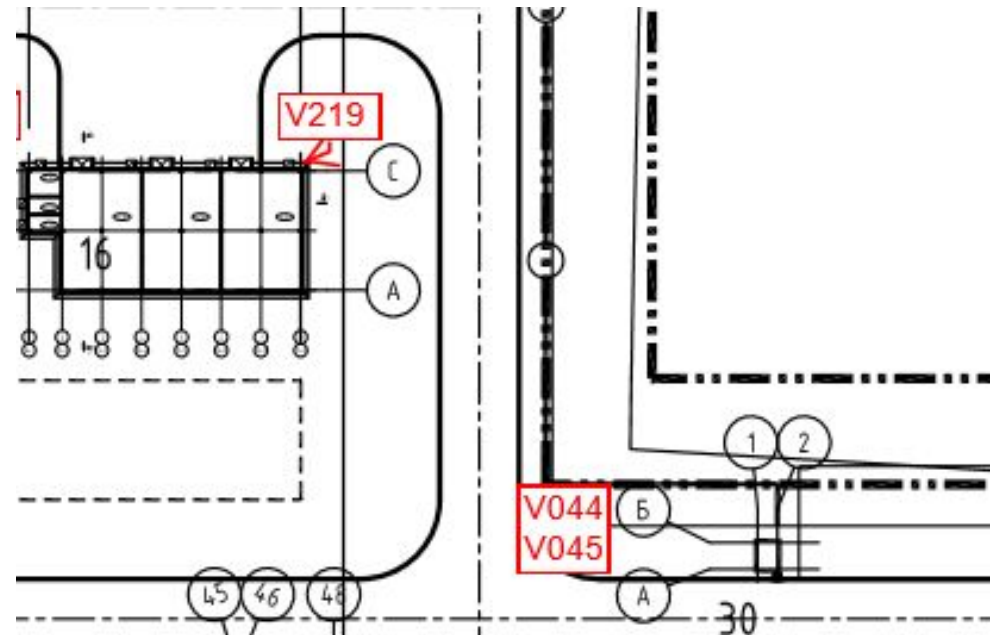
The platform for the temporary parking of 27 cargo vehicles

2.3. GuardPost#3

Transfer of cargo vehicles with freight (supply of chemicals).

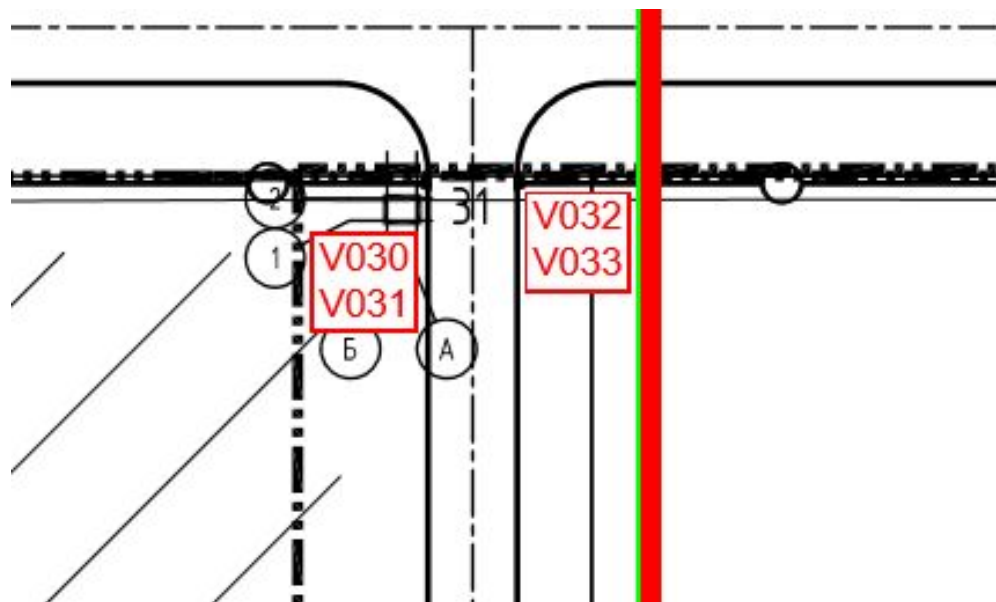
Control of traffic of vehicles.

Storage location of Fuel and Lubricants, Paint and Varnish.



2.4. GuardPost#4

Control of traffic of
vehicles.



Transfer of car
carriers/trucks.

2.5. Summary of cameras

Summary of CCTV of Plant

Summary of cameras installed indoor or on the wall of the buildings

buildings No.	outdoor fixed box camera	outdoor speed dome camera	dome camera	indoor fixed box camera	indoor fixed shockproof camera	indoor fixed anti-explosion camera	outdoor fixed anti-explosion camera	indoor camera subtotal	outdoor camera subtotal	subtotal	piles
1-01	1	1		2	7			9	2	11	
1-02			1	7				8	0	8	
1-03	1		1			3		4	1	5	
1-04	1	2		7				7	3	10	
1-06	3	1		9				9	4	13	
1-07		1	5					5	1	6	
1-09	2		2					2	2	4	
13		1						0	1	1	
14							1	1	0	1	
15	1							0	1	1	
16							1	1	0	1	
19				2				2	0	2	
20	1	2		2				2	3	5	
24	1		1					1	1	2	1
28	2		2					2	2	4	
subtotal	13	8	12	29	7	3	2	53	21	74	1

Summary of cameras installed on outdoor piles (not include building No.24)

buildings No.	outdoor fixed box camera	outdoor speed dome camera	dome camera	indoor fixed box camera	indoor fixed shockproof camera	indoor fixed anti-explosion camera	outdoor fixed anti-explosion camera	indoor camera subtotal	outdoor camera subtotal	subtotal	piles
No. 1 Area	14	4								18	8
No. 2 Area	11	1								12	6
No. 3 Area	28	1								29	15
subtotal	53	6	0	0	0	0	0			59	29

Summary of all Kinds of cameras

	outdoor fixed box camera	outdoor speed dome camera	dome camera	indoor fixed box camera	indoor fixed shockproof camera	indoor fixed anti-explosion camera	outdoor fixed anti-explosion camera	No. of indoor cameras	No. of outdoor cameras	No. of all cameras	No. of piles
total	66	14	12	29	7	3	2	53	80	133	30

3.1. Access Control System

Basic principles.

Access Control System will control important places of arrival and departure of personnel and visitors.

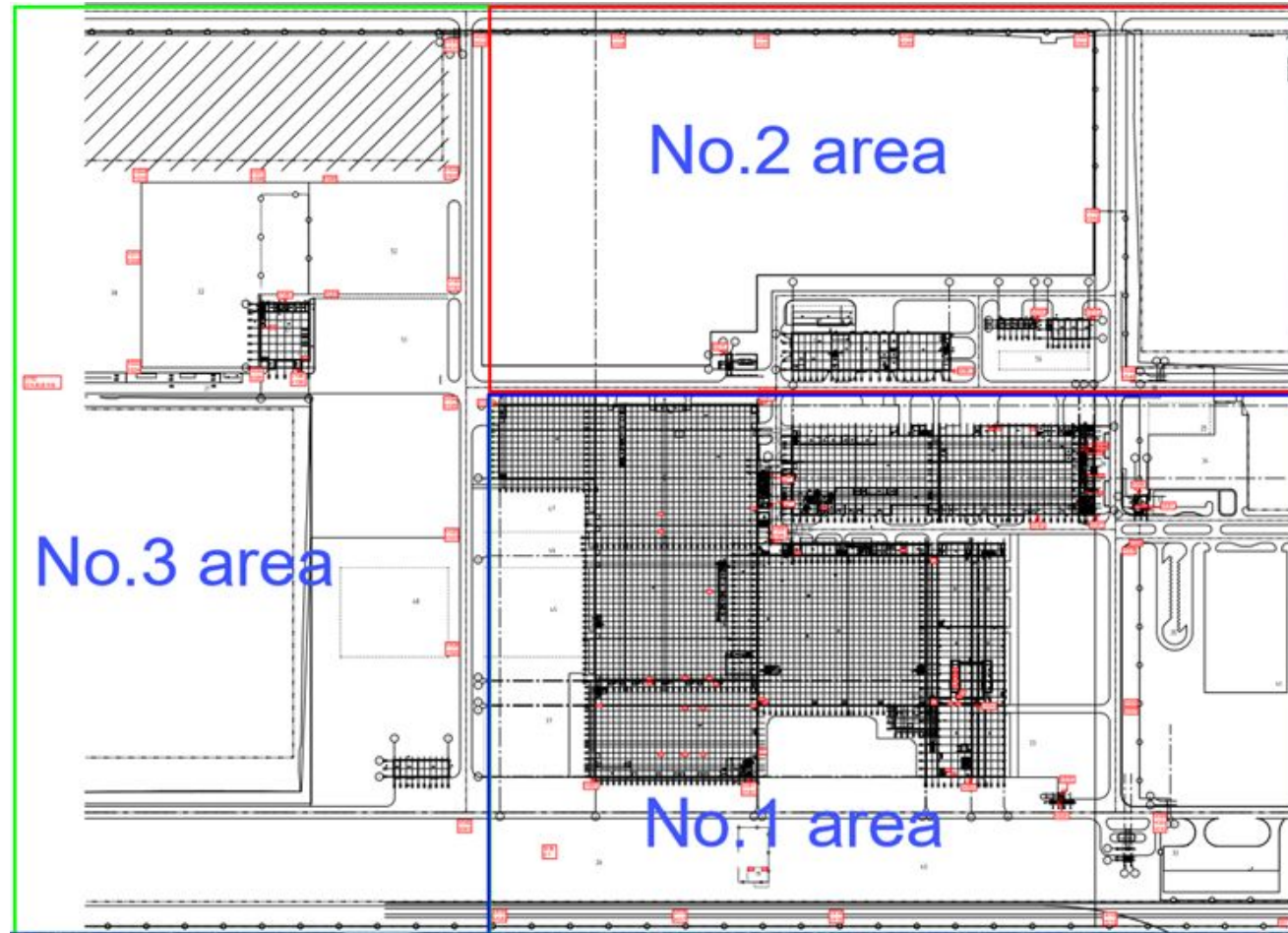
Access Control System will have a possibility of increase in number of control points.

Access Control System will have a possibility of autonomous work in the absence of electricity.

Access Control System will have a possibility of remote viewing of data and management.

3.2. Access Control System

WorkShop	Number of card readers / control points
1-01	1
1-02	3
1-03	1
1-04	1
1-06	4
1-07	3
1-09	4
13	1
20	1
28	12
Total	31



6 turnstiles at the central check point.

Total quantity of control points including 6 turnstiles - 31.

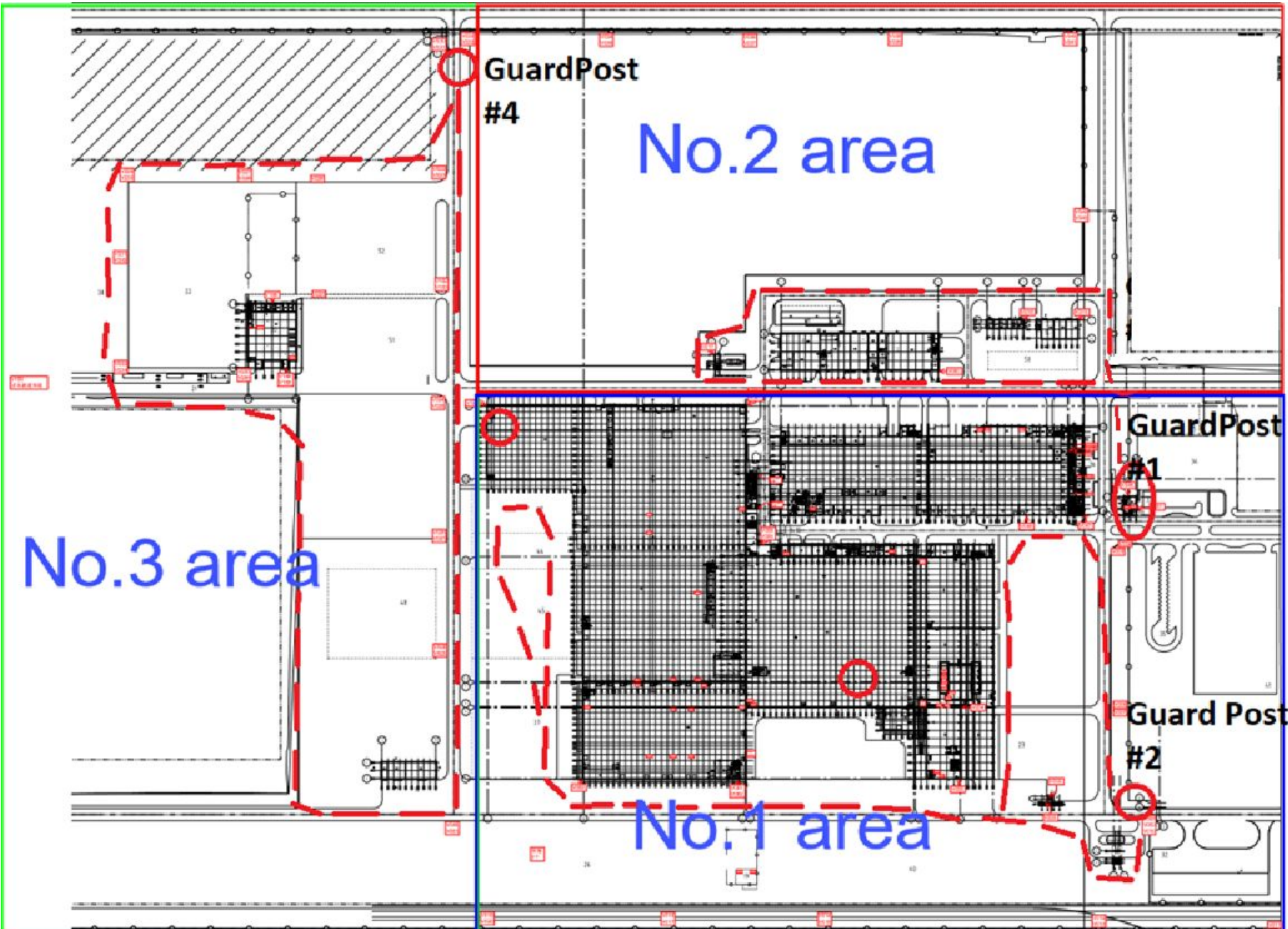
4.1. Guards Location/Patrol

Basic principles.

Guards will control and patrol important places of arrival and departure of personnel and visitors, storage locations of goods, materials, cars, trucks, spare parts (including night time, weekend and holidays).

Guards will react without delay to all incidents, if necessary without delay to inform responsibly person on incidents, will help to resolve the arisen incidents 24/7/365.

4.2. Guards Location/Patrol



4.3. Access Control System

Number of security guards:

GuardPost#1 - 4 (24 H)

(issue of Admittance cards, Senior Guard of daily change).

GuardPost#2 - 2 observation and control, patrol (24 H).

GuardPost#4 - 2 observation and control, patrol (24 H).

**2 guards for the video surveillance control and observation
(12 H).**

Total

10

5. Decision of General Director

Approve

Don`t approve