

*Welcome to the world
of images*

People: *their character and appearance*



Appearance



face

hair

features

complexio
n

figure

eyes

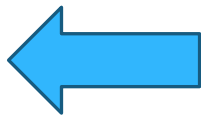
nose



Appearance



- ✓ Straight
- ✓ Curly
- ✓ Wavy
- ✓ Abundant
- ✓ Thick
- ✓ Long
- ✓ Smooth
- ✓ Silky



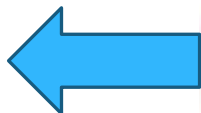
- ✓ Blond
- ✓ Dark
- ✓ Fair
- ✓ Golden
- ✓ Red
- ✓ Reddish
- ✓ Grizzled
- ✓ Braids/plaits

- ✓ Short
- ✓ Long
- ✓ Straight
- ✓ Turned-up
- ✓ Pointed



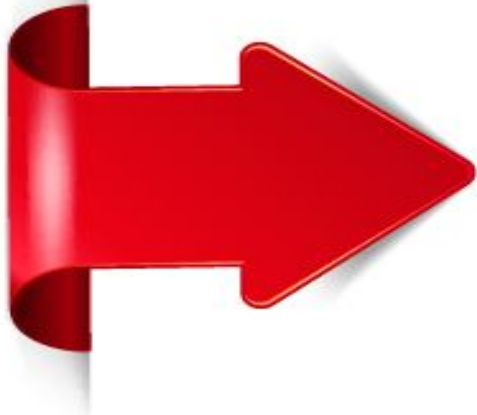
- ✓ Aquiline
- ✓ Snub
- ✓ Fleshy

- ✓ Kind
- ✓ Warm
- ✓ Steel-grey
- ✓ Close-set
- ✓ Cross-eyed



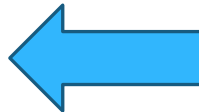
- ✓ Blue (blue-eyed)
- ✓ Brown
- ✓ Grey
- ✓ Dark

Appearance



- ✓ Full
- ✓ Thick
- ✓ Thin
- ✓ Parted
- ✓ Rosy
- ✓ painted

- ✓ Fat
- ✓ Plump
- ✓ Stout
- ✓ Well-fed
- ✓ bulky



- ✓ Slim
- ✓ Slender
- ✓ Skinny
- ✓ Thin
- ✓ Neat
- ✓ Graceful

Character

Good qualities

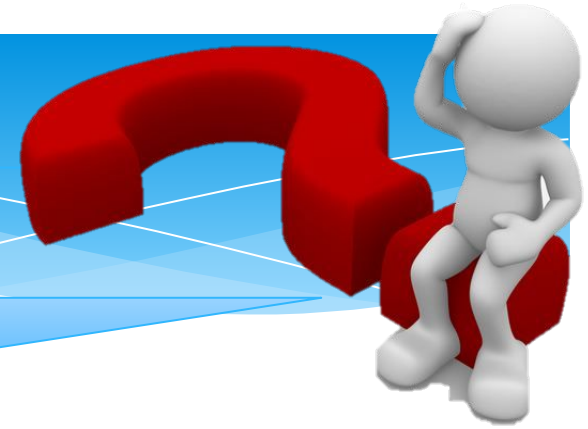
- considerate, well-mannered, caring, reliable, independent, patient, sociable, helpful...

Bad qualities

- Moody, ill-mannered, stubborn, unreliable, dishonest, spiteful, greedy...



Appearance



Complete the sentences

1. She never had long hair. She always wore her hair **close-cropped**.
2. I have always dreamed about such long **eyelashes**.
3. People who have no hair are **bald-headed**.
4. My friend is very **reliable**. I know I may trust him.
5. Her eyes are not brown. She is **green-eyed**.
6. He has got a straight nose but it's a bit **pointed**.
7. I never heard her swearing. She is really **well-mannered**.
8. She has long hair. I admire what **abundant** hair she had.

**green-eyed, well-mannered, close-cropped,
bald-headed, abundant, pointed, reliable**

Description of people



Hair

Face

Complexion

Eyes

Mouth and lips

Figure

Other details



Describe a suspect to the police

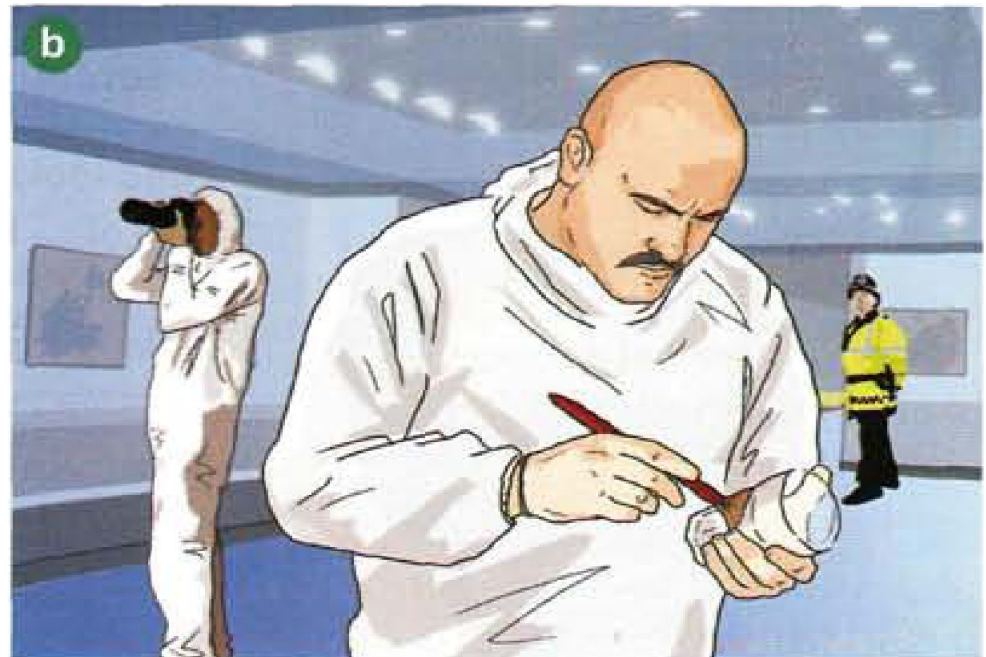


Describe a suspect to the police



- What has happened?
- Why is the policeman running to the building?

- What are the people in the picture doing?
- What is the man with the moustache looking for?



Describe a suspect to the police



- Why is the policeman talking to the young woman?
- What do you think she is telling him?

- Who is the man with the policeman?
- What did the policeman do?



Description of people



Hair

Face

Complexion


Eyes

Mouth and lips

Figure

Other details



A 3D rendered white figure stands behind a red clipboard. The figure's right hand is at the top of the clipboard, and its left hand holds a large, red, glossy pen. The pen has silver-colored accents at the top and bottom. The clipboard has a silver clip at the top and contains several sheets of white paper. The text is written in a black, italicized serif font on the top sheet of paper.

*We shouldn't
judge people by
first impression*

Appearance



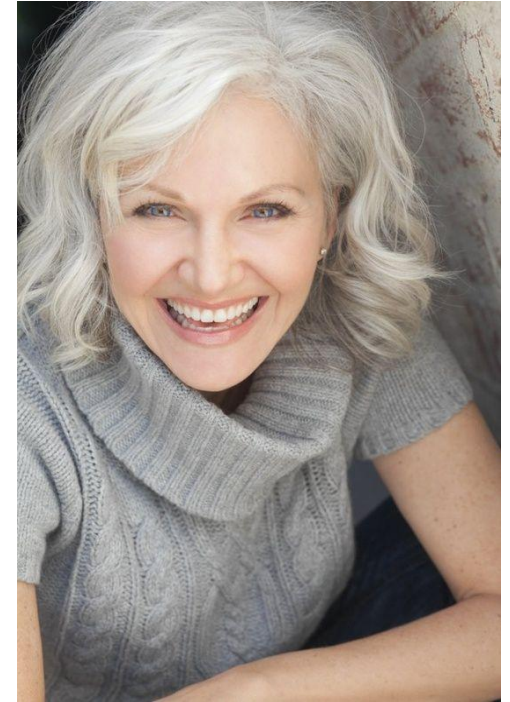
1



2



3



Appearance



A



B



C

