



# **Wifi Kit Instruction**

**Power Leader Video Technology Co., Ltd.**

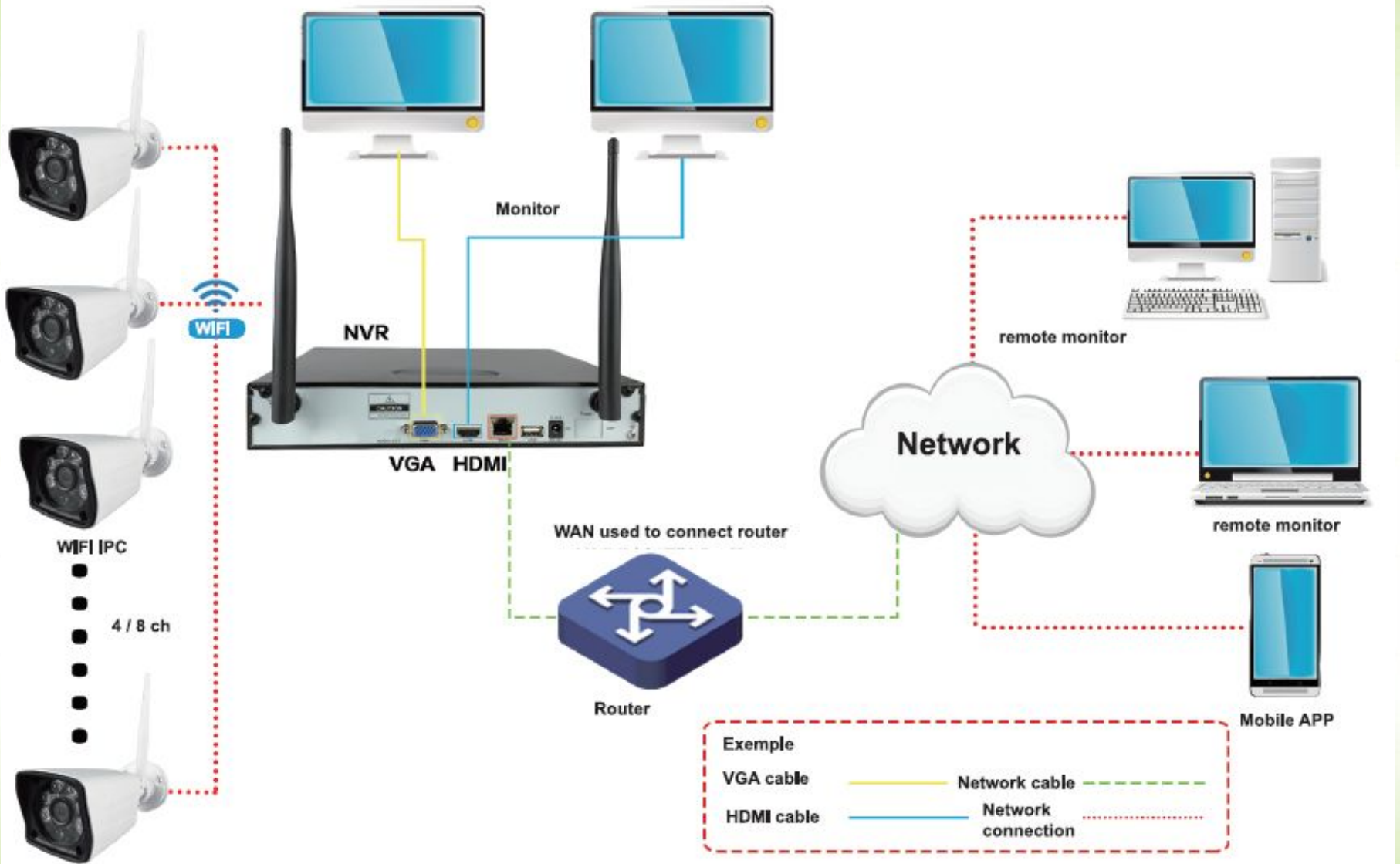


# Agenda

- [Wifi Kit Connection Diagram](#)
- [Get Device Cloud ID](#)
- [Download APP IP PRO](#)
- [Add Device to APP](#)
- [NVR E-mail Setting](#)

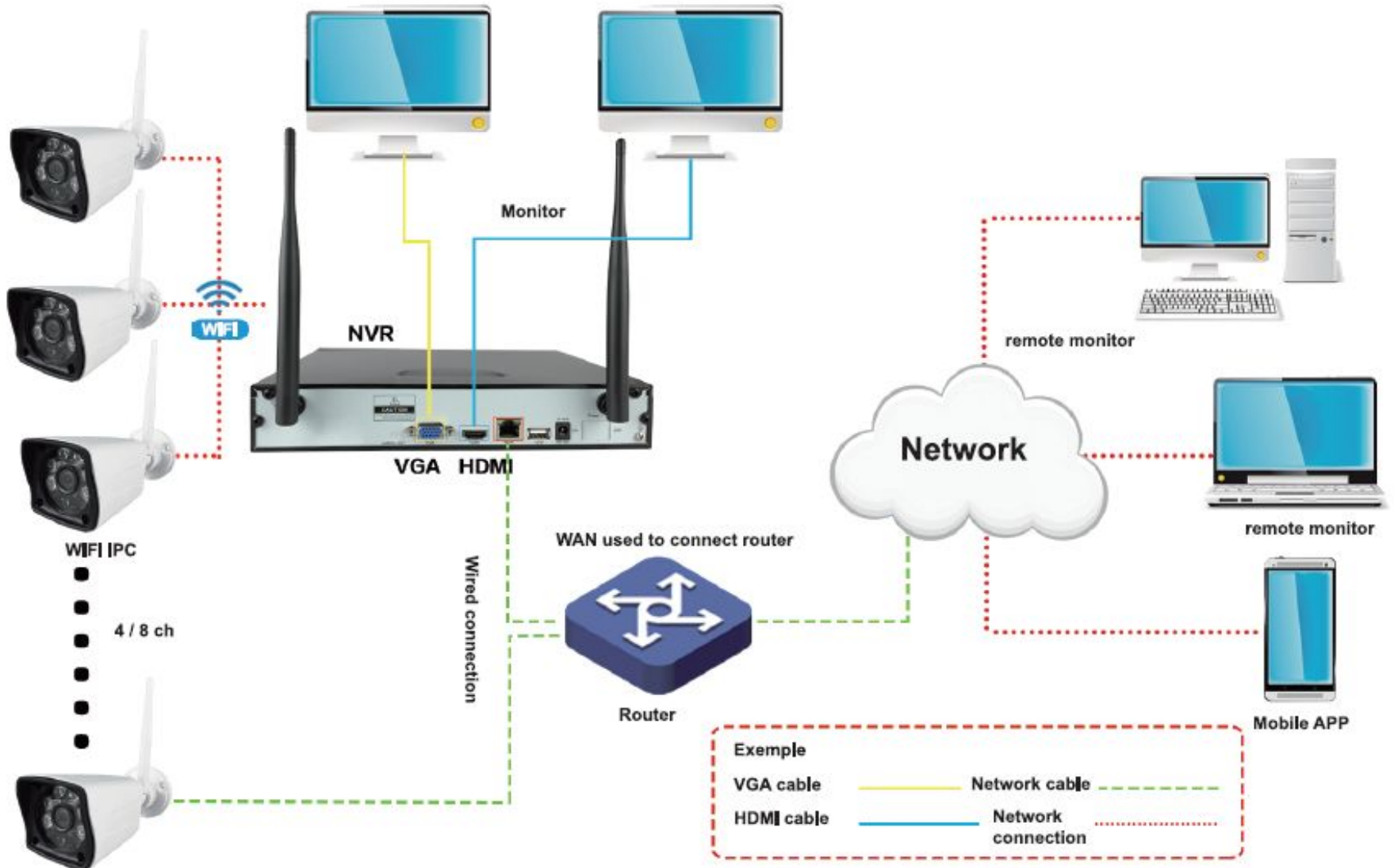


# Wifi Kit Connection by Wifi





# Wifi Kit Connection by Wifi and Cable



The screenshot shows the 'Network setup' menu of an NVR. The 'Cloud ID' field is highlighted with a red box and a red arrow pointing to it. The status is '(OFFLINE)'. A 'Show QR Code' button is visible next to the Cloud ID. The network status at the bottom indicates 'Network Cable Disconnect'.

Setting	Value
Cloud ID	440706114 (OFFLINE)
IP address	192.168.1.188
Subnet mask	255.255.255.0
Gateway	192.168.1.1
MAC address	0005-FE0C-8131
Preferred DNS	8.8.4.4
Web port	80
Net Diagnose Info	<input checked="" type="checkbox"/> Enable
Network Status	Network Cable Disconnect

Go to the NVR setting menu – Network Setup to get Cloud ID. Beside the Cloud ID, “Online” mean NVR is connected to internet, can be remote accessed. Otherwise please check the network connection and setting.



iPhone APP



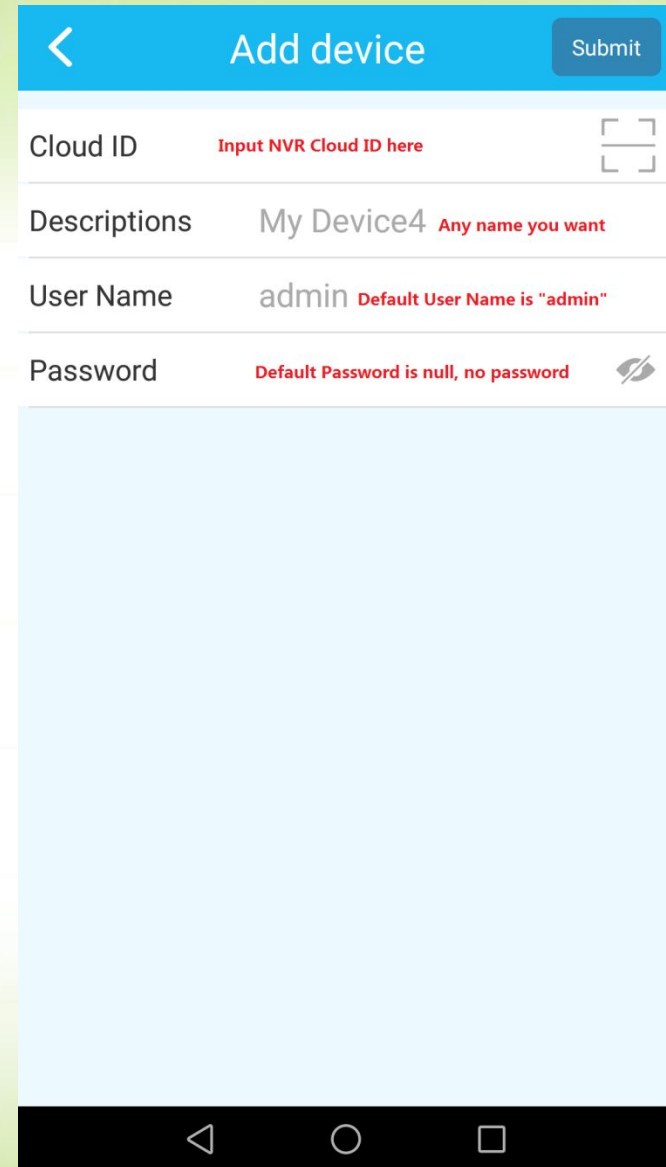
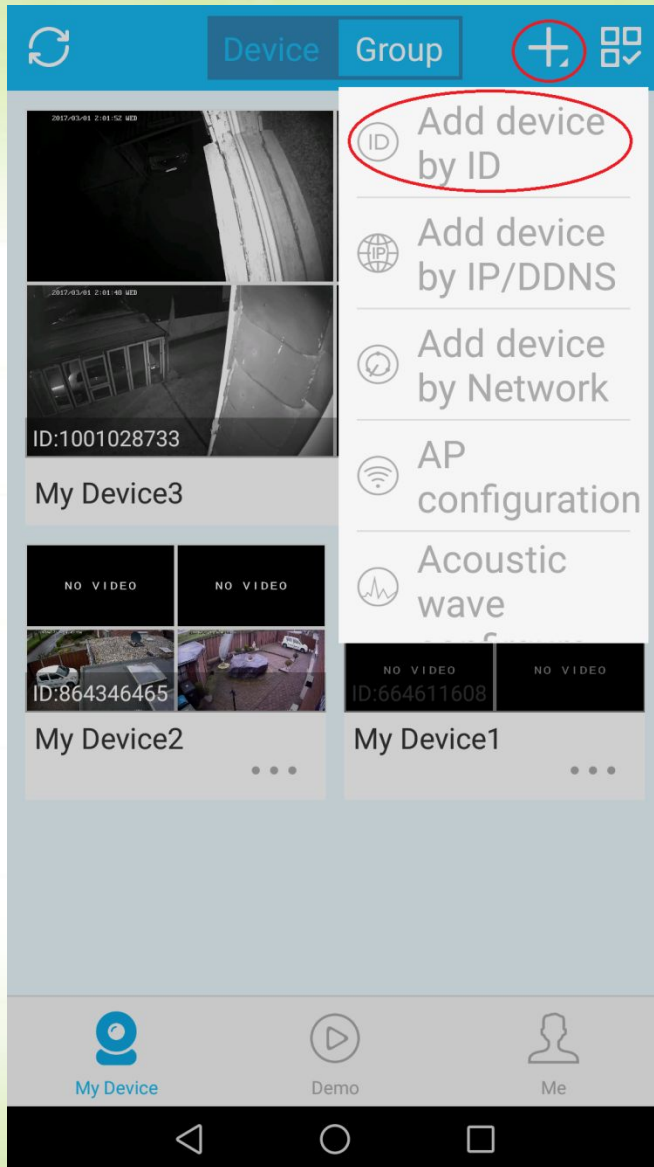
Google play APP



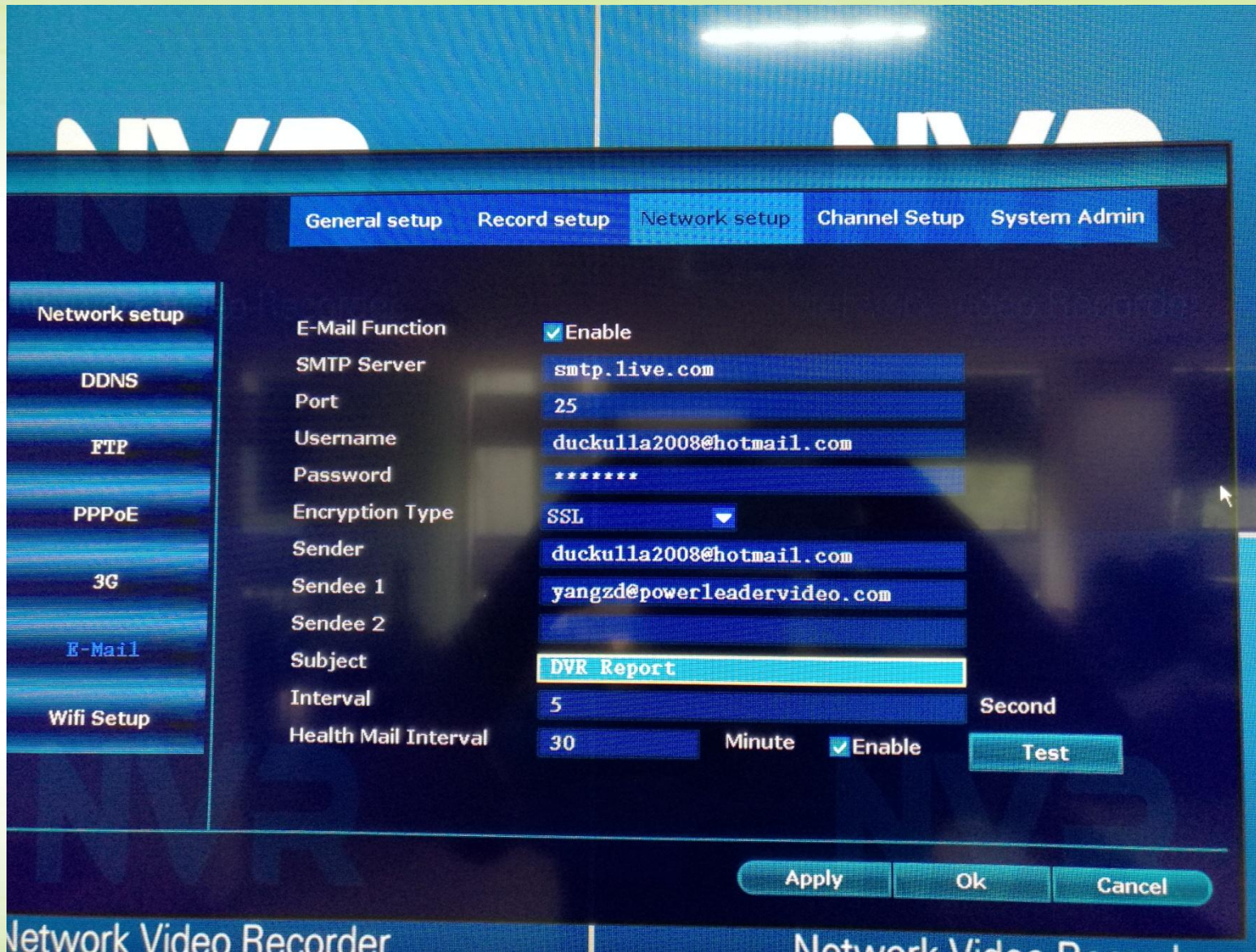
APP download



# Add Device to APP

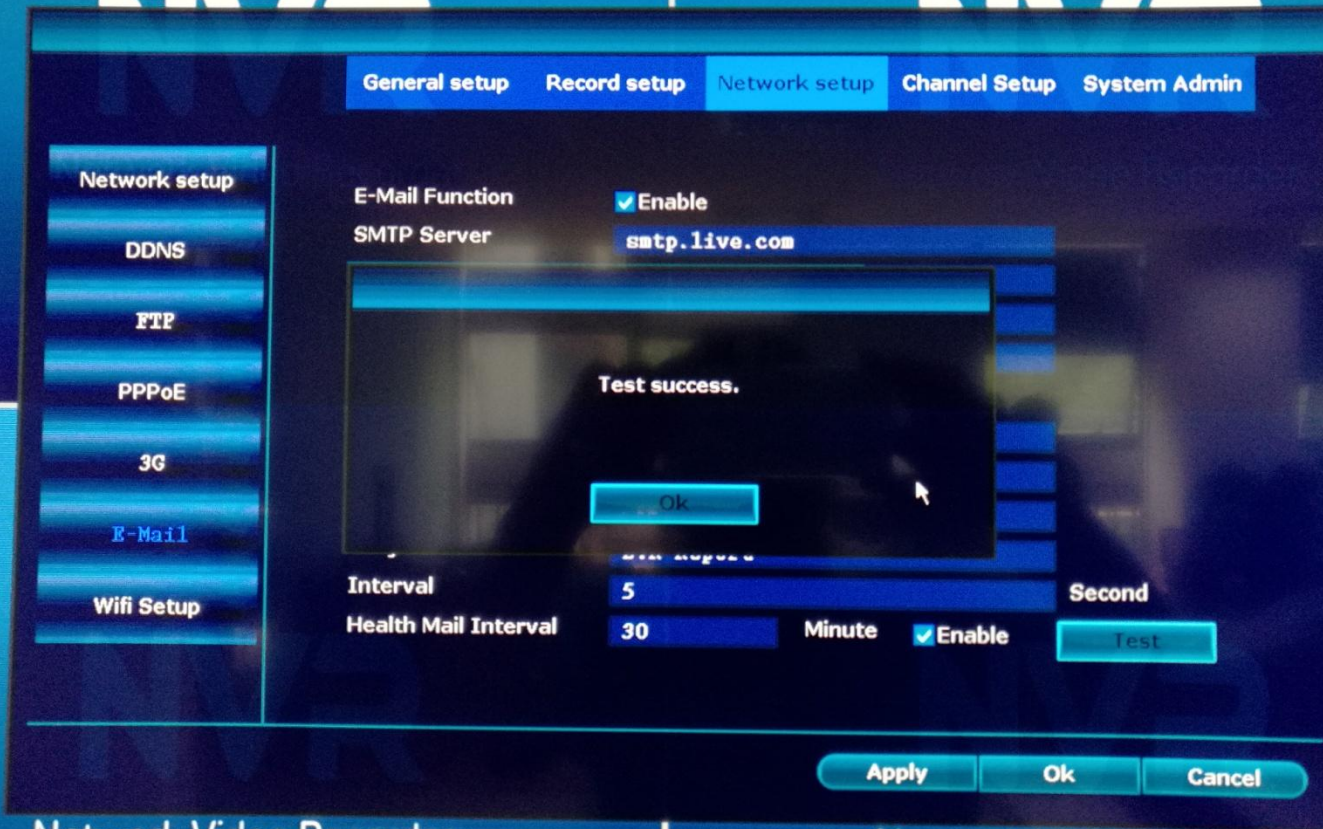


Go to NVR setting Menu  
-Network Setup  
-E-Mail,  
Input the correct E-mail parameters.  
And then click "Test" to verify the setting correct or not.





If all the information are correct, it will show "Test success".



Network Video Recorder

Network Video Recorder



**Thanks!**